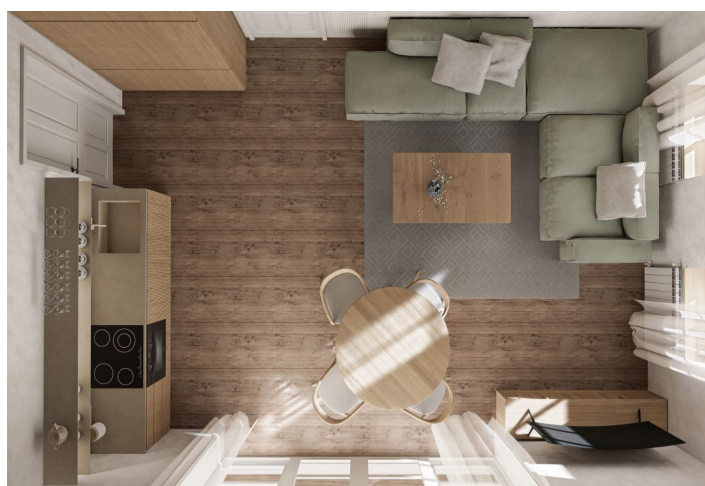




Apartment Two-bedroom (3+kk)

€ 485 383 | CZK 11 792 390

74.17 m², Jablonec nad Nisou, Bedřichov





Apartment Two-bedroom (3+kk)

€ 485 383 | CZK 11 792 390

74.17 m², Jablonec nad Nisou, Bedřichov

Total area	85 m²
Floor area*	74 m²
Terrace	11 m²
Garden	144 m²
Parking	1 outdoor parking space
Cellar	-
PENB	B
Reference number	107733

This new accommodation unit with a large garden and parking space is being built in an energy-efficient new development designed in a traditional mountain style. The apartment complex is located in the popular resort of Bedřichov, just a few minutes' walk from a ski resort and approximately an hour's drive from the outskirts of Prague. Completion is scheduled for October 2025.

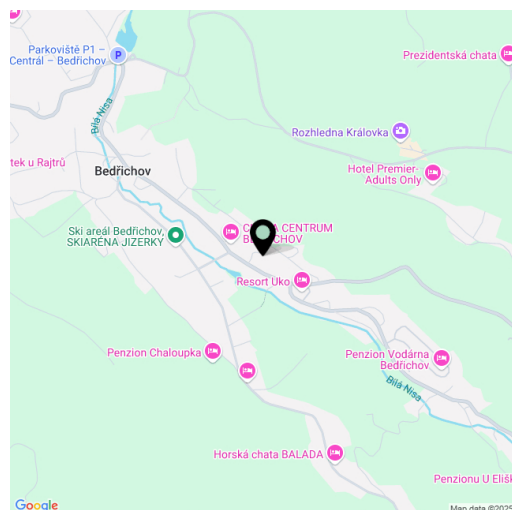
The ground-floor unit features a living room with a preparation for a kitchenette, a main bedroom with an en-suite bathroom, a second bedroom, a central bathroom, a utility room, and an entry hall. Both bathrooms feature a shower and toilet. The living room will have direct access to a **northeast-facing garden with a terrace**.

High-quality standard includes **wooden plank flooring**, wooden Euro windows with **triple glazing**, **wooden** interior doors, **Grohe** sanitary ware, a **Polysan** shower, a **recuperation unit**, a **heat pump** for hot water, and electric storage radiators. Security features include **magnetic sensors** with wiring to all windows and entrance doors. The chalet-style building will have a facade clad in **wood** and **natural stone**, while the terrace surface will be made of **Siberian larch**. The unit comes with **one outdoor parking space**. Shared facilities include a **ski storeroom** with electric boot dryers.

The location is easily accessible, situated by a **year-round maintained road**. A ski resort is within walking distance, and a cross-country skiing area is just 1 km away. Outside the winter season, the surrounding **natural landscape** offers numerous hiking and bike trails, as well as opportunities for **outdoor swimming**. Right from the doorstep, residents can set out for the **Královka lookout tower**, which features a restaurant and **large children's playground**. Full amenities are available in nearby Liberec, and the drive from Prague is convenient, primarily via a highway.

The unit will be officially classified as an accommodation unit.

Floor area 74.17 m², garden 143.55 m², terrace 10.5 m².



* Area of the unit according to the Civil Code. The area consists of the sum total area of the entire unit bounded by perimeter walls.



Apartment Two-bedroom (3+kk)

€ 485 383 | CZK 11 792 390

74.17 m², Jablonec nad Nisou, Bedřichov

CHALUPA BEDŘIŠKA

APARTMÁN D

2 NP

D.01.01	ZÁDVEŘÍ	9,10 m²
D.01.02	KOMORA	1,33 m²
D.01.03	KOUPELNA	3,08 m²
D.01.04	MÍSTNOST 1	12,66 m²
D.01.05	MÍSTNOST 2	27,19 m²
D.01.06	MÍSTNOST 3	12,65 m²
D.01.07	KOUPELNA	3,04 m²

UŽITNÁ PLOCHA

69,05 m²

CELKOVÁ PLOCHA BYTU*

74,17 m²

D.01.08 TERASA

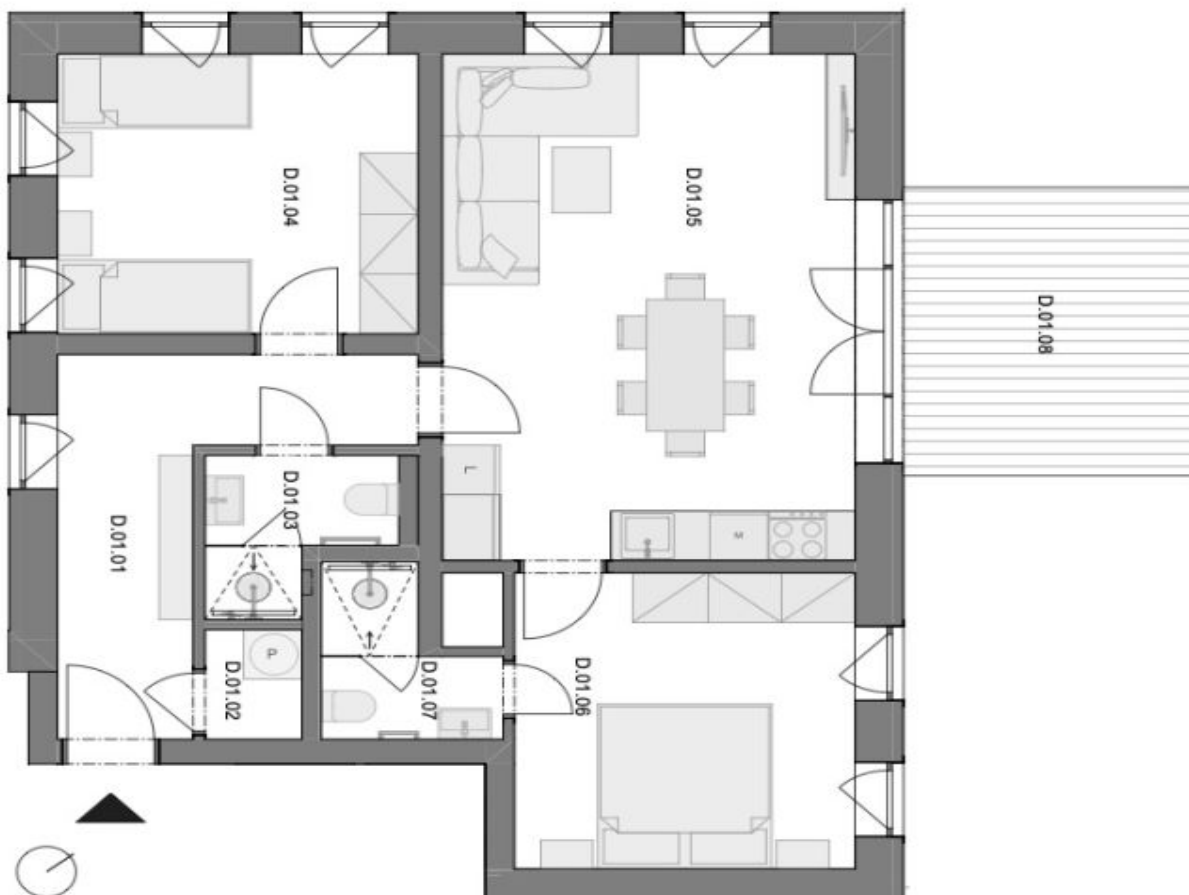
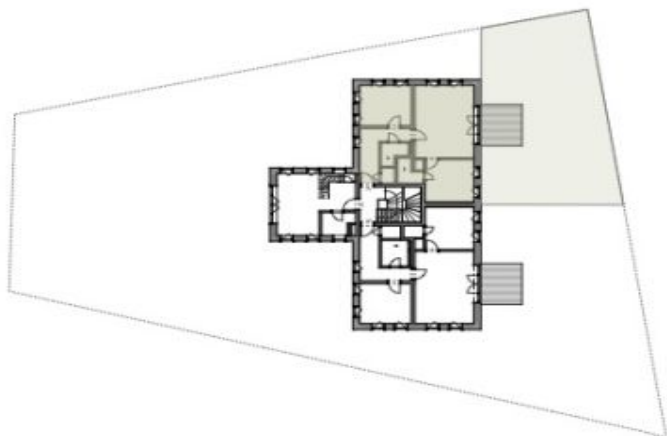
10,50 m²

ZAHRADA

143,55 m²

PARKOVACÍ STÁNÍ

1



- Vybavení nábytkem je pouze ilustrativní a není součástí jednotky.
* Celkovou plochu bytu tvoří půdorysná plocha všech místností bytu včetně plochy všech konstrukcí uvnitř bytu bez šachty