



## Apartment One-bedroom (2+kk)

€ 322 048 | CZK 7 824 150

53.27 m², Jablonec nad Nisou, Bedřichov



Chalupa  
Bedřiška





## Apartment One-bedroom (2+kk)

€ 322 048 | CZK 7 824 150

53.27 m<sup>2</sup>, Jablonec nad Nisou, Bedřichov

Total area	53 m <sup>2</sup>
Parking	1 outdoor parking space
Cellar	-
PENB	B
Reference number	107730

This new duplex accommodation unit with a parking space is being built in an energy-efficient new development designed in a traditional mountain style. The building, which will house seven units, will also feature a wellness area with a sauna. The apartment complex is located in the popular resort of Bedřichov, just a few minutes' walk from the ski slopes and approximately an hour's drive from the outskirts of Prague. Completion is scheduled for October 2025.

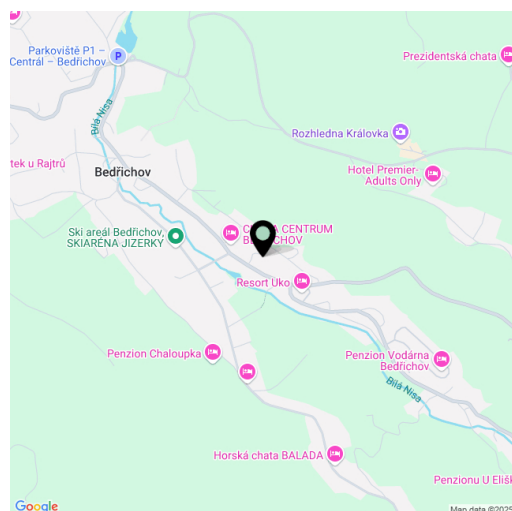
On the entrance level of the unit (1st floor), there will be a living room with a kitchen, a bathroom (shower, toilet), and an entrance hall. The attic will feature an open space for a bedroom (24 m<sup>2</sup>).

Facilities include **hardwood plank floors**, divided wooden Euro-windows with **triple glazing**, wooden interior doors, **Grohe** sanitary ware, a **Polysan shower enclosure**, a heat recovery unit, a heat pump for hot water, and electric storage radiators. The unit will be secured with **magnetic sensors** wired to all windows and the entrance door. The chalet's facade will be clad in **wood and natural stone**. The unit comes with one **outdoor parking space**. Shared facilities include a **ski storage room** with electric boot dryers.

The property is easily accessible, located by a **road maintained year-round**. A **ski resort** is within walking distance, and **cross-country skiing trails** are just 1 km away. Outside the winter season, **the surrounding beautiful nature** offers numerous hiking and bike trails, as well as opportunities for natural swimming. Directly from the building, you can set out for the **Královka lookout tower**, which features a restaurant and a **large children's playground**. All essential amenities are available in nearby Liberec, and the drive from Prague is convenient, mostly via a highway.

The unit will be officially classified as an accommodation unit.

Floor area: 53.27 m<sup>2</sup>.



\* Area of the unit according to the Civil Code. The area consists of the sum total area of the entire unit bounded by perimeter walls.





## Apartment One-bedroom (2+kk)

€ 322 048 | CZK 7 824 150

53.27 m<sup>2</sup>, Jablonec nad Nisou, Bedřichov

### CHALUPA BEDŘIŠKA

#### APARTMÁN C

#### 2. NP + PODKROVÍ

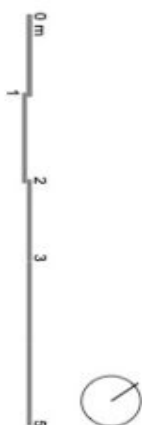
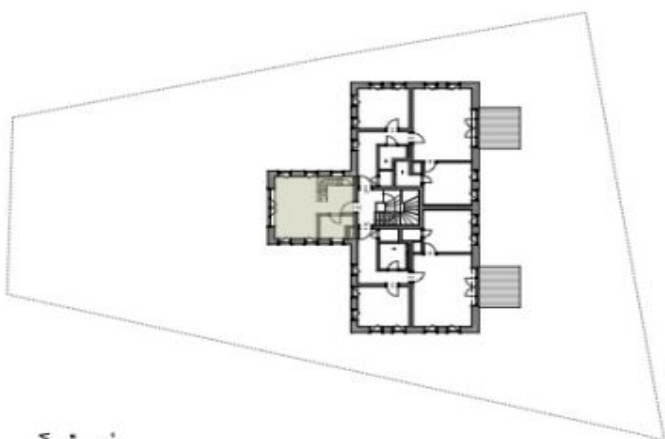
C.01.01	MÍSTNOST 1	24,35 m <sup>2</sup>
C.01.02	KOUPELNA	4,19 m <sup>2</sup>
C.02.03	PŮDŇNÍ PROSTOR	23,91 m <sup>2</sup>

UŽITNÁ PLOCHA 52,45 m<sup>2</sup>

CELKOVÁ PLOCHA BYTU\* 53,27 m<sup>2</sup>

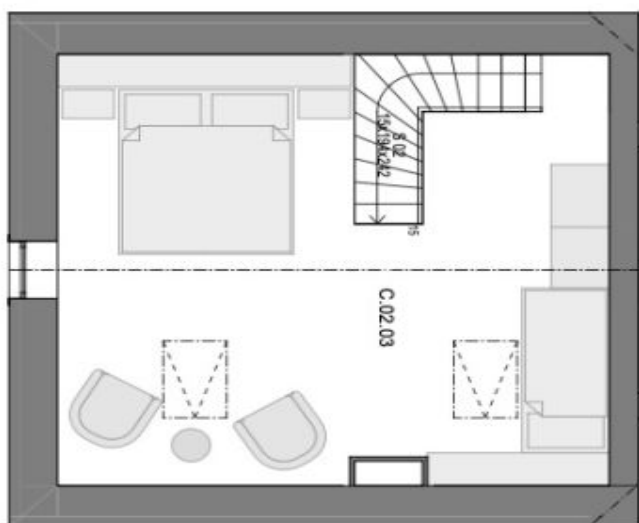
ZAHRADA -

PARKOVACÍ STÁNÍ 1



\* Vybavení nabytkem je pouze ilustrativní a není součástí jednotky.  
\* Celkovou plochu bytu tvoří půdorysná plocha všech místností bytu včetně plochy všech konstrukcí uvnitř bytu bez šachty

PODKROVÍ



2.NP

