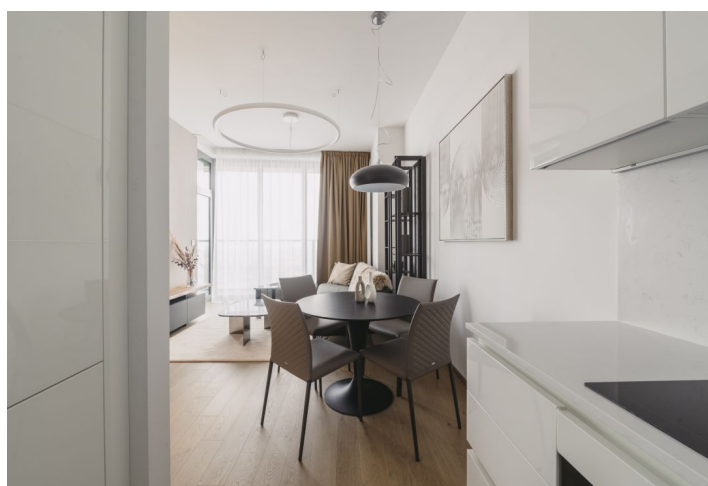
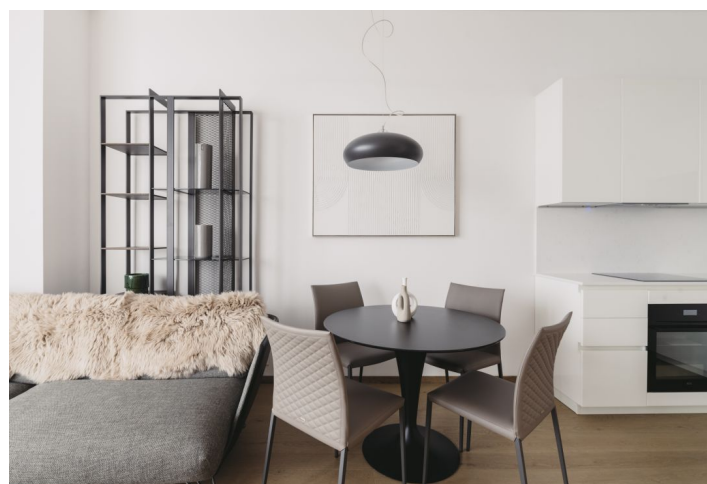
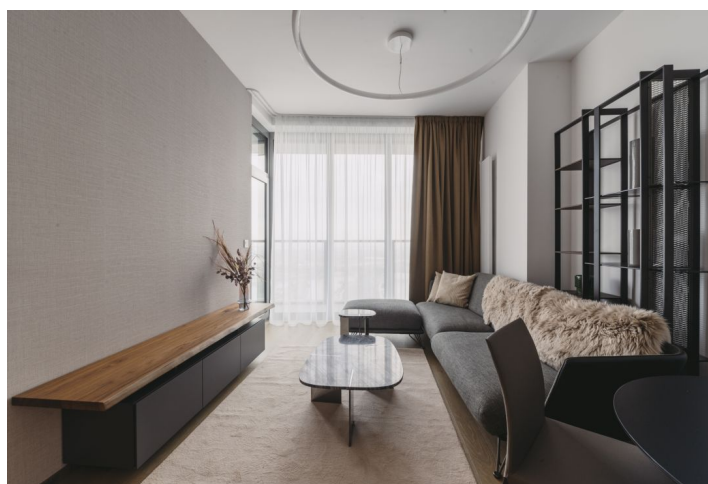




## Apartment One-bedroom (2+kk)

49.4 m<sup>2</sup>, Bratislava II, Ružinov, Pribinova

Ask for price





# Apartment One-bedroom (2+kk)

Ask for price

49.4 m², Bratislava II, Ružinov, Pribinova

Total area	58 m²
Floor area*	49 m²
Loggia	8 m²
Parking	Yes
Garage	Yes
Cellar	-
PENB	A
Reference number	107510

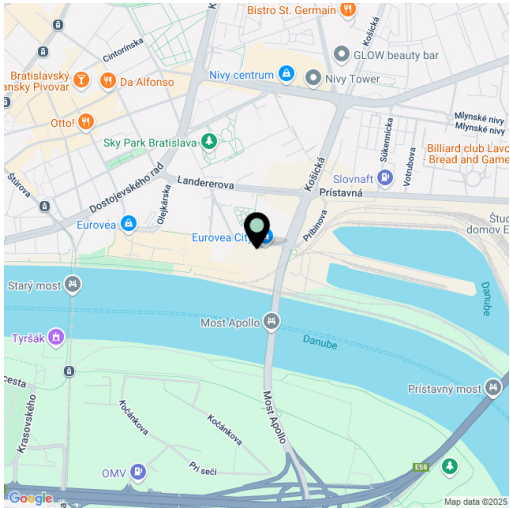
Fully furnished 1-bedroom apartment with a loggia, situated directly on the Danube embankment in the prestigious Eurovea Tower building. This iconic skyscraper features a modern architectural design with glass facades that blend perfectly with the surrounding scenery. The project not only offers unparalleled views and first-class comfort, but also a direct link to the dynamic environment of the Eurovea shopping center, which is synonymous with an urban lifestyle at the highest level.

The fully furnished apartment is located on the 36th floor in the Eurovea Tower. The entrance hall with a built-in storage space leads to the generous living room connected to the kitchen. The bedroom is bright thanks to floor-to-ceiling windows. Each room has access to the spacious **loggia** through sliding glass doors. The bathroom is equipped with a shower, sink, and toilet.

Facilities include exterior window blinds, cooling, and a space thermostat. Gres tiles and wall ceramic tiles in the bathrooms, interior **rebateless doors** (210 cm), fireproof entrance doors. The building in which the apartment is located has a 24h reception and entrance **lobby**. The entrance is monitored by a camera system.

The first skyscraper in Slovakia, Eurovea Tower is located in the vibrant downtown district of Bratislava, right on the Danube embankment. Eurovea Tower is connected to the Eurovea shopping center, which provides complete amenities—shops, services, doctors' offices, a gym, a workout room, a cinema, a wellness zone, restaurants, playgrounds, and bike routes. The historic city center is a 10-minute walk away.

Interior 49.4 m², loggia 8.4 m²



\* Area of the unit according to the Civil Code. The area consists of the sum total area of the entire unit bounded by perimeter walls.



## Apartment One-bedroom (2+kk)

49.4 m², Bratislava II, Ružinov, Pribinova

Ask for price

