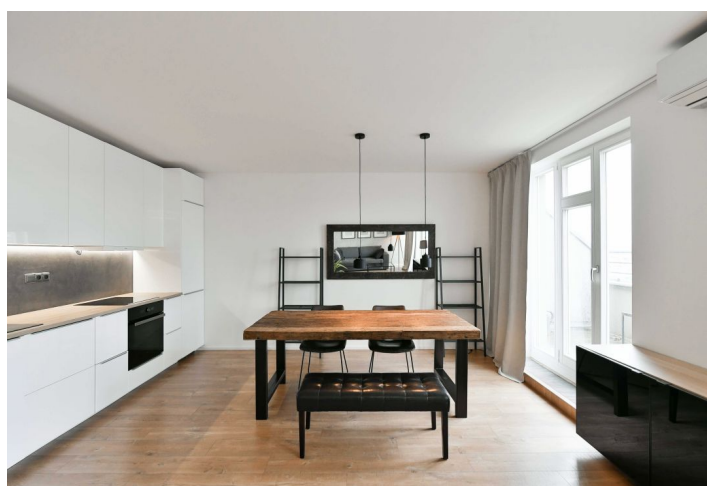
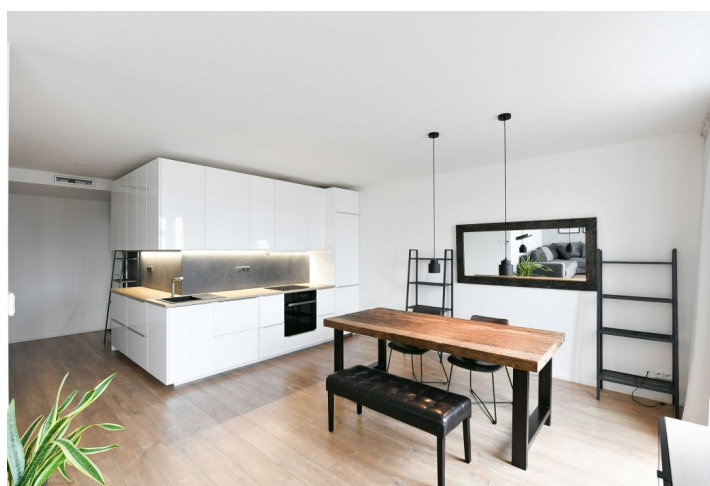




Apartment One-bedroom (2+kk)

Rented

85 m², Prague 5, Smíchov, Radlická



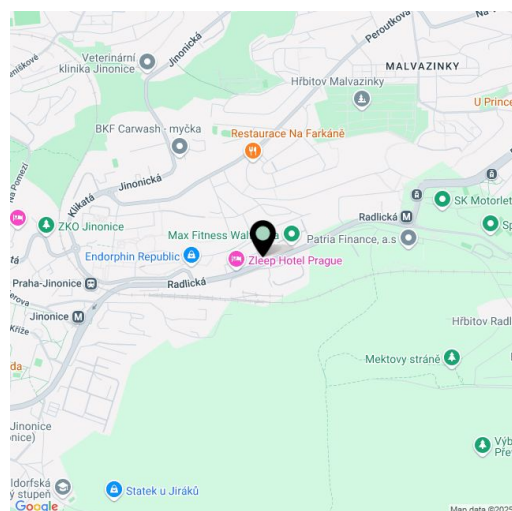


Apartment One-bedroom (2+kk)

Rented

85 m², Prague 5, Smíchov, Radlická

Total area	115 m²
Floor area*	85 m²
Terrace	30 m²
Parking	Courtyard parking.
Cellar	-
Service price	Monthly deposit for services, water, and heating: CZK 3,500/person. Electricity is billed separately.
PENB	C
Reference number	107445
Available from	Immediately



Benefiting from 2 terraces and nice far-reaching views, this spacious fully furnished air-conditioned 2-bathroom split-level apartment is on the 6th floor of a completely renovated Functionalist building with an elevator. Located just a short walk from the busy Anděl neighborhood, within walking distance of the Anděl metro station (3 minutes), tram and bus stops, the Na Knížecí Bus Station, and the Nový Smíchov shopping mall and entertainment center. Full amenities incl. a winter stadium are in close proximity, plus plenty of greenery: the Santoška Garden under the wooded Paví vrch area, the landscaped orchards on Skalka, and Mrázovka Park.

The lower level includes a bedroom, a **walk-in closet**/study area, a bathroom (bathtub, Japanese toilet with a remote), and an entrance hall with a built-in wardrobe. There is a **terrace** accessible from both the bedroom and the walk-in closet. The upper floor features a living room with a fully fitted open plan kitchen and **terrace** offering lovely far-reaching views of Prague, plus a second bathroom (walk-in shower, toilet).

Air-conditioning, wooden floating floors, tiles, carpet in the bedroom, central heating, washer, dryer, dishwasher, induction cooktop. A **courtyard parking** space is included.

* Area of the unit according to the Civil Code. The area consists of the sum total area of the entire unit bounded by perimeter walls.