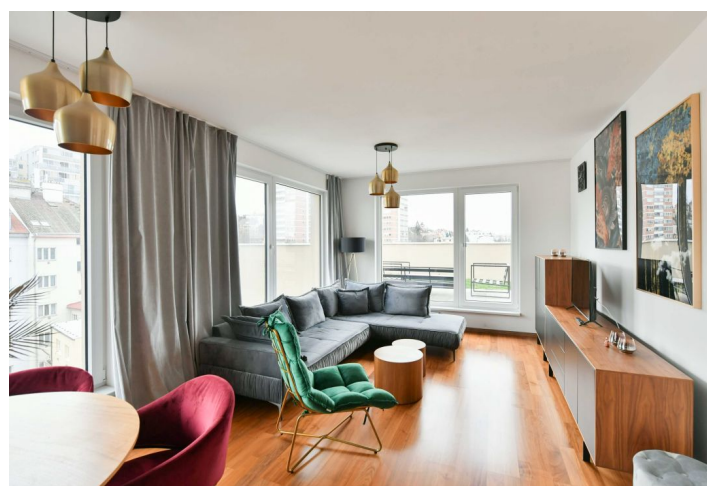
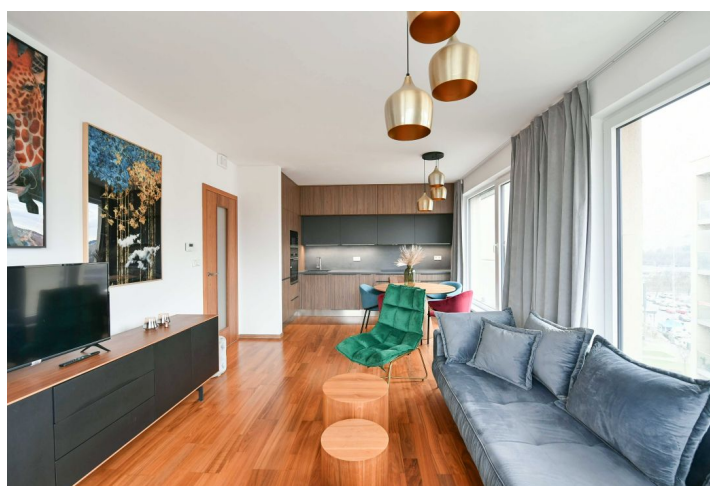
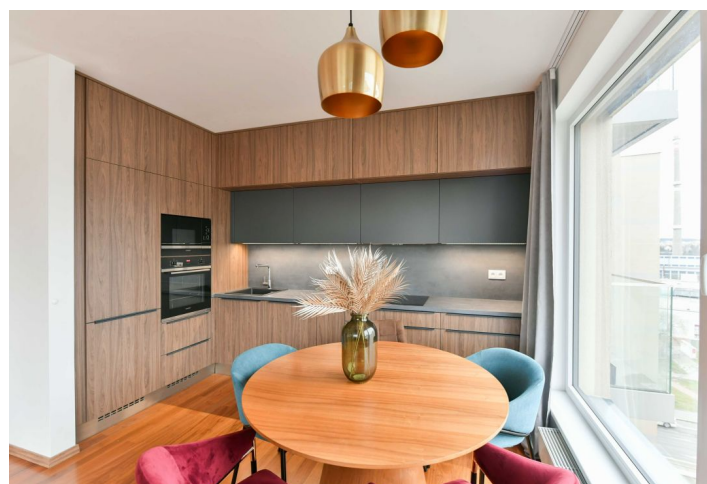
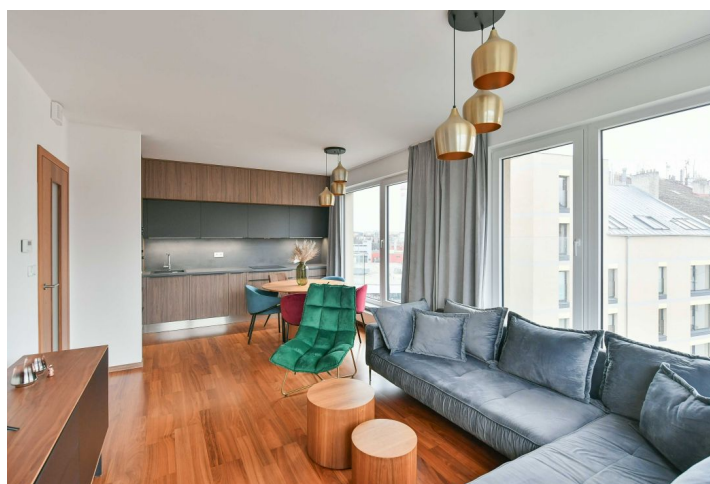




## Apartment Two-bedroom (3+kk)

Rented

71 m², Prague 10, Michle, U plynárny





# Apartment Two-bedroom (3+kk)

Rented

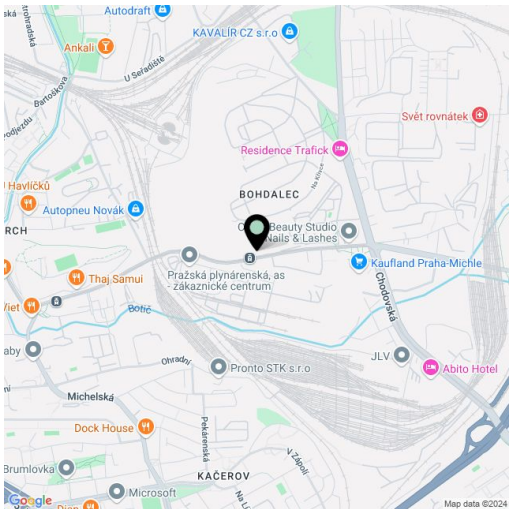
71 m², Prague 10, Michle, U plynárny

Total area	111 m²
Floor area*	71 m²
Terrace	40 m²
Parking	Garage and outdoor parking.
Garage	Yes
Cellar	Yes
Service price	Monthly deposit for services, water, and heating: CZK 7,000. Electricity is billed separately.
PENB	B
Reference number	107255
Available from	Immediately

This furnished apartment with a large partially grass-covered terrace and far-reaching views is on the 6th floor of the modern Bohdalec Sky Residence with an elevator and parking, in a residential neighborhood in Michle, Prague 10. The location offers great amenities and quick access to the city center, with Wenceslas Square just 15 minutes away. Within easy reach of a supermarket, tram and bus stops, near Bohdalec Hill, the Eden shopping center, and the sought-after leisure and recreation zone around Hamerský Pond.

The apartment includes a living room with a fully fitted open plan kitchen and dining area, 2 bedrooms each with a built-in wardrobe, a bathroom with a bathtub, a separate toilet, and an entrance hall with a built-in wardrobe. The terrace is accessible from all main rooms.

Heat recovery ventilation, hardwood floors, tiles, central heating, washer, dryer, dishwasher, induction stove top, microwave oven, cellar. A garage parking space and a covered outdoor parking space in the courtyard are included.



\* Area of the unit according to the Civil Code. The area consists of the sum total area of the entire unit bounded by perimeter walls.