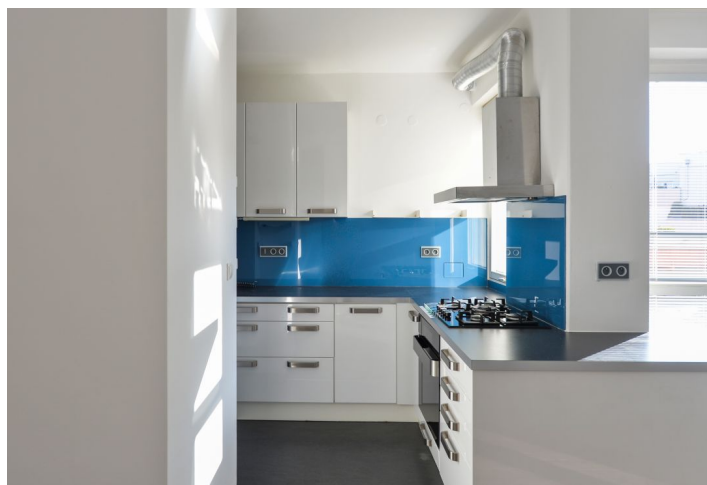




Apartment Two-bedroom (3+kk)

Rented

92 m², Prague 5, Stodůlky, Klausova





Apartment Two-bedroom (3+kk)

Rented

92 m², Prague 5, Stodůlky, Klausova

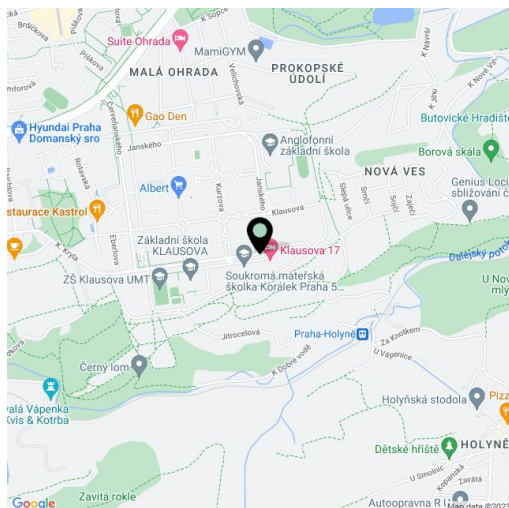
Total area	141 m²
Floor area*	92 m²
Terrace	49 m²
Parking	-
Cellar	-
PENB	G
Reference number	10721
Available from	Immediately

Boasting a 49 m² terrace, this unfurnished 2-bedroom apartment is situated on the third floor of a modern gated project from 1998 with 24-hour security, camera system and a private garden. Located in close vicinity of the Prokopské and Dalejské Valleys, convenient to the German and Japanese schools. Full range of amenities in the area, a few bus stops or a ten minute walk to Lužiny metro station, line B.

The interior includes two bedrooms, one with terrace access, living room with terrace access, a fully fitted open kitchen, bathroom with tub, separate toilet, walk-in closet, and entry hall with built-in wardrobes.

Wood floors, blinds, gas boiler, floor heating, dishwasher, microwave, terrace furniture, video entry phone. No lift. Easy parking on the street. Common building charges and water CZK 3.000 monthly. Gas and electricity will be transferred to the tenant.

In addition to regular property viewings, we also offer **real time video viewings** via WhatsApp, FaceTime, Messenger, Skype, and other apps.



* Area of the unit according to the Civil Code. The area consists of the sum total area of the entire unit bounded by perimeter walls.