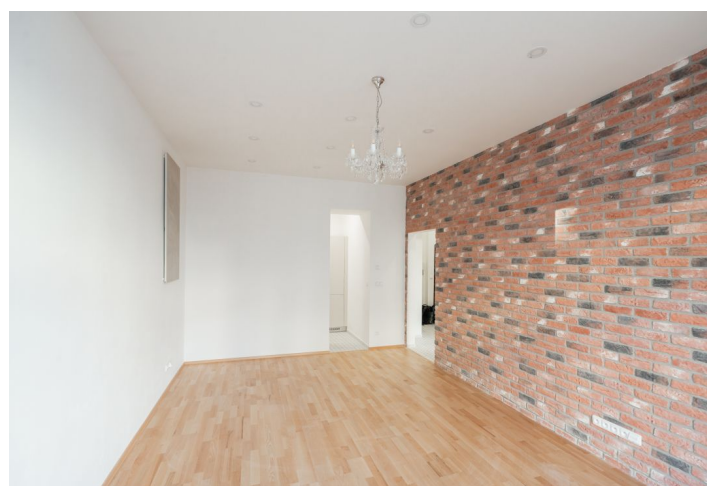




Apartment One-bedroom (2+kk)

Rented

53 m², Prague 10, Vršovice, Žitomířská





Apartment One-bedroom (2+kk)

Rented

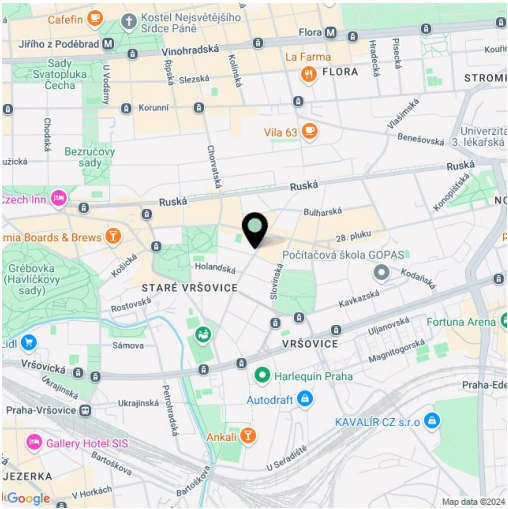
53 m², Prague 10, Vršovice, Žitomířská

Total area	53 m²
Parking	-
Cellar	Yes
Service price	Monthly deposit for services and water: CZK 1,400 for one person. Electricity is billed separately.
PENB	G
Reference number	107095
Available from	01.02.2026

This newly refurbished unfurnished apartment is on the 2nd floor of a renovated residential building with an elevator, located on a one-way side street in Prague 10 on the border of Vršovice and Vinohrady, within easy reach of everything you need. There are great amenities incl. many cafes and restaurants within easy reach, and the Eden shopping center and several indoor and outdoor sports fields are within walking distance. Heroldovy Sady and Svatopluka Čecha Square are also nearby. Buses and tram stops are not far from the building, and the ride to the city center takes less than 10 minutes.

The apartment features a living room with a dining area, a fully fitted open plan kitchen and **bay windows**, a bedroom with a large built-in wardrobe, a shower bathroom with a toilet, a utility room, and an entrance hall with built-in storage.

Wooden floating floors, tiles, **new casement windows**, blinds, low-cost electric radiant panels for heating, electric boiler for hot water, dishwasher, induction stove top.



* Size of the unit according to the Housing Act.
The area consists of the sum total of the internal area of every room.