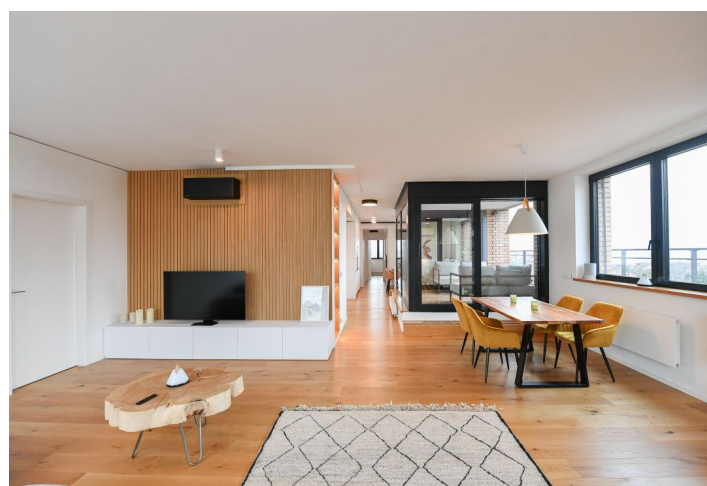
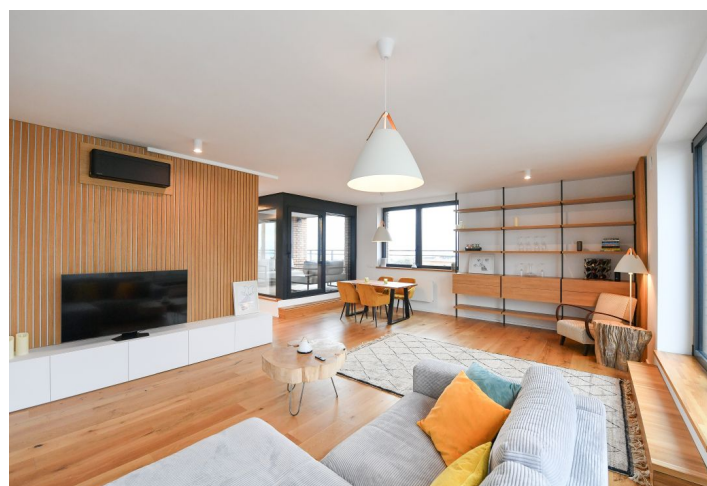




## Apartment Two-bedroom (3+kk)

Rented

120.7 m², Prague 5, Košíře, Naskové



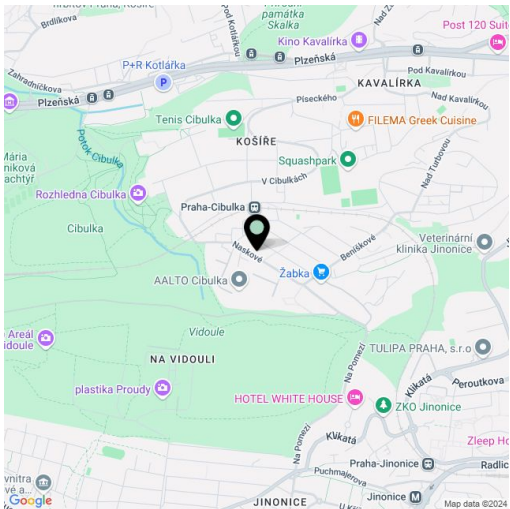


# Apartment Two-bedroom (3+kk)

Rented

120.7 m², Prague 5, Košíře, Naskové

Total area	139 m²
Floor area*	121 m²
Terrace	18 m²
Parking	Two garage parking spaces.
Garage	Yes
Cellar	Yes
Service price	Monthly deposit for services, water, and heating: CZK 7,000. Electricity is billed separately.
PENB	B
Reference number	106899
Available from	Immediately



Benefiting from a large terrace and nice far-reaching views, this good quality fully furnished 2-bathroom apartment is on the 4th floor of the recently built PARVI Cibulka residential project on the site of a former industrial hall. Amenities include a 24/7 reception and security, a fitness center, and a green park in the courtyard. Located on the very edge of the Vidoule nature preserve, near the Cibulka forest park, in a quiet residential area within easy reach of full amenities and services. Close to the Jinonice metro station, Cibulka train station with connections to Anděl and the city center, and within quick reach of the Anděl/Nový Smíchov commercial center. Conveniently located for the German School.

The interior features a spacious living room with a fully fitted open plan kitchen and **terrace** access, a master bedroom with built-in wardrobes and an en-suite bathroom (walk-in shower, toilet), a second toilet, a family bathroom (bathtub), a separate toilet with a bidet shower, a utility/storage room, and an entrance hall with a built-in wardrobe.

**Air-conditioning, hardwood floors,** tiles, security entry door, ample custom-made built-in storage, automatic exterior blinds, central heating, washer, dryer, dishwasher, induction stove top, wine fridge, microwave oven, video entry phone, **cellar,** camera system, pram storage, bike and dog wash area. **Two garage parking spaces** are included.

\* Area of the unit according to the Civil Code. The area consists of the sum total area of the entire unit bounded by perimeter walls.