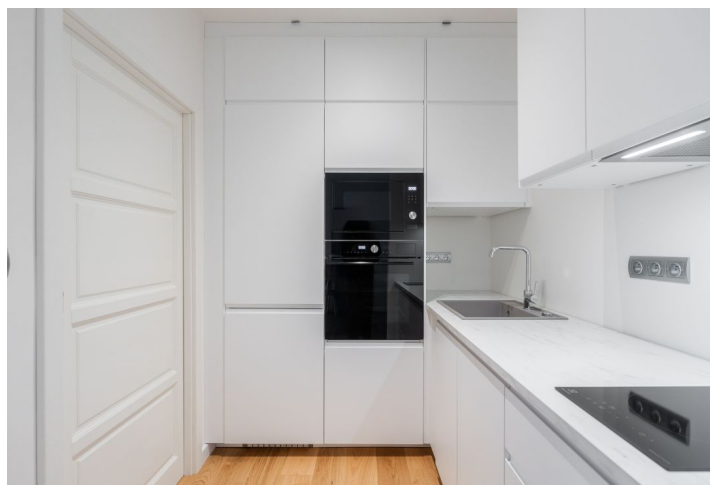
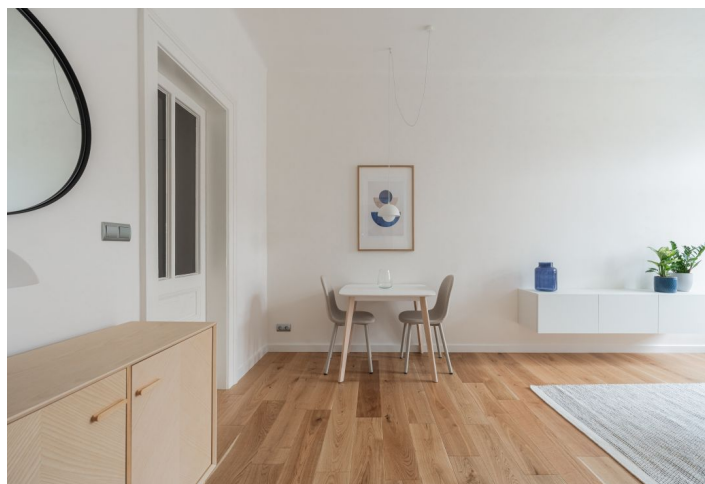




## Apartment One-bedroom (2+kk)

Rented

46 m<sup>2</sup>, Prague 10, Vršovice, Slovinská





# Apartment One-bedroom (2+kk)

Rented

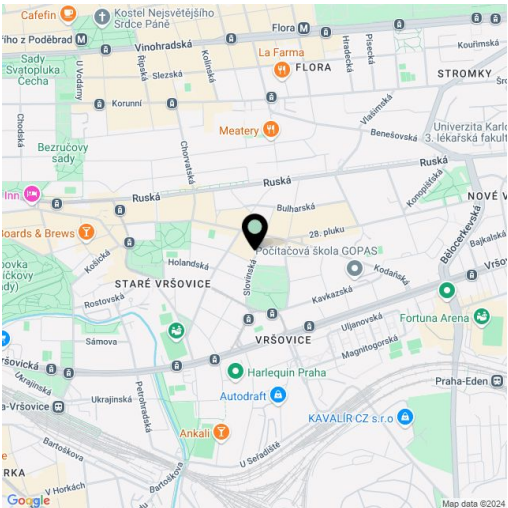
46 m², Prague 10, Vršovice, Slovinská

Total area	50 m²
Floor area*	46 m²
Balcony	4 m²
Parking	-
Cellar	-
Service price	Deposit for services, water, and Internet: CZK 1,600 for 1 person, additional person CZK 800. Electricity and gas are billed separately.
PENB	Not required
Reference number	106819
Available from	Immediately

This bright, newly refurbished, fully furnished apartment with 2 balconies, on the 4th floor of a renovated traditional residential corner building with an elevator is situated in close vicinity of the green Svatopluka Čecha Square and Heroldovy Sady Park, and complete amenities including numerous restaurants, cafes, and wine bars. Located within easy reach of the city center, near a bus (50 m) and tram stop, a few stops from the Náměstí Míru metro station.

The interior features a living room with a fully fitted open plan kitchen and balcony, a bedroom with a large built-in wardrobe, access to the second balcony, and an en-suite bathroom (walk-in shower), a separate toilet, and an entrance hall with built-in wardrobes.

Hardwood floors, tiles, gas boiler, washer/dryer, dishwasher, induction stove top, microwave oven, chip entry to the building.



\* Size of the unit according to the Housing Act.  
The area consists of the sum total of the internal area of every room.