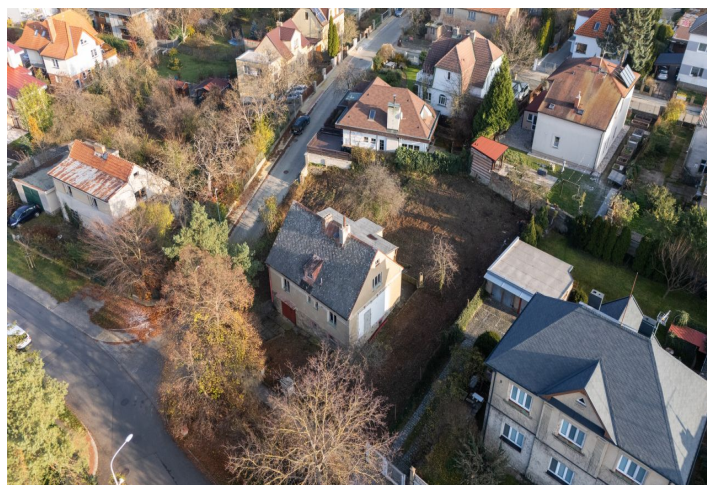




Land

958 m², Prague 6, Suchdol

€ 1 006 574 | CZK 24 500 000





Land

958 m², Prague 6, Suchdol

€ 1 006 574 | CZK 24 500 000

Price per sq. m.	25 574 CZK
Total area	958 m ²
Land type	Housing
Reference number	106754

This corner plot of almost 1,000 m², with all utility connections and a valid building permit, is situated in a quiet and green location next to a large forest park in the traditional villa district of Prague 6 – Suchdol.

The plot is gently sloping, fenced, and cleared of self-seeded vegetation, with only healthy solitary trees preserved. Currently, there is a structure from 1974 on the property, for which a demolition order has been issued. The offer includes a project for **a new family house with a valid building permit.**

This picturesque and peaceful location lies at the corner of two cul-de-sac streets, about 200 meters from **the Roztocký háj – Tiché údolí nature reserve**. **A private kindergarten** is nearby, and an elementary school is within walking distance. The district offers shops, medical services, a pharmacy, restaurants, **a swimming pool**, and even **a community garden**. Convenient transport connections are provided by buses terminating at the Dejvická metro station, and the **Czech University of Life Sciences campus** is just 5 minutes away by car. In the future, Suchdol is planned to be connected to other parts of Prague by a tram line.

Total area 958 m².