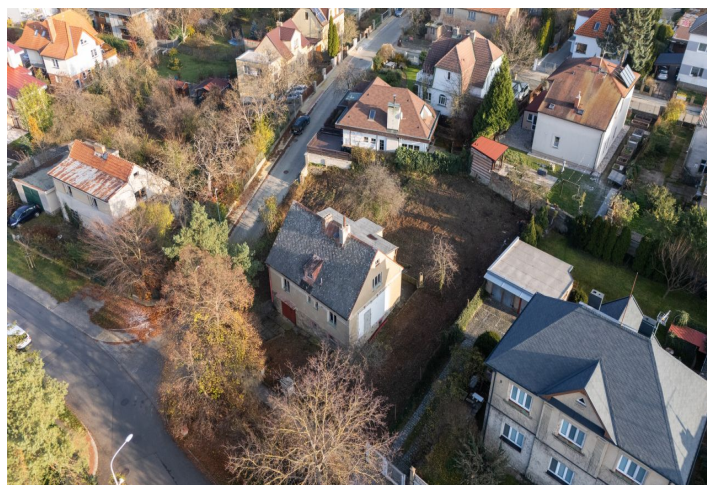




House Three-bedroom (4+kk)

210 m², Prague 6, Suchdol

€ 1 006 574 | CZK 24 500 000





House Three-bedroom (4+kk)

€ 1 006 574 | CZK 24 500 000

210 m², Prague 6, Suchdol

Plot	858 m²
Foot print	100 m²
Parking	-
Cellar	-
PENB	G
Reference number	106753

This family house from 1974, intended for complete renovation or demolition, stands on a corner plot of almost 1,000 m² in the traditional villa district of Prague 6 – Suchdol, in a quiet and green location near the Roztocký Grove.

The house has 2 above-ground floors and 1 basement level, with a **built-up area of 100 m²**. It is connected to the water supply and gas network and is linked to the sewer system. A demolition order has been issued for the property, and the offer includes a project for a new family house with a valid building permit. The plot is gently sloping, fenced, and cleared of self-seeded vegetation, with only **healthy solitary trees** preserved.

This picturesque and peaceful location lies at the corner of two cul-de-sac streets, about 200 meters from the edge of the **expansive Roztocký háj – Tiché údolí nature reserve**. A private kindergarten is just a short walk away, and an elementary school is within walking distance. The district offers shops, medical services, a pharmacy, restaurants, **a swimming pool**, and even **a community garden**. Convenient transport connections are provided by buses terminating at the Dejvická metro station, and a **university campus** is just 5 minutes away by car. In the future, Suchdol will be connected to the city by a tram line.

Total floor area 210 m², built-up area 100 m², garden 858 m², plot 958 m².