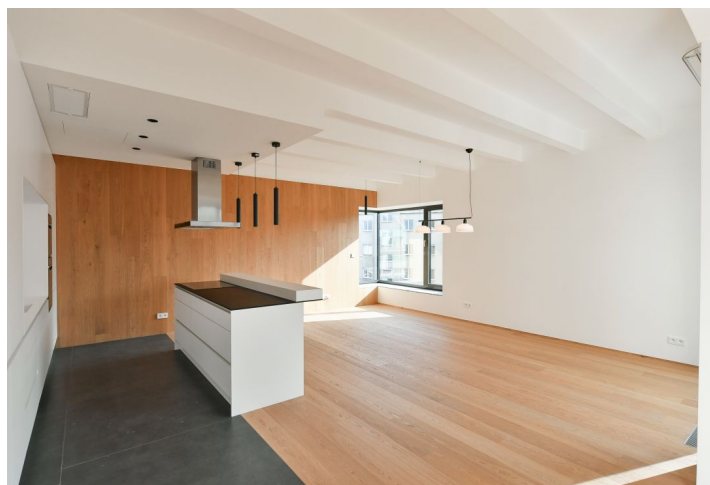
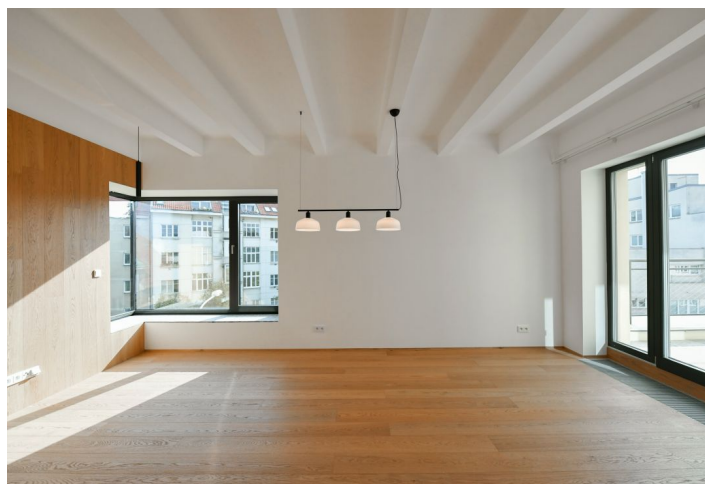




Apartment Four-bedroom (5+kk)

Rented

179.8 m², Prague 6, Střešovice, Na Hubálce





Apartment Four-bedroom (5+kk)

Rented

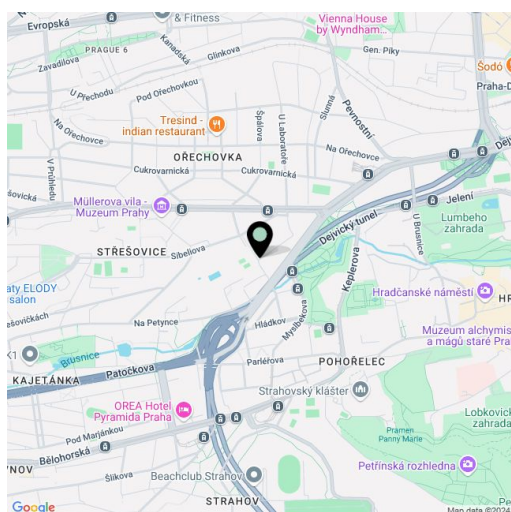
179.8 m², Prague 6, Střešovice, Na Hubálce

| | |
|------------------|---|
| Total area | 236 m² |
| Floor area* | 180 m² |
| Balcony | 11 m² |
| Terrace | 45 m² |
| Parking | Two parking spots on the plot. |
| Cellar | 2 m² |
| Service price | Monthly deposit for services, water, and heating: CZK 11,000. Electricity is billed separately. |
| PENB | C |
| Reference number | 106503 |
| Available from | Immediately |

Boasting 3 terraces, 2 balconies and views of the Prague Castle and Petřín Hill, this unfurnished 3-bedroom 2-bathroom split-level apartment is situated on the 4th floor of the Vila Grégr, a completely refurbished, architecturally unique Functionalist villa surrounded by a garden from the southern and western side. Located in an attractive area of Střešovice, only a few steps from Max van der Stoel Park and the picturesque Pohořelec, within walking distance of the Prague Castle, Large Strahovská Garden, and Petynka swimming pool. Within easy reach of full amenities including an art school and the Jan Kepler high school, as well as plenty of Prague's major sights, museums, and galleries. The Hradčanská metro station (line A) is 5 minutes away by public transport.

The interior features, on the lower level, a living room with a fully fitted open plan kitchen, a dining area, a **terrace**, and built-in storage, 2 bedrooms with built-in wardrobes and **balconies**, a bathroom (bathtub), and a separate toilet. The upper level includes an open gallery with a **terrace**, a master bedroom with an en-suite bathroom (walk-in shower, toilet), and a large **terrace**, and a spacious adjacent fitted **walk-in closet/study**.

Air-conditioning, hardwood floors, tiles, built-in wardrobes, automatic exterior blinds on the upper floor, central underfloor heating, dishwasher, induction stove top, microwave oven, **cellar**, charger for electric cars, elevator. **Two parking spaces** on the plot are included.



* Area of the unit according to the Civil Code. The area consists of the sum total area of the entire unit bounded by perimeter walls.