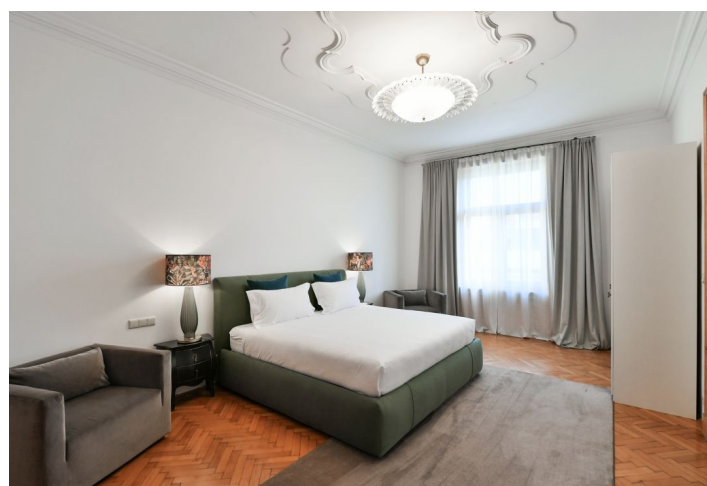
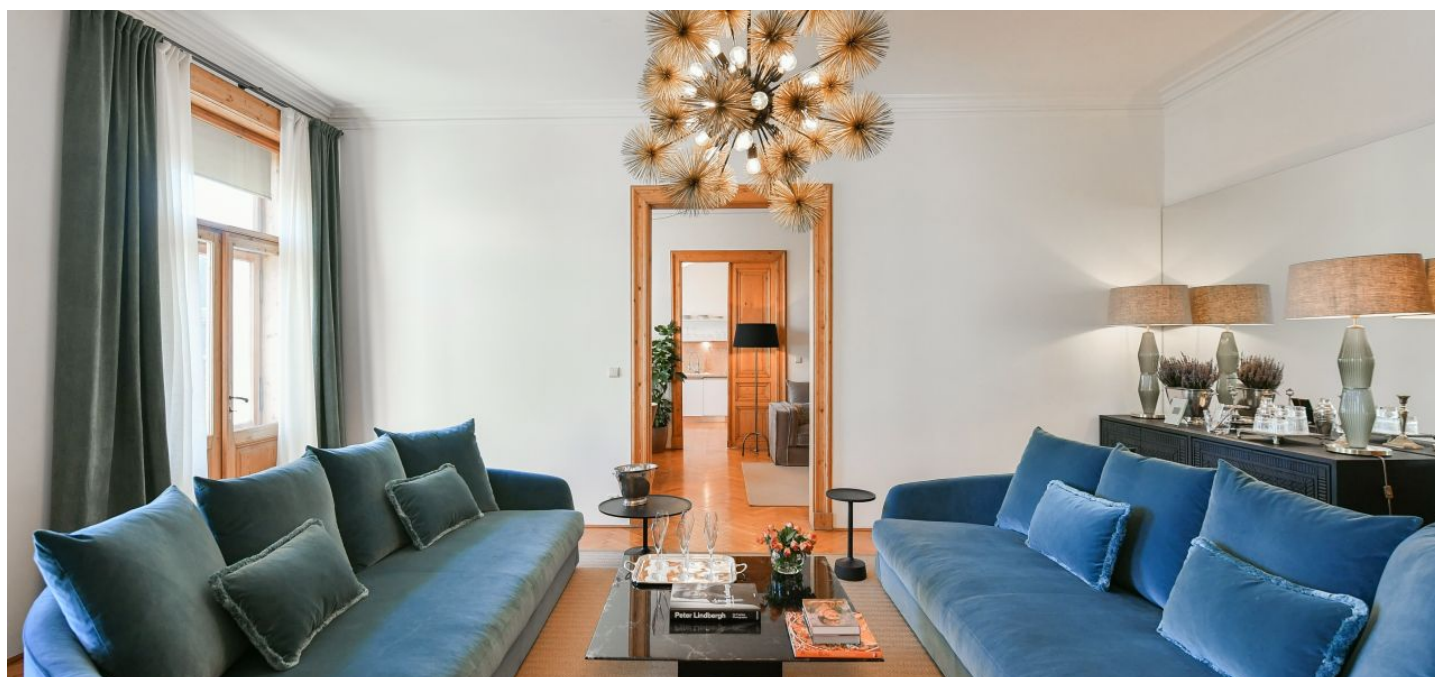




Apartment Four-bedroom (5+1)

Rented

171 m², Prague 2, Vinohrady, Ibsenova





Apartment Four-bedroom (5+1)

Rented

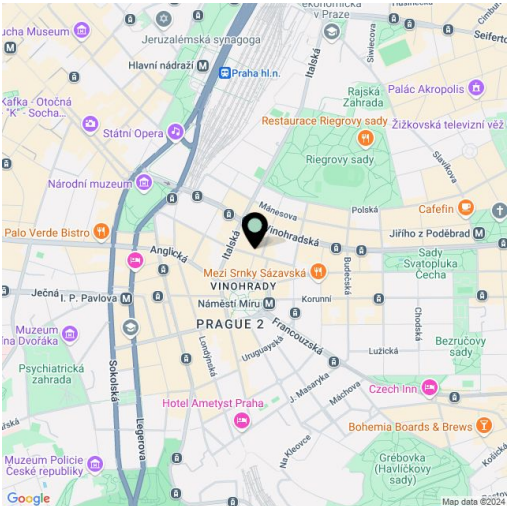
171 m², Prague 2, Vinohrady, Ibsenova

Total area	177 m²
Floor area*	171 m²
Balcony	6 m²
Parking	Garage parking.
Garage	Yes
Cellar	-
Service price	Services and utilities: CZK 12,000 per month.
PENB	Not required
Reference number	106442
Available from	Immediately

This fully furnished 3-bedroom 2-bathroom apartment with 2 balconies is on the 4th floor of one of the most beautifully renovated and outstanding examples of Neo-Classic architecture in Vinohrady. Located in a highly sought-after residential neighborhood with full amenities and instant transportation connections, just steps from the Náměstí Míru metro station and tram links. Within walking distance of the city center.

The interior features a walk-through living room with a TV set, a second living room with a balcony and views of the adjacent Vinohradské Theater, a fully fitted kitchen with a dining area, a master bedroom with an en-suite bathroom (walk-in shower, bidet, toilet), a walk-through fitted walk-in closet, a bedroom with a second balcony and views of the courtyard, Prague Castle, and Petřín Hill, a third bedroom, a family bathroom (bathtub, bidet, toilet), a utility room, and a spacious entrance hall.

Air-conditioning, Italian designer furniture, hardwood parquet floors, tiles, built-in wardrobes, large windows, high ceilings, gas boiler, washer, dryer, Miele kitchen appliances, dishwasher, kitchenware. Parking space available at EUR 200/month.



* Size of the unit according to the Housing Act.
The area consists of the sum total of the internal area of every room.