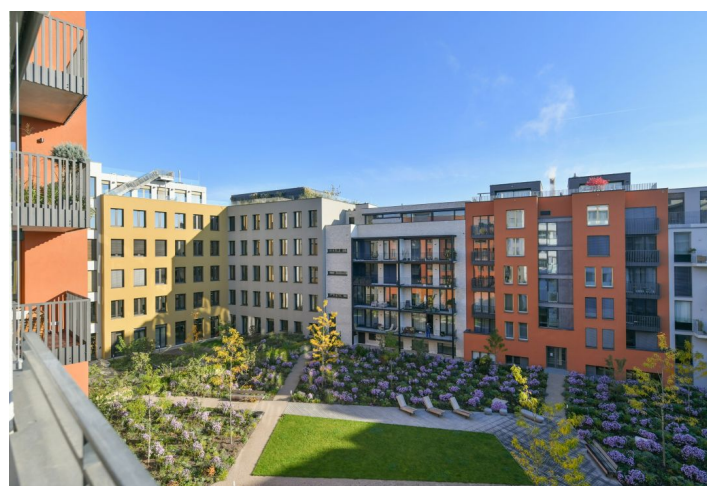
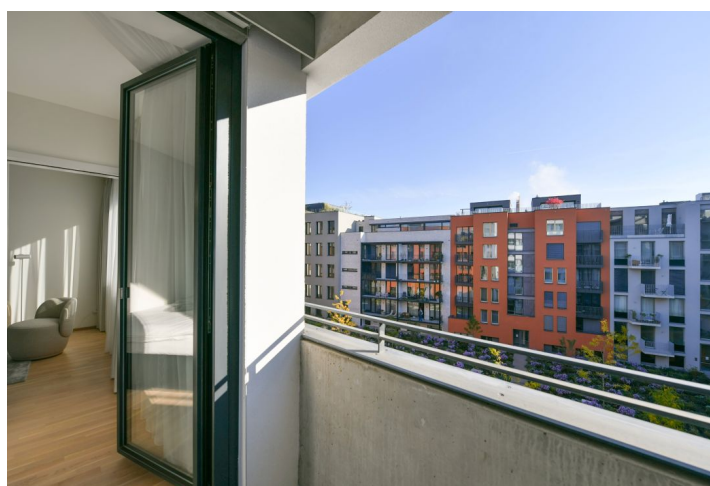
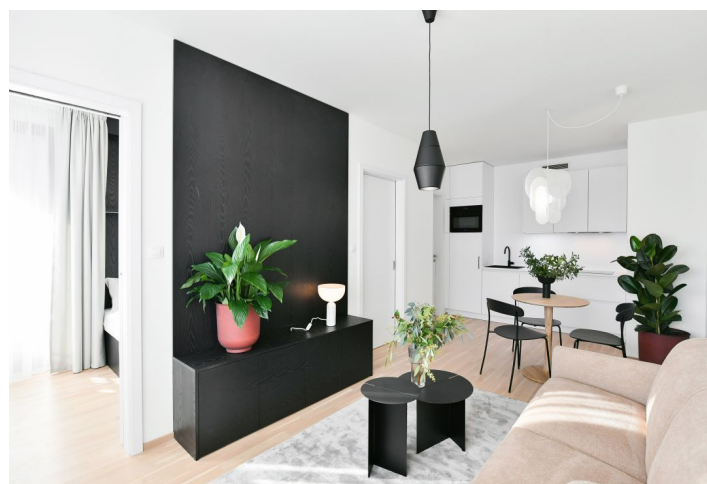
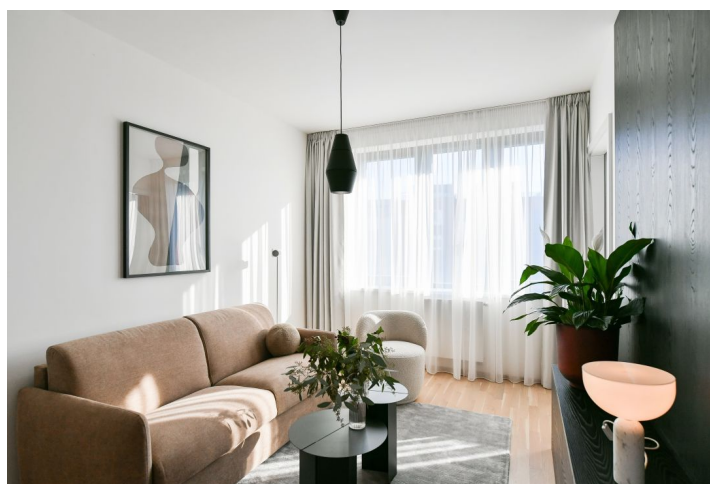




## Apartment One-bedroom (2+kk)

Rented

42.2 m², Prague 5, Smíchov, Albrightové





# Apartment One-bedroom (2+kk)

Rented

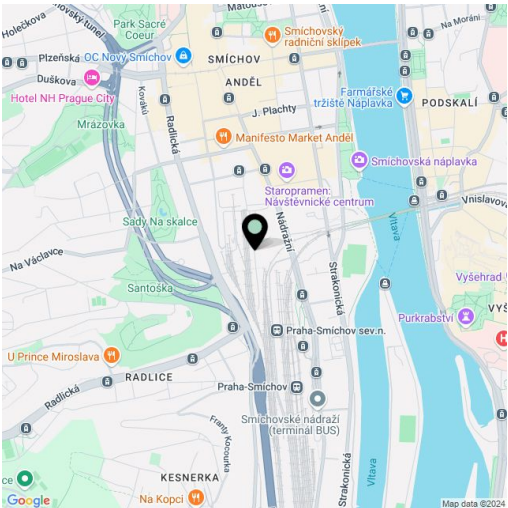
42.2 m², Prague 5, Smíchov, Albrightové

Total area	45 m²
Floor area*	42 m²
Balcony	3 m²
Parking	-
Cellar	3 m²
Service price	Monthly deposit for services, water, and heating: CZK 3,500 for one peron, another person CZK 800. Electricity is billed separately.
PENB	B
Reference number	106433
Available from	Immediately

This fully furnished apartment with a balcony is situated on the 3rd floor of the Smíchov City residence - a new building with an elevator and parking. Located close to the Anděl commercial center in Smíchov, in a newly arising district with a pedestrian zone, great accessibility by metro and tram, and easy reach of the French School, the Smíchov and Výtoň embankments, several sports grounds, rich amenities and services, the Anděl metro station, and the Na Knížecí bus terminal.

The interior features a living room with a fully fitted open plan kitchen and dining area, a bedroom with built-in wardrobes and **balcony** facing the quiet courtyard, a bathroom (walk-in shower, toilet), and an entrance hall with built-in wardrobes.

**Heat recovery ventilation, hardwood floors**, tiles, French windows, central heating, dishwasher, induction cooktop, microwave oven, baby-carriage room, **cellar**.



\* Area of the unit according to the Civil Code. The area consists of the sum total area of the entire unit bounded by perimeter walls.