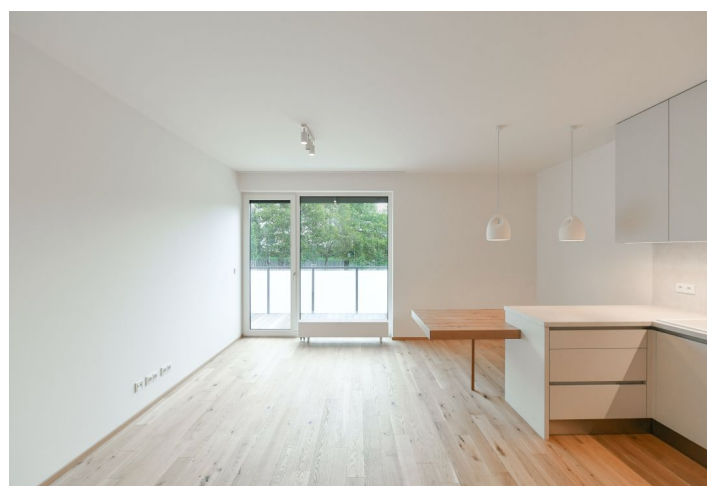
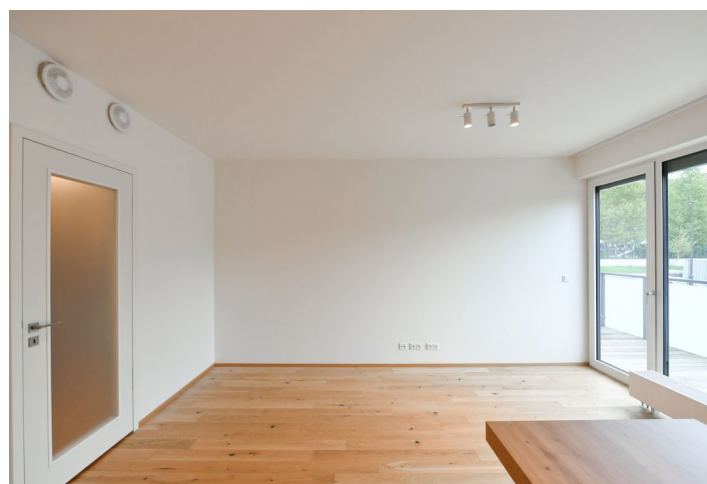




Apartment One-bedroom (2+kk)

Rented

52.43 m², Prague 5, Smíchov, Podbělohorská





Apartment One-bedroom (2+kk)

Rented

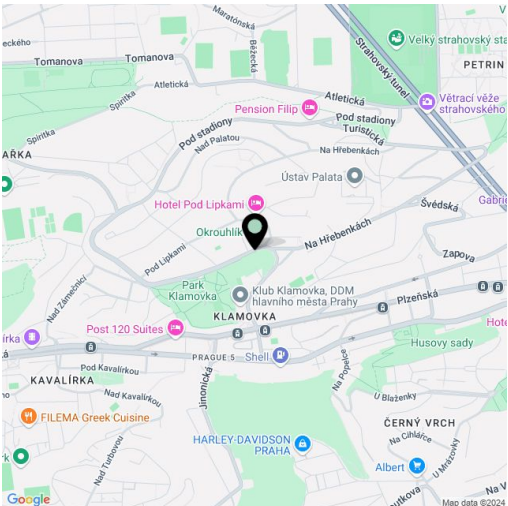
52.43 m², Prague 5, Smíchov, Podbělohorská

| | |
|------------------|--|
| Total area | 61 m² |
| Floor area* | 52 m² |
| Balcony | 8 m² |
| Parking | Outdoor parking. |
| Cellar | - |
| Service price | Monthly deposit for services, water, and heating: CZK 4,200. Electricity is billed separately. |
| PENB | B |
| Reference number | 106332 |
| Available from | Immediately |

This brand-new, good quality unfurnished apartment with a balcony is situated on the 3rd floor of Vilapark Klamovka, a newly constructed residential project. Located in a quiet Prague 5 area surrounded by greenery, in close vicinity of Klamovka park, and with very good connections to the city center - ten minutes by tram or bus to the Nový Smíchov commercial and entertainment center and Anděl metro station. Conveniently located for the French School.

The apartment includes a living room with a fully fitted open plan kitchen and dining area, a bedroom with a built-in wardrobe, a bathroom (bathtub, toilet), a storage room, and an entrance hall with built-in wardrobes. The balcony is accessible from both main rooms.

Heat recovery ventilation, hardwood floors, tiles, automatic exterior blinds, central heating, dishwasher, induction stove top, elevator, security cameras in the building. An extended outdoor parking space is included.



* Area of the unit according to the Civil Code. The area consists of the sum total area of the entire unit bounded by perimeter walls.