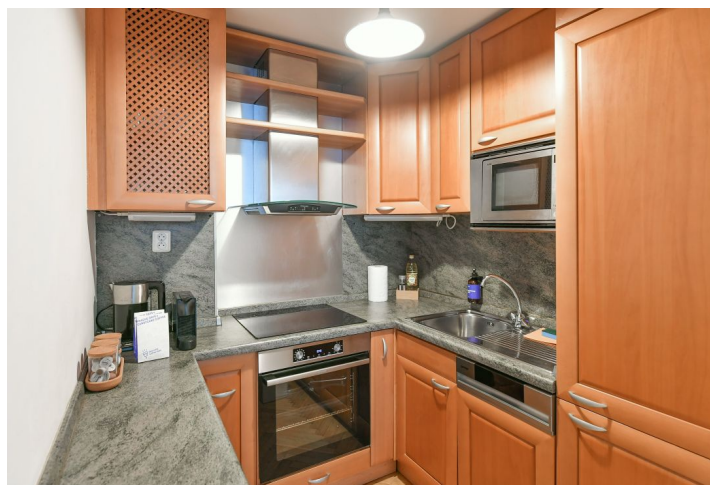
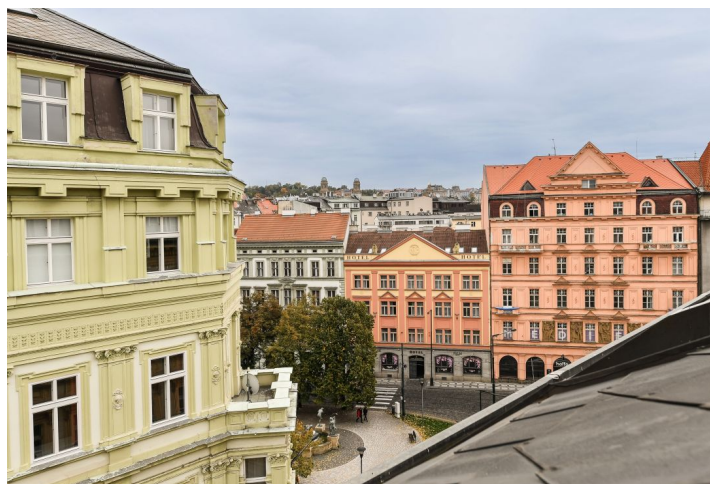




## Apartment One-bedroom (2+1)

**Sold**

47 m<sup>2</sup>, Prague 1, Nové Město, Senovážné náměstí





# Apartment One-bedroom (2+1)

Sold

47 m², Prague 1, Nové Město, Senovážné náměstí

Total area	47 m²
Parking	-
Cellar	Yes
PENB	G
Reference number	106298

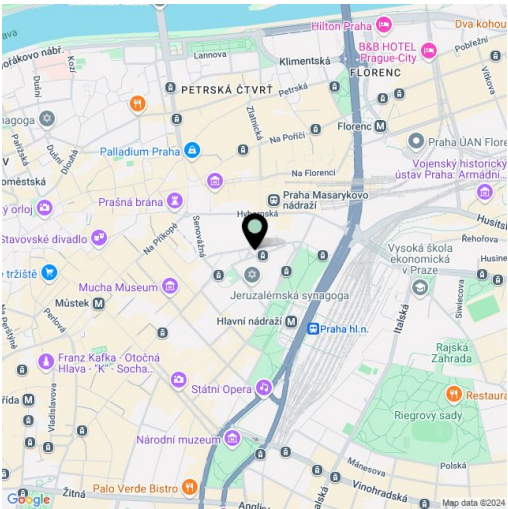
The apartment on the top floor of a very well-maintained historic apartment building in the very center of the metropolis in New Town, near the square with a park and close to Masaryk and the Main Train Stations.

The practical layout of the 4th floor apartment consists of a living room, a separate kitchen, 1 bedroom, a bathroom (bathtub, toilet, sink, washing machine) and an anteroom. The windows of the apartment are south-facing towards the square with a nice park landscaping and a fountain with a sculpture of Czech musicians.

Facilities include wooden windows, refurbished parquet floors and tiles. Heating is provided by a central boiler, the apartment has a portable air conditioner. The building has well-maintained common areas and a modern elevator.

The location allows for excellent accessibility, either by metro, tram or train. The neighborhood is full of restaurants, cafes, shops, services and cultural institutions, and the Old Town and Wenceslas Squares as well as the Republic Square are within walking distance.

Floor area 47.1 m², cellar 3.27 m².



\* Size of the unit according to the Housing Act.  
The area consists of the sum total of the internal area of every room.