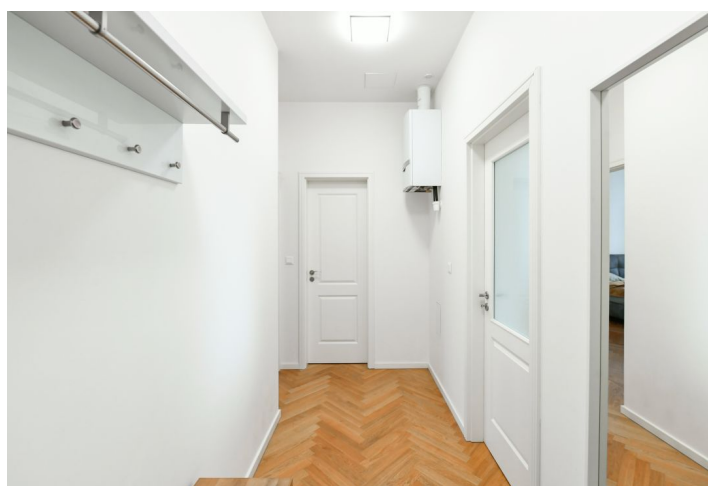
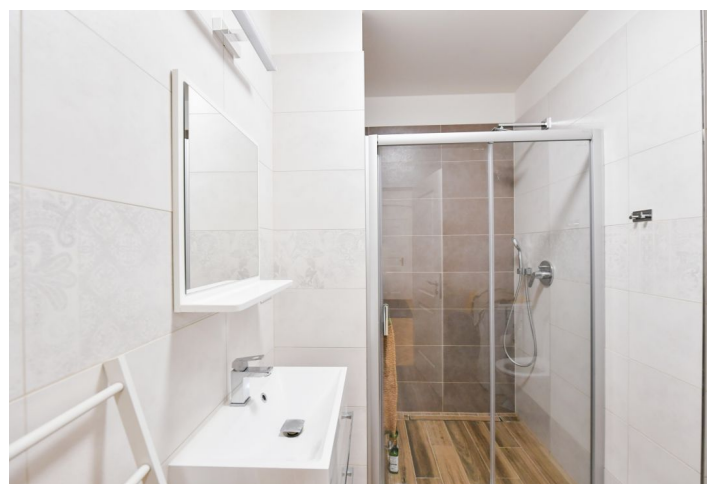




## Apartment One-bedroom (2+kk)

Sold

58.4 m<sup>2</sup>, Prague 2, Nové Město, Sokolská





## Apartment One-bedroom (2+kk)

**Sold**58.4 m<sup>2</sup>, Prague 2, Nové Město, Sokolská

Total area	58 m <sup>2</sup>
Parking	-
Cellar	-
PENB	E
Reference number	106250

This bright, airy, and fully furnished apartment is located on the 2nd floor of a newly revitalized Neo-Renaissance building with an elevator near Fügner Square in New Town. This desirable area in the center of Prague 2 offers a varied cultural and social life and perfect transport accessibility to other parts of the city.

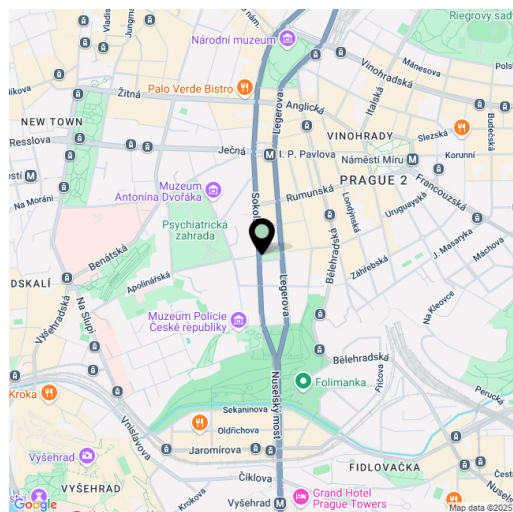
The layout of the apartment consists of a spacious living room with a kitchen, an east-facing bedroom facing the **courtyard**, a bathroom with a **shower** and toilet, and an entrance hall.

The apartment is equipped with **wooden parquet floors** in the living rooms, ceramic tiles in the bathroom, large **casement windows**, a kitchen unit with appliances, and lighting. **High ceilings** create a sense of airy space. Heating is by a gas boiler. The building, built between 1895 and 1897 according to the designs of architect František Xaver Pospíšil, has now been completely renovated, including the installation of a **new elevator** and common areas. Residents are allowed to park in the blue zone in front of the building.

**New Town** is a typically urban district, close to historical and cultural monuments and many restaurants, cafes, shops, schools, kindergartens, theaters and clubs. **Regular markets** are held on the nearby Tyl Square, and **Folimanka Park** is a green area suitable for relaxation or sports activities. It's just a few minutes' walk from the building to the **I.P. Pavlova metro station (line C)**, tram, and bus stop, which connects the center of Prague with other parts of the city.

Floor area 58.4 m<sup>2</sup>.

The unit is rented with a three-month notice period.



\* Area of the unit according to the Civil Code. The area consists of the sum total area of the entire unit bounded by perimeter walls.



## Apartment One-bedroom (2+kk)

**Sold**

58.4 m<sup>2</sup>, Prague 2, Nové Město, Sokolská

