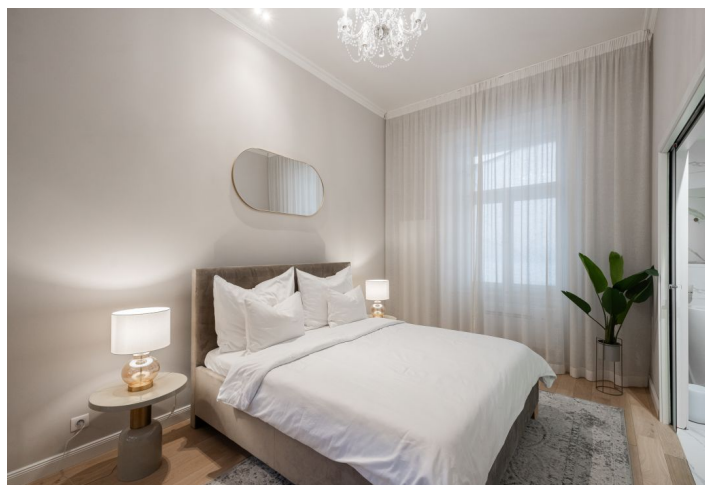




## Apartment One-bedroom (2+kk)

**Sold**

65 m², Prague 1, Staré Město, Haštalská



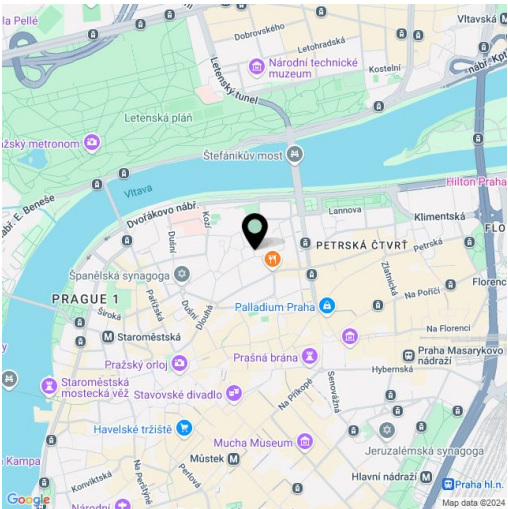


# Apartment One-bedroom (2+kk)

Sold

65 m², Prague 1, Staré Město, Haštalská

Total area	65 m²
Parking	-
Cellar	7 m²
PENB	G
Reference number	106124



\* Size of the unit according to the Housing Act.  
The area consists of the sum total of the internal area of every room.

This elegant apartment, which has been carefully and tastefully reconstructed, is located on the 1st floor of a historic apartment building in an attractive place in the magical Haštalská quarter in Old Town, near Old Town Square and Republic Square.

The apartment with high ceilings is divided into a south-facing living room with a kitchen and dining area, 1 bedroom, a bathroom with a **walk-in shower, designer sink, and solitary bathtub**, a separate toilet (with a sink and a washing machine), and a foyer.

The interior was **expensively renovated in 2022**. The casement windows are original refurbished, the floors are **oak**, the bathroom and toilet have **heated tiles**. The bathroom contains a **ProWell Prestige Line infrared sauna, a Polysan Zasu bathtub, an Alessi designer sink, Keope and Calacatta Gold tiles and tiles and a Gravity Aluminum Cubic Gold mosaic (Porcelanosa)**, in the bedroom is a **ProWell Prestige Line infrared sauna**. A pleasant atmosphere in the living room can be created by the **Dimplex electric fireplace** on water vapor, the element of nobility is added by the **Art Krystal crystal chandeliers**. The tailor-made Italian kitchen was supplied by **Concreta**. Heating is provided by an electric Bosch boiler, the bedroom has **air conditioning**. The house is well maintained, the **elevator** leads to the mezzanines. The apartment has a **cellar**.

The prestigious location of Old Town, near luxurious **Pařížská Street**, offers living within quick reach of restaurants, cafes, shops, theaters, clubs or galleries, churches and synagogues. The **Náměstí Republiky** and **Staroměstská** metro stations and tram stops are nearby. The gardens of the **St. Agnes Monastery** are a peaceful green oasis.

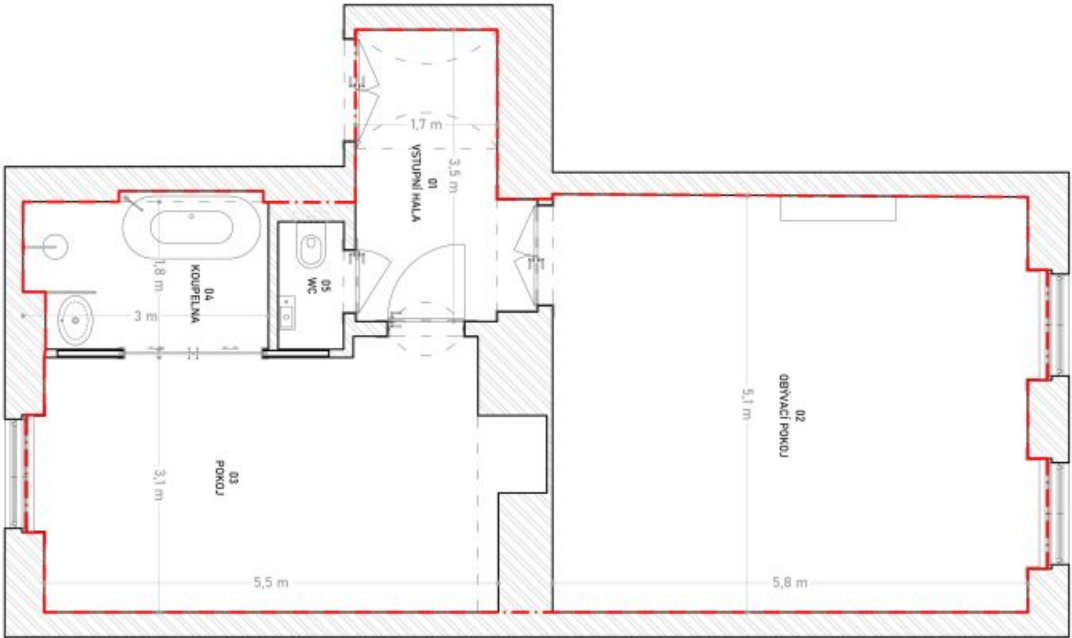
Floor area according to measurement after receonstruction 65 m², cellar 7 m².



# Apartment One-bedroom (2+kk)

65 m², Prague 1, Staré Město, Haštalská

Sold



VÝMĚRY MÍSTNOSTÍ	
Č. M.	POPIS
01	VSTUPNÍ HALA
02	OBÝVACÍ POKOJ
03	POKOJ
04	KOUPELNA
05	WC
ÚŽITNÁ PLOCHA CELKEM (m²)	
PODLAHOVÁ PLOCHA 1NP (m²)	

Úžitná plocha bytové jednotky je stanovena podle Nařízení Komise (ES) č. 1503/2006

Celková podlahová plocha bytové jednotky je stanovena podle Nařízení vlády 366/2013 Sb. § 3.

— ZDĚNÉ STĚNY  
— HRANICE PODLAHOVÉ PLOCHY