



Apartment Three-bedroom (4+1)

Sold

192 m², Prague 1, Nové Město, U Půjčovny





Apartment Three-bedroom (4+1)

Sold

192 m², Prague 1, Nové Město, U Půjčovny

Total area	372 m²
Floor area*	192 m²
Terrace	140 m²
Loggia	40 m²
Parking	2 garage parking spaces
Cellar	Yes
PENB	E
Reference number	106074

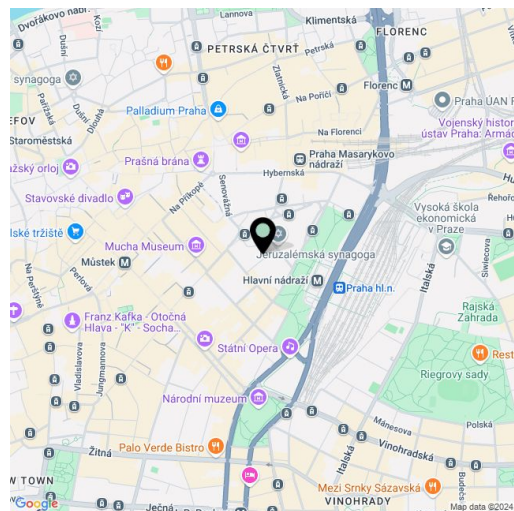
This unique stylish and very private apartment with a large roof terrace, 4 loggias, a sauna, 2 garage spaces, and an elevator leading directly to the apartment is located in the very center of the city, on a quiet side street in New Town near Wenceslas Square.

The practical layout of the apartment, which extends over the entire 5th floor, consists of a **40-meter living space**, a kitchen with a dining room, a master bedroom with an en-suite bathroom and **dressng room**, a 2nd bedroom with an adjoining bathroom, and another room currently used as an office with a possible direct separate entrance. There is also a closet, a separate toilet, an entrance hall, and a foyer. All rooms and the kitchen have access to **one of the four loggias**; the kitchen has a staircase leading to a **wonderful rooftop terrace**. Thanks to the apartment's location on the top floor, the terrace above the level of the surrounding buildings, and the elevator that goes directly to the apartment, **perfect privacy** is ensured.

The Functionalist building from 1936 was **completely renovated** in 2016-2017. High-standard facilities include **oak parquet floors**, **air-conditioning in the whole unit**, wooden windows with triple glazing, security entrance doors, electrically controlled entrance to the roof terrace, and **underfloor heating** supplemented by heated towel rails. The heat source is the building's central boiler. The custom-made kitchen is equipped with **Siemens** appliances, and the curtains and built-in walls come from the workshop of **Pierre Frey in Paris**. **Villeroy & Boch** and **Axor** sanitary ware. On the terrace, there is a sauna and a preparation for an outdoor kitchen. The apartment comes with **4 cellars** and **2 garage spaces** accessible by car elevator.

The building is located right in the center of Prague just a few minutes' walk from **Wenceslas Square**. The nearby **Čelakovského Garden** will soon be extensively revitalized, after which this location will be an even more attractive, pleasant, and dignified place. A **high school** and full civic amenities are in the vicinity, and tram stops and metro stations of all lines are within easy reach.

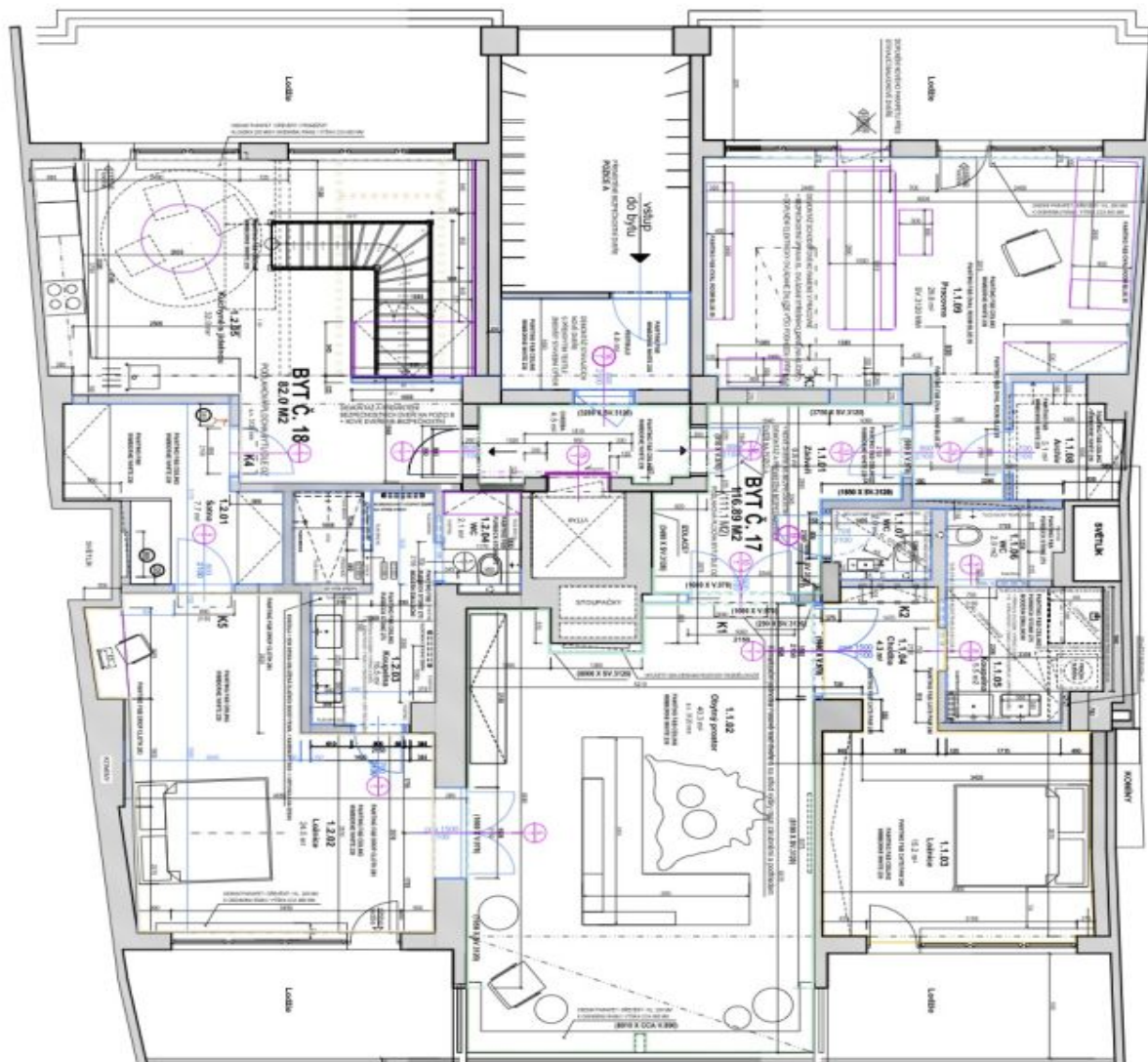
Floor area 193 m², roof terrace 140 m², 4 loggias total 40 m².



* Area of the unit according to the Civil Code. The area consists of the sum total area of the entire unit bounded by perimeter walls.

Sold

192 m², Prague 1, Nové Město, U Půjčovny



Taxonomy method / new tax	
---------------------------	--

code	code	price (€)	position	status	category	parent	parent2
1.1.02	1.1.02	1.0	magazine monthly, A4	has a status	has a status	has a status	has a status
1.1.02	1.1.02	60.3	magazine monthly, A4	has a status	has a status	has a status	has a status
1.1.03	1.1.03	4.2	magazine monthly, A4	has a status	has a status	has a status	has a status
1.1.04	1.1.04	9.2	magazine monthly, A4	has a status	has a status	has a status	has a status
1.1.05	1.1.05	5.5	bulletin	has a status	has a status	has a status	has a status
1.1.06	1.1.06	2.0	bulletin	has a status	has a status	has a status	has a status
1.1.07	1.1.07	2.0	bulletin	has a status	has a status	has a status	has a status
1.1.08	1.1.08	3.1	magazine monthly, A4	has a status	has a status	has a status	has a status
1.1.09	1.1.09	20.0	magazine monthly, A4	has a status	has a status	has a status	has a status
1.1.10							
1.1.11							
1.1.12							
1.1.13							
1.1.14							
1.1.15							
1.1.16							
1.1.17							
1.1.18							
1.1.19							
1.1.20							
1.1.21							
1.1.22							
1.1.23							
1.1.24							
1.1.25							
1.1.26							
1.1.27							
1.1.28							
1.1.29							
1.1.30							
1.1.31							
1.1.32							
1.1.33							
1.1.34							
1.1.35							
1.1.36							
1.1.37							
1.1.38							
1.1.39							
1.1.40							
1.1.41							
1.1.42							
1.1.43							
1.1.44							
1.1.45							
1.1.46							
1.1.47							
1.1.48							
1.1.49							
1.1.50							
1.1.51							
1.1.52							
1.1.53							
1.1.54							
1.1.55							
1.1.56							
1.1.57							
1.1.58							
1.1.59							
1.1.60							
1.1.61							
1.1.62							
1.1.63							
1.1.64							
1.1.65							
1.1.66							
1.1.67							
1.1.68							
1.1.69							
1.1.70							
1.1.71							
1.1.72							
1.1.73							
1.1.74							
1.1.75							
1.1.76							
1.1.77							
1.1.78							
1.1.79							
1.1.80							
1.1.81							
1.1.82							
1.1.83							
1.1.84							
1.1.85							
1.1.86							
1.1.87							
1.1.88							
1.1.89							
1.1.90							
1.1.91							
1.1.92							
1.1.93							
1.1.94							
1.1.95							
1.1.96							
1.1.97							
1.1.98							
1.1.99							
1.1.100							
1.1.101							
1.1.102							
1.1.103							
1.1.104							
1.1.105							
1.1.106							
1.1.107							
1.1.108							
1.1.109							
1.1.110							
1.1.111							
1.1.112							
1.1.113							
1.1.114							
1.1.115							
1.1.116							
1.1.117							
1.1.118							
1.1.119							
1.1.120							
1.1.121							
1.1.122							
1.1.123							
1.1.124							
1.1.125							
1.1.126							
1.1.127							
1.1.128							
1.1.129							
1.1.130							
1.1.131							
1.1.132							
1.1.133							
1.1.134							
1.1.135							
1.1.136							
1.1.137							
1.1.138							
1.1.139							
1.1.140							
1.1.141							
1.1.142							
1.1.143							
1.1.144							
1.1.145							
1.1.146							
1.1.147							
1.1.148							
1.1.149							
1.1.150							
1.1.151							
1.1.152							
1.1.153							
1.1.154							
1.1.155							
1.1.156							
1.1.157							
1.1.158							
1.1.159							
1.1.160							
1.1.161							
1.1.162							
1.1.163							
1.1.164							
1.1.165							
1.1.166							
1.1.167							
1.1.168							
1.1.169							
1.1.170							
1.1.171							
1.1.172							
1.1.173							
1.1.174							
1.1.175							
1.1.176							
1.1.177							
1.1.178							
1.1.179							
1.1.180							
1.1.181							
1.1.182							
1.1.183							
1.1.184							
1.1.185							
1.1.186							
1.1.187							
1.1.188							
1.1.189							
1.1.190							
1.1.191							
1.1.192							
1.1.193							
1.1.194							
1.1.195							
1.1.196							
1.1.197							
1.1.198							
1.1.199							
1.1.200							
1.1.201							
1.1.202							
1.1.203							
1.1.204							
1.1.205							
1.1.206							
1.1.207							
1.1.208							
1.1.209							
1.1.210							
1.1.211							
1.1.212							
1.1.213							
1.1.214							
1.1.215							
1.1.216							
1.1.217							
1.1.218							
1.1.219							
1.1.220							
1.1.221							
1.1.222							
1.1.223							
1.1.224							
1.1.225							
1.1.226							
1.1.227							
1.1.228							
1.1.229							
1.1.230							
1.1.231							
1.1.232							
1.1.233							
1.1.234							
1.1.235							
1.1.236							
1.1.237							
1.1.238							
1.1.239							
1.1.240							
1.1.241							
1.1.242							
1.1.243							
1.1.244							
1.1.245							
1.1.246							
1.1.247							
1.1.248							
1.1.249							
1.1.250							
1.1.251							
1.1.252							
1.1.253							
1.1.254							
1.1.255							
1.1.256							
1.1.257							
1.1.258							
1.1.259							
1.1.260							
1.1.261							
1.1.262							
1.1.263							
1.1.264							
1.1.265							
1.1.266							
1.1.267							
1.1.268							
1.1.269							
1.1.270							
1.1.271							
1.1.272							
1.1.273							
1.1.274							
1.1.275							
1.1.276							

<p> 1. <i>Trachusa mormonia</i> / <i>mormonia</i> </p>
--

category	sub-category	number of patients	gender	age	prostate ref.	prostate ref.	year
1	1.1	10	10	10	10	10	10
	1.2	20	20	20	20	20	20
	1.3	30	30	30	30	30	30
	1.4	40	40	40	40	40	40
	1.5	50	50	50	50	50	50
2	2.1	60	60	60	60	60	60
	2.2	70	70	70	70	70	70
	2.3	80	80	80	80	80	80
	2.4	90	90	90	90	90	90
	2.5	100	100	100	100	100	100
3	3.1	110	110	110	110	110	110
	3.2	120	120	120	120	120	120
	3.3	130	130	130	130	130	130
	3.4	140	140	140	140	140	140
	3.5	150	150	150	150	150	150
4	4.1	160	160	160	160	160	160
	4.2	170	170	170	170	170	170
	4.3	180	180	180	180	180	180
	4.4	190	190	190	190	190	190
	4.5	200	200	200	200	200	200
5	5.1	210	210	210	210	210	210
	5.2	220	220	220	220	220	220
	5.3	230	230	230	230	230	230
	5.4	240	240	240	240	240	240
	5.5	250	250	250	250	250	250
6	6.1	260	260	260	260	260	260
	6.2	270	270	270	270	270	270
	6.3	280	280	280	280	280	280
	6.4	290	290	290	290	290	290
	6.5	300	300	300	300	300	300
7	7.1	310	310	310	310	310	310
	7.2	320	320	320	320	320	320
	7.3	330	330	330	330	330	330
	7.4	340	340	340	340	340	340
	7.5	350	350	350	350	350	350
8	8.1	360	360	360	360	360	360
	8.2	370	370	370	370	370	370
	8.3	380	380	380	380	380	380
	8.4	390	390	390	390	390	390
	8.5	400	400	400	400	400	400
9	9.1	410	410	410	410	410	410
	9.2	420	420	420	420	420	420
	9.3	430	430	430	430	430	430
	9.4	440	440	440	440	440	440
	9.5	450	450	450	450	450	450
10	10.1	460	460	460	460	460	460
	10.2	470	470	470	470	470	470
	10.3	480	480	480	480	480	480
	10.4	490	490	490	490	490	490
	10.5	500	500	500	500	500	500
11	11.1	510	510	510	510	510	510
	11.2	520	520	520	520	520	520
	11.3	530	530	530	530	530	530
	11.4	540	540	540	540	540	540
	11.5	550	550	550	550	550	550
12	12.1	560	560	560	560	560	560
	12.2	570	570	570	570	570	570
	12.3	580	580	580	580	580	580
	12.4	590	590	590	590	590	590
	12.5	600	600	600	600	600	600
13	13.1	610	610	610	610	610	610
	13.2	620	620	620	620	620	620
	13.3	630	630	630	630	630	630
	13.4	640	640	640	640	640	640
	13.5	650	650	650	650	650	650
14	14.1	660	660	660	660	660	660
	14.2	670	670	670	670	670	670
	14.3	680	680	680	680	680	680
	14.4	690	690	690	690	690	690
	14.5	700	700	700	700	700	700
15	15.1	710	710	710	710	710	710
	15.2	720	720	720	720	720	720
	15.3	730	730	730	730	730	730
	15.4	740	740	740	740	740	740
	15.5	750	750	750	750	750	750
16	16.1	760	760	760	760	760	760
	16.2	770	770	770	770	770	770
	16.3	780	780	780	780	780	780
	16.4	790	790	790	790	790	790
	16.5	800	800	800	800	800	800
17	17.1	810	810	810	810	810	810
	17.2	820	820	820	820	820	820
	17.3	830	830	830	830	830	830
	17.4	840	840	840	840	840	840
	17.5	850	850	850	850	850	850
18	18.1	860	860	860	860	860	860
	18.2	870	870	870	870	870	870
	18.3	880	880	880	880	880	880
	18.4	890	890	890	890	890	890
	18.5	900	900	900	900	900	900
19	19.1	910	910	910	910	910	910
	19.2	920	920	920	920	920	920
	19.3	930	930	930	930	930	930
	19.4	940	940	940	940	940	940
	19.5	950	950	950	950	950	950
20	20.1	960	960	960	960	960	960
	20.2	970	970	970	970	970	970
	20.3	980	980	980	980	980	980
	20.4	990	990	990	990	990	990
	20.5	1000	1000	1000	1000	1000	1000
21	21.1	1010	1010	1010	1010	1010	1010
	21.2	1020	1020	1020	1020	1020	1020
	21.3	1030	1030	1030	1030	1030	1030
	21.4	1040	1040	1040	1040	1040	1040
	21.5	1050	1050	1050	1050	1050	1050
22	22.1	1060	1060	1060	1060	1060	1060
	22.2	1070	1070	1070	1070	1070	1070
	22.3	1080	1080	1080	1080	1080	1080
	22.4	1090	1090	1090	1090	1090	1090
	22.5	1100	1100	1100	1100	1100	1100
23	23.1	1110	1110	1110	1110	1110	1110
	23.2	1120	1120	1120	1120	1120	1120
	23.3	1130	1130	1130	1130	1130	1130
	23.4	1140	1140	1140	1140	1140	1140
	23.5	1150	1150	1150	1150	1150	1150
24	24.1	1160	1160	1160	1160	1160	1160
	24.2	1170	1170	1170	1170	1170	1170
	24.3	1180	1180	1180	1180	1180	1180
	24.4	1190	1190	1190	1190	1190	1190
	24.5	1200	1200	1200	1200	1200	1200
25	25.1	1210	1210	1210	1210	1210	1210
	25.2	1220	1220	1220	1220	1220	1220
	25.3	1230	1230	1230	1230	1230	1230
	25.4	1240	1240	1240	1240	1240	1240
	25.5	1250	1250	1250	1250	1250	1250
26	26.1	1260	1260	1260	1260	1260	1260
	26.2	1270	1270	1270	1270	1270	1270
	26.3	1280	1280	1280	1280	1280	1280
	26.4	1290	1290	1290	1290	1290	1290
	26.5	1300	1300	1300	1300	1300	1300
27	27.1	1310	1310	1310	1310	1310	1310
	27.2	1320	1320	1320	1320	1320	1320
	27.3	1330	1330	1330	1330	1330	1330
	27.4	1340	1340	1340	1340	1340	1340
	27.5	1350	1350	1350	1350	1350	1350
28	28.1	1360	1360	1360	1360	1360	1360
	28.2	1370	1370	1370	1370	1370	1370
	28.3	1380	1380	1380	1380	1380	1380
	28.4	1390	1390	1390	1390	1390	1390
	28.5	1400	1400	1400	1400	1400	1400
29	29.1	1410	1410	1410	1410	1410	1410
	29.2	1420	1420	1420	1420	1420	1420
	29.3	1430	1430	1430	1430	1430	1430
	29.4	1440	1440	1440	1440	1440	1440
	29.5	1450	1450	1450	1450	1450	1450
30	30.1	1460	1460	1460	1460	1460	1460
	30.2	1470	1470	1470	1470	1470	1470
	30.3	1480	1480	1480	1480	1480	1480
	30.4	1490	1490	1490	1490	1490	1490
	30.5	1500	1500	1500	1500	1500	1500
31	31.1	1510	1510	1510	1510	1510	1510
	31.2	1520	1520	1520	1520	1520	1520
	31.3	1530	1530	1530	1530	1530	1530
	31.4	1540	1540	1540	1540	1540	1540
	31.5	1550	1550	1550	1550	1550	1550
32	32.1	1560	1560	1560	1560	1560	1560
	32.2	1570	1570	1570	1570	1570	1570
	32.3	1580	1580	1580	1580	1580	1580
	32.4	1590	1590	1590	1590	1590	1590
	32.5	1600	1600	1600	1600	1600	1600
33	33.1	1610	1610	1610	1610	1610	1610
	33.2	1620	1620	1620	1620	1620	1620
	33.3	1630	1630	1630	1630	1630	1630
	33.4	1640	1640	1640	1640	1640	1640
	33.5	1650	1650	1650	1650	1650	1650
34	34.1	1660	1660	1660	1660	1660	1660
	34.2	1670	1670	1670	1670	1670	1670
	34.3	1680	1680	1680	1680	1680	1680
	34.4	1690	1690	1690	1690	1690	1690
	34.5	1700	1700	1700	1700	1700	1700
35	35.1	1710	1710	1710	1710	1710	1710
	35.2	1720	1720	1720	1720	1720	1720
	35.3	1730	1730	1730	1730	1730	1730
	35.4	1740	1740	1740	1740	1740	1740
	35.5	1750	1750	1750	1750	1750	1750
36	36.1	1760	1760	1760	1760	1760	1760
	36.2	1770	1770	1770	1770	1770	1770
	36.3	1780	1780	1780	1780	1780	1780
	36.4	1790	1790	1790	1790	1790	1790
	36.5	1800	1800	1800	1800	1800	1800
37	37.1	1810	1810	1810	1810	1810	1810
	37.2	1820	1820	1820	1820	1820	1820
	37.3	1830	1830	1830	1830	1830	1830
	37.4	1840	1840	1840	1840	1840	1840
	37.5	1850	1850	1850	1850	1850	1850
38	38.1	1860	1860	1860	1860	1860	1860
	38.2	1870	1870	1870	1870	1870	1870
	38.3	1880	1880	1880	1880	1880	1880
	38.4	1890	1890	1890	189		

- **disadvantages** - (power) and **electronic systems** which

...and be a successful scientist - they really must be willing to work as if their work was important.