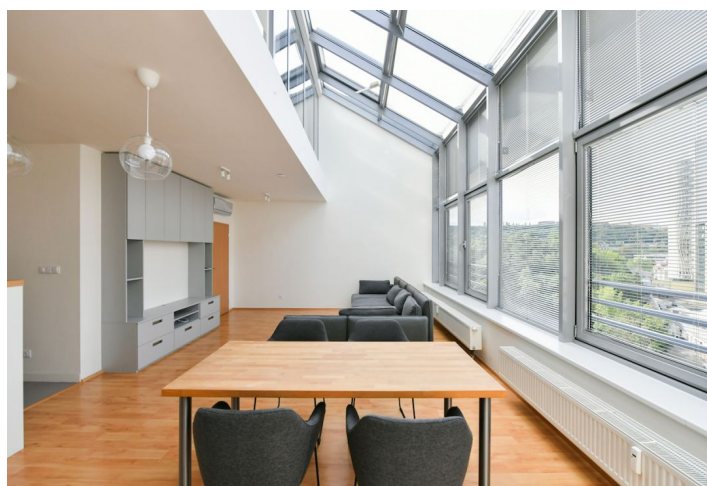
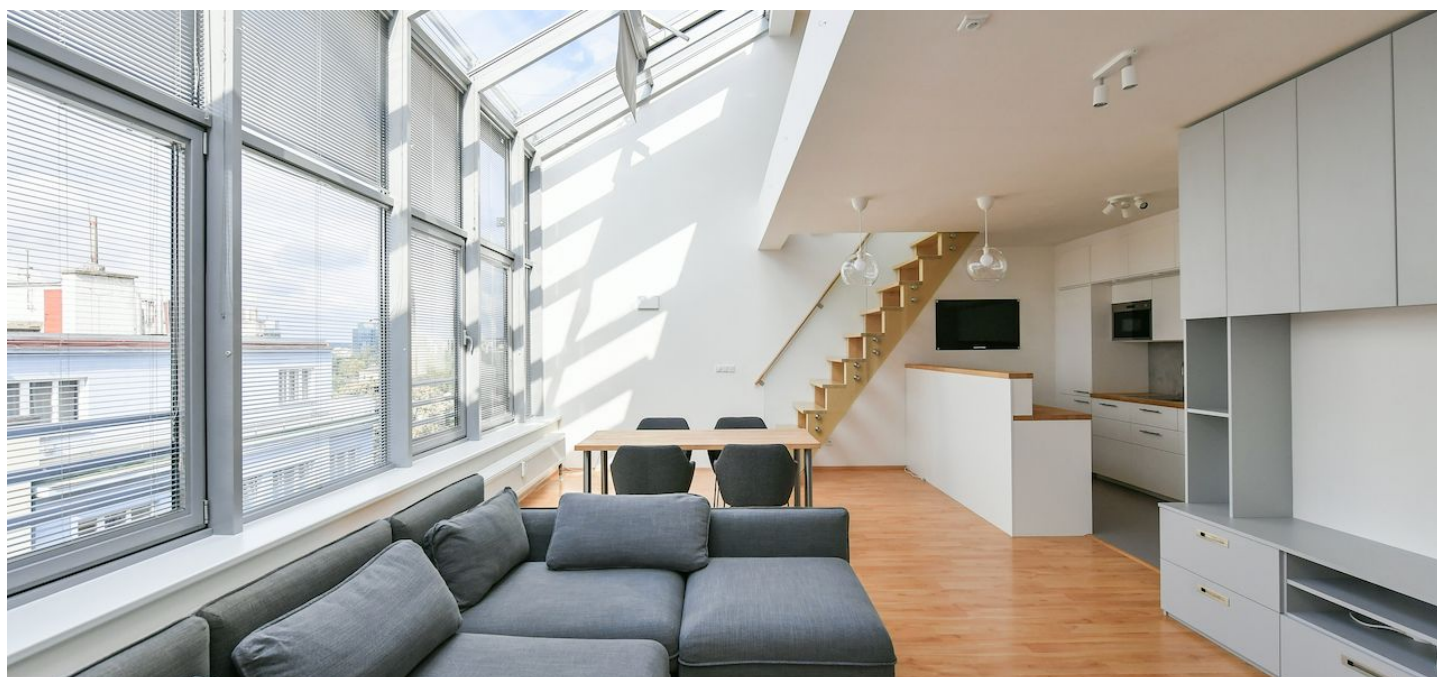




Apartment Two-bedroom (3+kk)

€ 1 523 | CZK 37 000

99 m², Prague 8, Libeň, Na kopečku





Apartment Two-bedroom (3+kk)

€ 1 523 | CZK 37 000

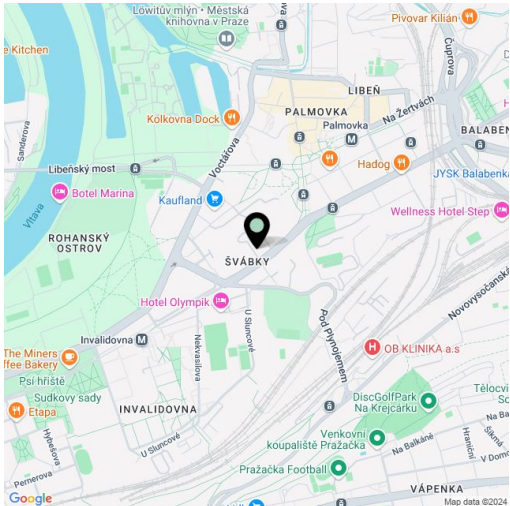
99 m², Prague 8, Libeň, Na kopečku

Total area	99 m²
Parking	-
Cellar	-
Service price	Monthly deposit for services, water, and heating: CZK 8,500. Electricity is billed separately (transferred to the tenant).
PENB	C
Reference number	106030
Available from	08.04.2026

This atypical partially furnished 2-bathroom split-level apartment is situated on the 6th topmost floor of a residential building with an elevator, on the edge of a local park. Located in a quiet part of Prague 8 with quick connections to the city center and full amenities in the area, within walking distance of the Palmovka and Invalidovna metro stations and trams. A driving range and tennis courts are nearby.

The lower level offers a living room with a dining area and a fully fitted open plan kitchen, a toilet, and an entrance hall with built-in storage. The upper floor includes a gallery, a bedroom with an en-suite bathroom (walk-in shower), and a bedroom with a built-in wardrobe and an en-suite bathroom (walk-in shower, toilet).

Far-reaching views, **air-conditioning**, laminate floors, tiles, casement windows, blinds, roller blinds, central heating, washer, dryer, dishwasher, induction stove top, wine fridge, microwave oven.



* Size of the unit according to the Housing Act.
The area consists of the sum total of the internal area of every room.