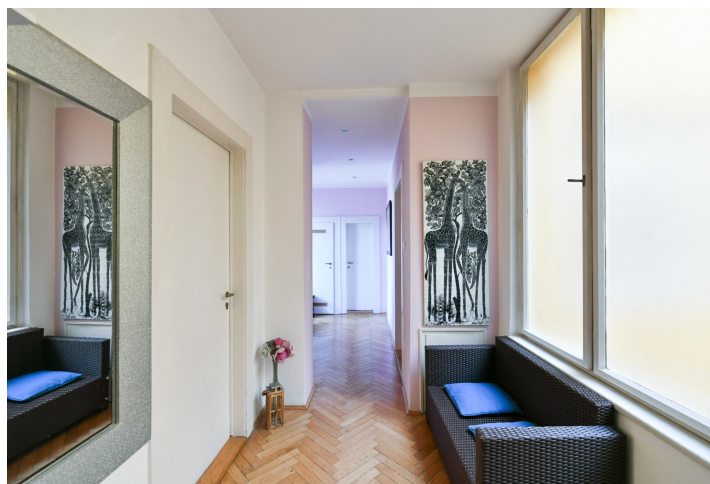




Apartment Two-bedroom (3+kk)

Rented

90 m², Prague 1, Staré Město, Revoluční





Apartment Two-bedroom (3+kk)

Rented

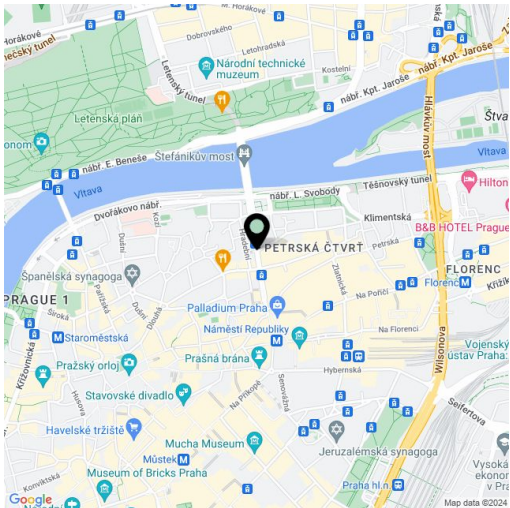
90 m², Prague 1, Staré Město, Revoluční

Total area	107 m²
Floor area*	90 m²
Terrace	17 m²
Parking	-
Cellar	-
Service price	Services and utilities in the amount of CZK 7,000/month are billed separately.
PENB	Not required
Reference number	105927
Available from	Immediately

This furnished renovated apartment with a terrace offering beautiful views of the Prague Castle and Petřín Hill is situated on the 6th floor of a well-maintained renovated Functionalist building with a new elevator and a shared roof terrace with panoramic views of Prague. Located just a few steps away from Republic Square, within easy reach of complete amenities incl. the Palladium and Kotva shopping malls, the Divadlo v Dlouhé Theater, quality restaurants, cafes, and clubs. The Náměstí Republiky metro station (line B) is just a two-minute walk away, there is a tram stop mere steps from the building, and it is only a short walk to Lannova Park, the courtyard garden in the Convent of St. Agnes, and Letná Park on the opposite bank of the Vltava River.

The interior features a living room with a fully fitted open plan kitchen, a dining area and access to the terrace, 2 bedrooms facing a quiet courtyard, a large shared bathroom (massage bathtub, walk-in shower), a separate toilet, a utility/storage room, and an entrance hall.

Preserved original features, hardwood parquet floors, tiles, built-in wardrobe in one bedroom, exterior roller blinds, gas boiler, washing machine, dishwasher, microwave oven, TV, shared roof terrace.



* Size of the unit according to the Housing Act.
The area consists of the sum total of the internal area of every room.