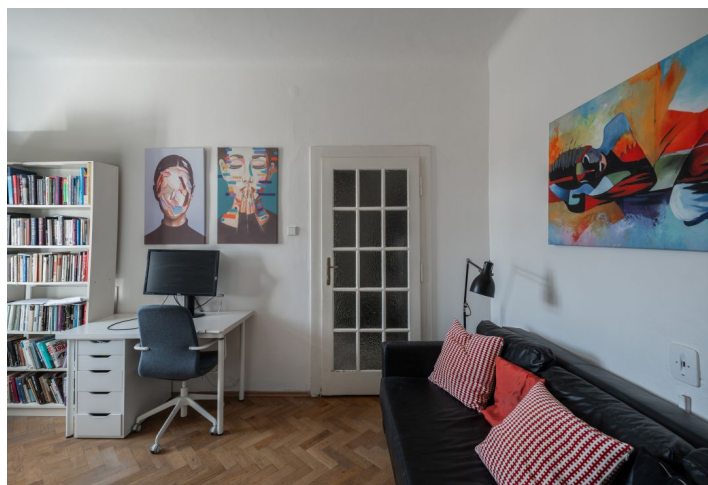




Apartment One-bedroom (2+1)

48.1 m², Prague 7, Holešovice, Schnirchova

Sold



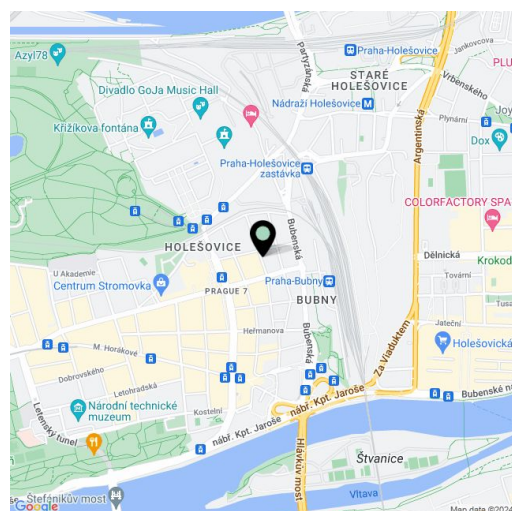


Apartment One-bedroom (2+1)

Sold

48.1 m², Prague 7, Holešovice, Schnirchova

Total area	48 m²
Parking	-
Cellar	Yes
PENB	G
Reference number	105876



* Area of the unit according to the Civil Code. The area consists of the sum total area of the entire unit bounded by perimeter walls.

This quiet, bright apartment located on the 6th floor of a completely revitalized building with an elevator and a modern cafe on the ground floor is located in a sought-after part of Prague 7 - Holešovice, a few minutes' walk from the Stromovka Royal Nature Reserve.

The interior consists of a kitchen, 2 rooms, a bathroom, a separate toilet, and a storage room located directly opposite the entrance door. Windows from all the rooms offer **views of the quiet courtyard**. The apartment is in its original condition, suitable for reconstruction, with the possibility of modifying the layout. At the same time as the sale of the apartment, which is in **personal ownership**, there will also be a transfer of a share in a housing cooperative, which owns the non-residential space (café) on the ground floor and thus contributes financially to the **repair fund**.

In the neighborhood, the **modernization** of the Praha-Bubny railway station is underway, after the completion of which a new **Praha-Výstaviště** station and a green route for pedestrians and cyclists connecting this popular part of the city with **Stromovka** will be created. In September of this year, the pedestrian **connection between Letná and Holešovice** (the newly created Nicholas Winton street connecting Veletržní street with Dělnická) was ceremonially opened, shortening the walk to the popular **Holešovice market** to just 15 minutes.

The location also stands out for its range of civic amenities, a new shopping center, a number of restaurants and cafes and, last but not least, a wide range of cultural and sports activities. The park itself is a **green oasis** in the middle of the capital. Perfect transport connections are ensured by the nearby **tunnel complex** and excellent public transport accessibility (tram and bus stop within 200 m from the building, **Vltavská** metro station 800 m).

Floor area 48.1 m², cellar 4.7 m².



Apartment One-bedroom (2+1)

48.1 m², Prague 7, Holešovice, Schnirchova

Sold

Holešovice, Schnirchova

Byt 2+1

- 1 Kuchyň
- 2 WC
- 3 Koupelna
- 4 Pokoj
- 5 Pokoj
- 6 Komora

