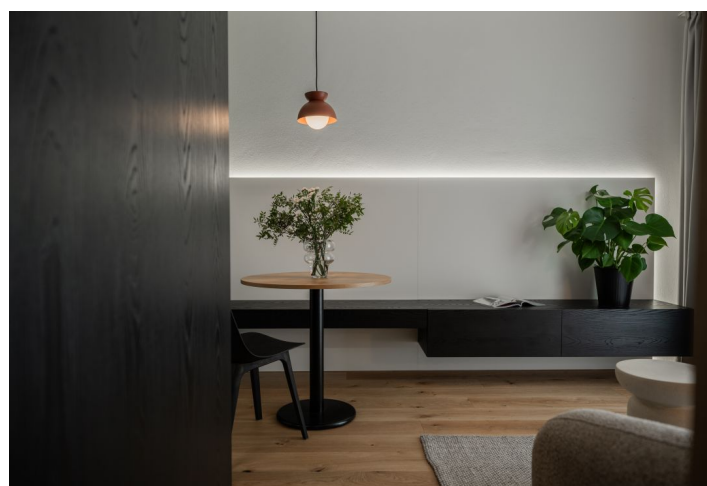
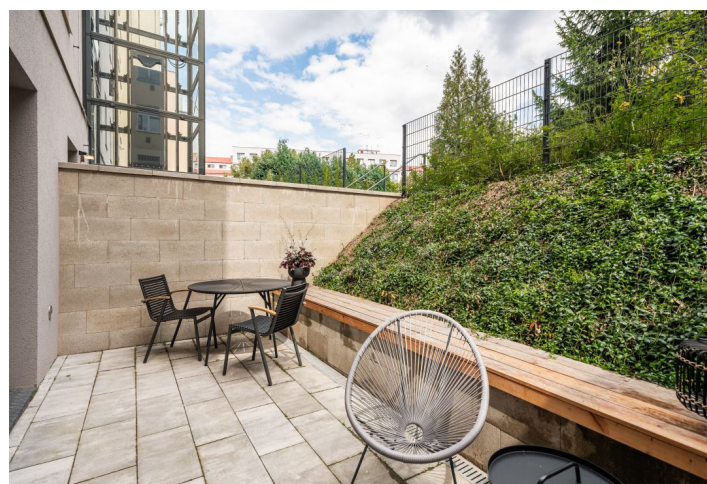
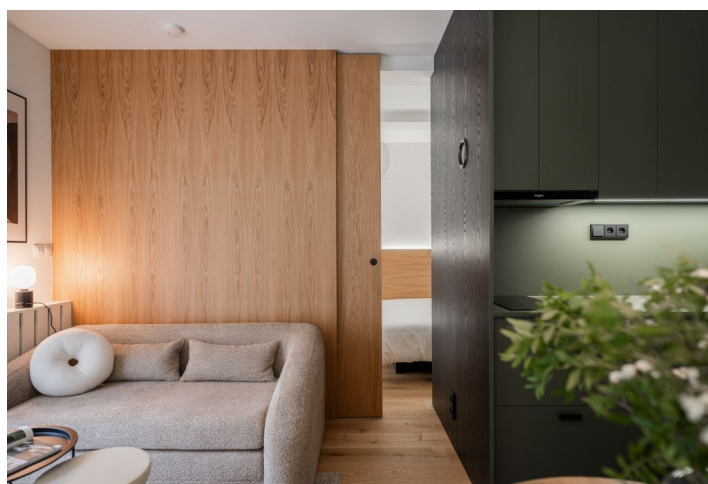




## Apartment One-bedroom (2+kk)

€ 1 171 | CZK 28 500

38.3 m², Prague 6, Dejvice, Studentská





# Apartment One-bedroom (2+kk)

€ 1 171 | CZK 28 500

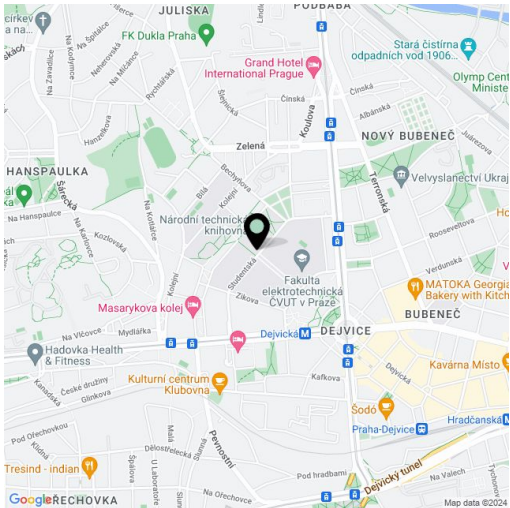
38.3 m², Prague 6, Dejvice, Studentská

Total area	53 m²
Floor area*	38 m²
Terrace	14 m²
Parking	-
Cellar	2 m²
Service price	Monthly deposit for services, water, and heating: CZK 3,500. Electricity is billed separately.
PENB	Not required
Reference number	105645
Available from	Immediately

This furnished designer apartment is situated on the lower ground floor of the BackYard Dejvice Residence, a fully renovated historic building with an elevator and nicely landscaped courtyard with an attractive address in a sought-after area just a minute's walk from the Dejvická metro station on Vítězné Square, tram and bus stops, and the so-called "Green belt of Dejvice" with several parks connecting the area to Stromovka Park. A popular residential location with full amenities and services and excellent transport links both to the city center and the Václav Havel Airport. The Czech Technical University campus is just around the corner.

The interior features a living room with a fully fitted open plan kitchen and a dining area, a bedroom with built-in wardrobes, a bathroom (walk-in shower, toilet), and an entrance hall with a built-in wardrobe. The terrace is accessible from the living room and the bedroom.

**Hardwood floors**, tiles, central heating, dishwasher, induction stove top, cellar, shared laundry room.



\* Area of the unit according to the Civil Code. The area consists of the sum total area of the entire unit bounded by perimeter walls.