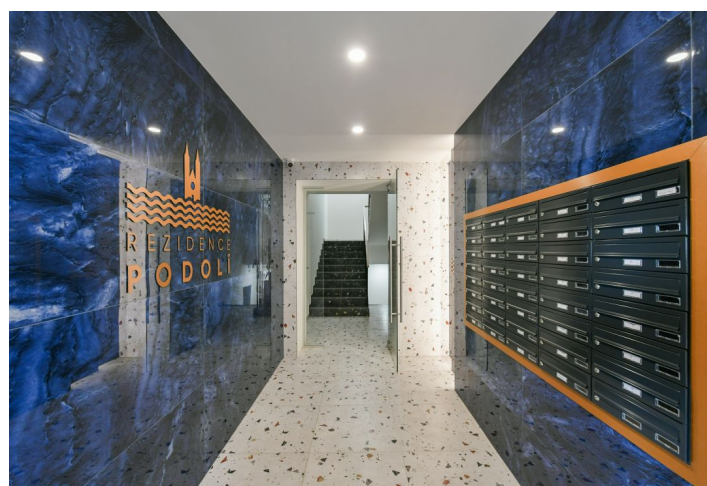
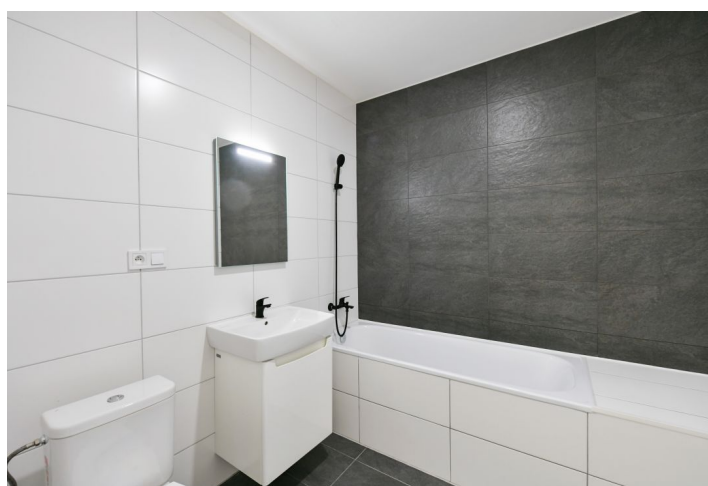
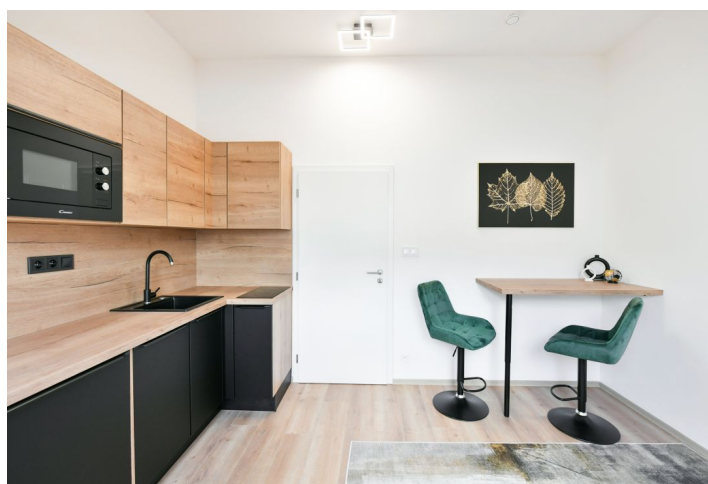




Apartment Studio (1+kk)

28 m², Prague 4, Podolí, Sinkulova

Rented





Apartment Studio (1+kk)

Rented

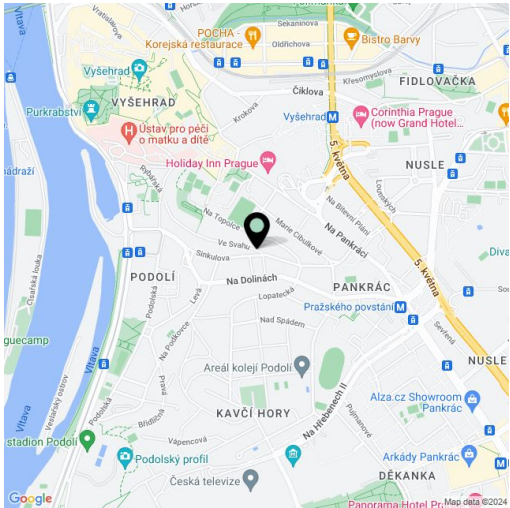
28 m², Prague 4, Podolí, Sinkulova

Total area	28 m²
Parking	-
Garage	Yes
Cellar	-
Service price	Monthly deposit for services, water, and heating: CZK 3,500. Electricity is billed separately (transferred to the tenant).
PENB	D
Reference number	105265
Available from	31.08.2026

This completely refurbished and fully furnished attic studio apartment is on the 4th topmost floor of a renovated apartment building—a modern residence with an elevator. Located in a popular green residential part of Podolí near the Vltava River, Podolí embankment, and Vyšehrad Castle, moments from a tram and bus stop. Complete amenities and services are available within easy reach including numerous sports facilities, e.g. the Podolí and Žluté lázně swimming pools and a popular bike trail along the Vltava River.

The interior features a living room/bedroom with a fully fitted open plan kitchen, a bathroom with a bathtub and toilet, and an entrance hall with a fitted walk-in closet.

Laminate floors, tiles, central heating, dishwasher, microwave oven.



* Size of the unit according to the Housing Act.
The area consists of the sum total of the internal area of every room.