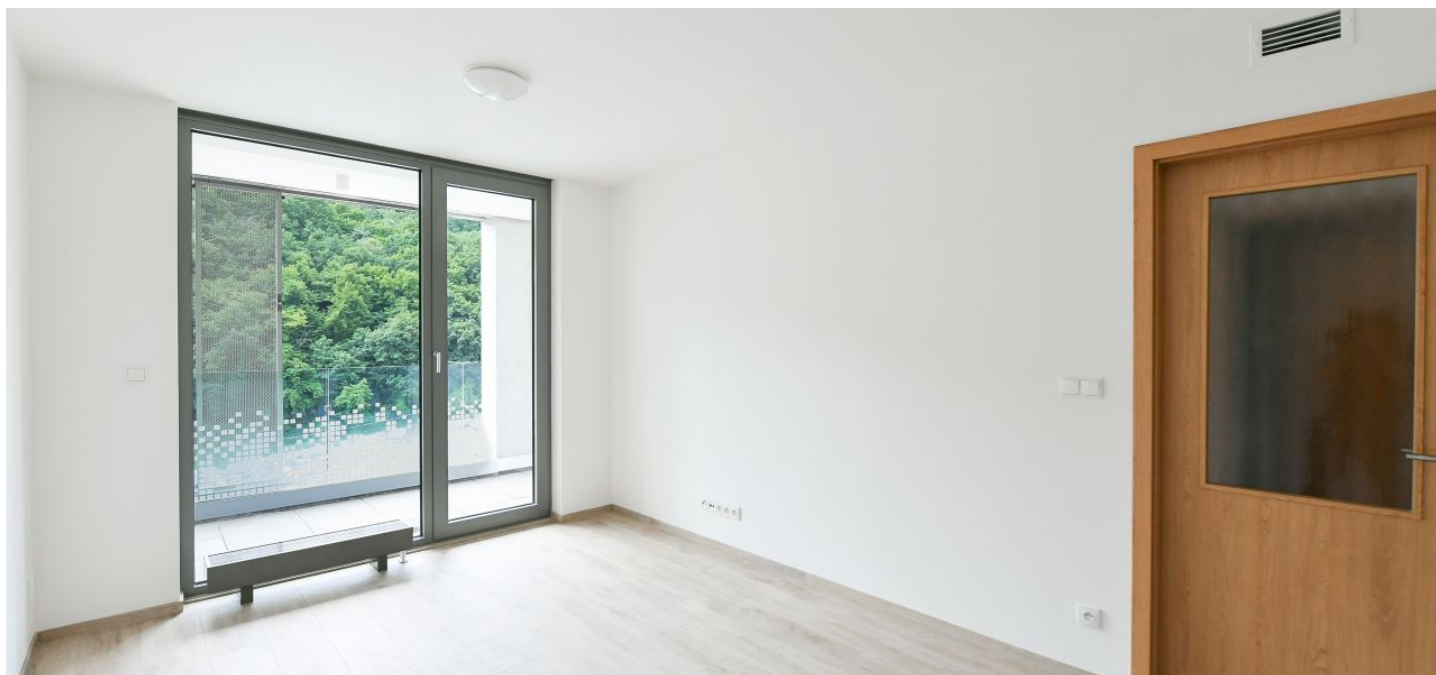




Apartment Two-bedroom (3+kk)

Rented

58.7 m², Prague 5, Košíře, Hlaváčkova





Apartment Two-bedroom (3+kk)

Rented

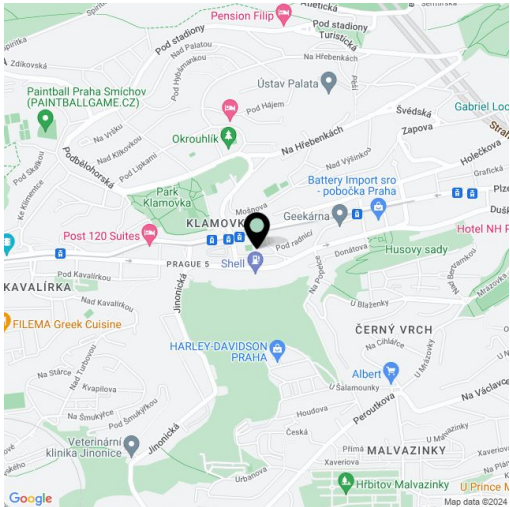
58.7 m², Prague 5, Košíře, Hlaváčkova

Total area	69 m²
Floor area*	59 m²
Loggia	10 m²
Parking	Garage parking
Garage	Yes
Cellar	Yes
Service price	Monthly deposit for services, water, and heating: CZK 4,500. Electricity is billed separately.
PENB	B
Reference number	105213
Available from	01.09.2026

This unfurnished apartment with an enclosed balcony is on the 5th floor of the contemporary Prachnerova Residence with a camera system, underground parking, and a Lidl supermarket on the ground floor. The building is situated in Košíře, Prague 5, just a minute's walk from a tram stop, near a local forest park, Klamovka Park, and Husovy Sady Park, with rich amenities in close vicinity. Located five minutes by car from the Nový Smíchov commercial and entertainment center and the Anděl metro station.

The apartment includes a living room with a fully fitted open plan kitchen and dining area, 2 bedrooms, a bathroom with a bathtub, a separate toilet, and an entrance hall. The **enclosed balcony** is accessible from the living room and one bedroom.

Vinyl floors, tiles, security entry door, central heating, dishwasher, induction cooktop, microwave oven, storage room on the enclosed balcony, **cellar**, chip entry to the building. A **garage parking** space is included.



* Area of the unit according to the Civil Code. The area consists of the sum total area of the entire unit bounded by perimeter walls.