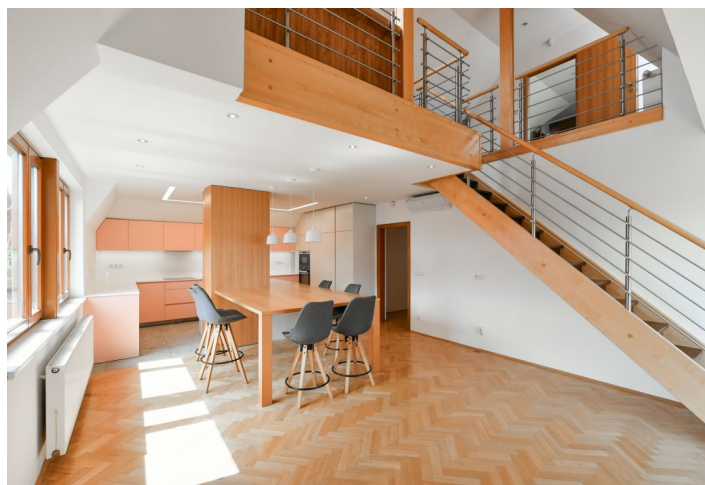




Apartment Four-bedroom (5+kk)

Rented

161 m², Prague 7, Troja, Trojská





Apartment Four-bedroom (5+kk)

Rented

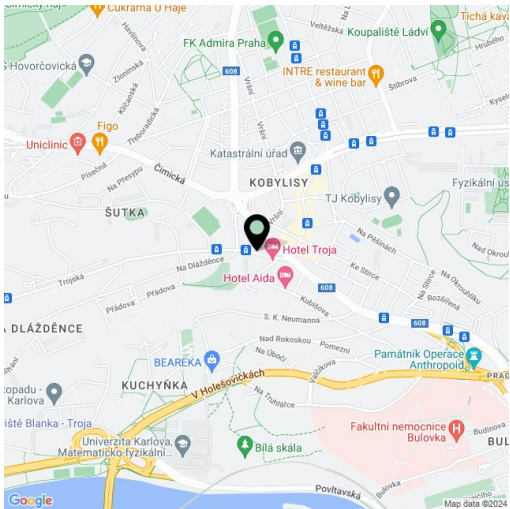
161 m², Prague 7, Troja, Trojská

Total area	186 m²
Floor area*	161 m²
Terrace	25 m²
Parking	Two garage parking spaces.
Garage	Yes
Cellar	Yes
Service price	Monthly deposit for service charges, water and heating: CZK 8,000. Electricity is billed separately.
PENB	C
Reference number	104970
Available from	Immediately

This unfurnished split-level apartment with 2 terraces, on the second topmost floor in the Troja gated residential complex with a landscaped garden and underground parking, is situated in a quiet area mere steps from the Vltava riverbank, close to the Prague ZOO and Troja Chateau, near the Botanical Garden, and across the river from Stromovka Park. Numerous sports facilities and a popular bike path along the Vltava River are near the residence. The city center can be reached within 15 minutes, and transport connections are provided by bus links to the Nádraží Holešovice metro station (line C). The entrance to the Blanka tunnel complex is nearby.

The lower level includes a living room with a fully fitted open plan kitchen and dining area, three bedrooms with **terrace** access (one bedroom is currently used as a walk-in closet), a bathroom (bathtub, walk-in shower), a separate toilet, and an entrance hall with a built-in wardrobe. The upper floor features an open gallery, a master bedroom with an en-suite bathroom (walk-in shower, toilet), and a second **terrace**.

Air-conditioning, hardwood floors, tiles, security entry door, automatic exterior roller blinds, central heating, dishwasher, induction cooktop, microwave oven, alarm, 25 m² **cellar**. **Two garage parking spaces** are included.



* Size of the unit according to the Housing Act.
The area consists of the sum total of the internal area of every room.