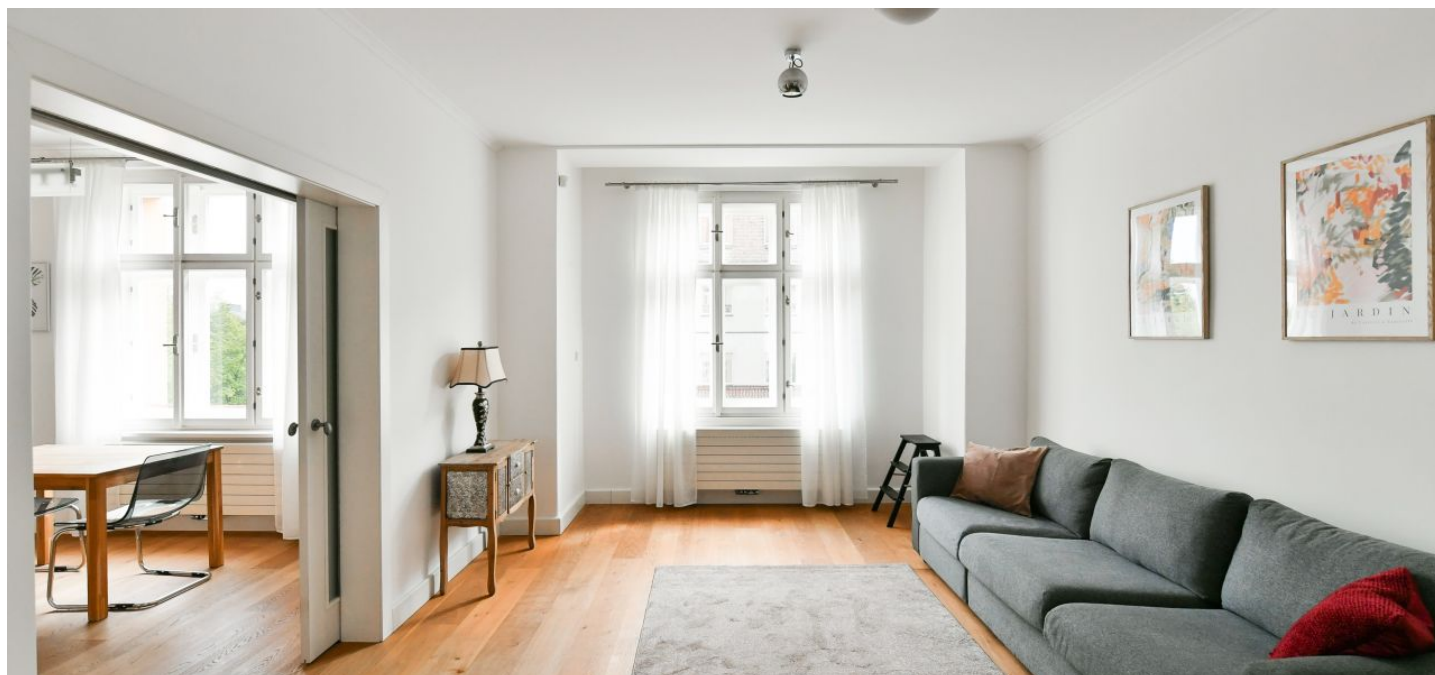




Apartment One-bedroom (2+1)

75 m², Prague 6, Bubeneč, Terronská

Rented





Apartment One-bedroom (2+1)

Rented

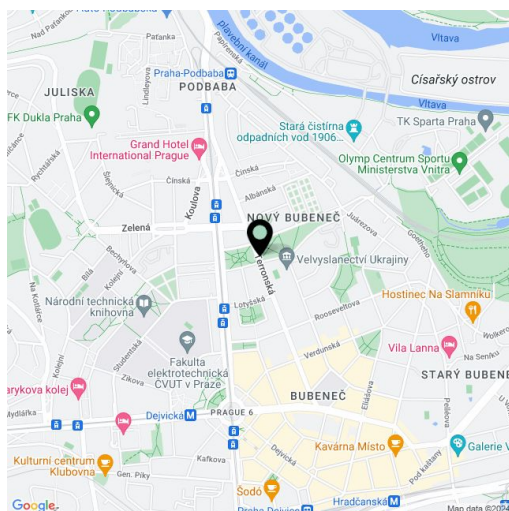
75 m², Prague 6, Bubeneč, Terronská

Total area	75 m²
Parking	-
Cellar	-
Service price	Monthly deposit for service charges and utilities: CZK 6,000.
PENB	G
Reference number	104820
Available from	Immediately

This completely furnished apartment is on the 1st floor of a well-maintained residential building with an elevator, beautifully located on a quiet street in a Prague 6 neighborhood just minutes from the Dejvická metro station (6 min. to the city center) with full amenities in the area, a short walk from the Technical University Campus and the largest park in Prague, Stromovka. Conveniently located for international schools in Prague 6 and the airport.

The apartment includes a living room, a fully fitted kitchen with a dining area, a bedroom with an en-suite bathroom (bathtub, walk-in shower), a separate toilet, and an entrance hall with built-in wardrobes.

Wooden floating floors, tiles, sofabed, gas boiler, washing machine, dishwasher, microwave oven.



* Size of the unit according to the Housing Act.
The area consists of the sum total of the internal area of every room.