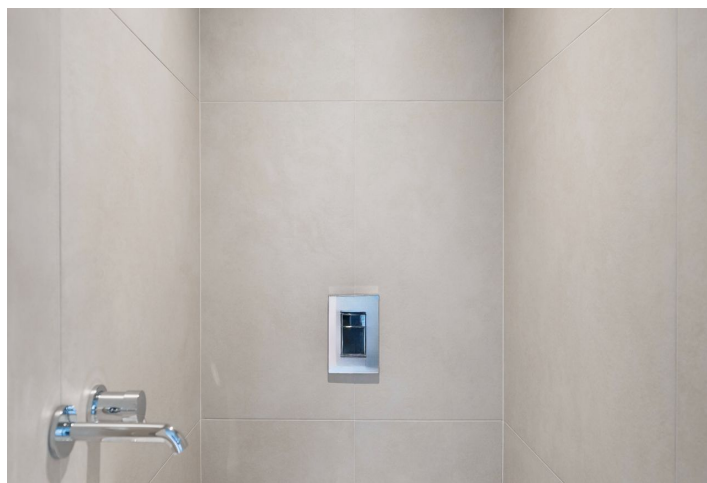




Apartment One-bedroom (2+kk)

Sold

37.5 m², Prague 4, Nusle, Boleslavova





Apartment One-bedroom (2+kk)

Sold

37.5 m², Prague 4, Nusle, Boleslavova

Total area	38 m²
Parking	-
Cellar	-
PENB	C
Reference number	104693

This amazingly bright apartment is located on the 2nd floor of a boutique residential project with 15 unique units and creatively designed common areas. Originally a tenement apartment building from the 1930s, it is nestled in a green part of Prague 4 - Nusle, not far from the city center, which is excellently accessible by public transport and along a bike on a safe bike path. Expected completion by the end of 2024.

The area of the apartment consists of a living room with a preparation for a kitchen, a bedroom, a bathroom (**walk-in shower**), separate toilet, and a foyer with space for a built-in wardrobe. Both rooms have **south-facing** windows overlooking a **quiet garden** with **mature greenery**.

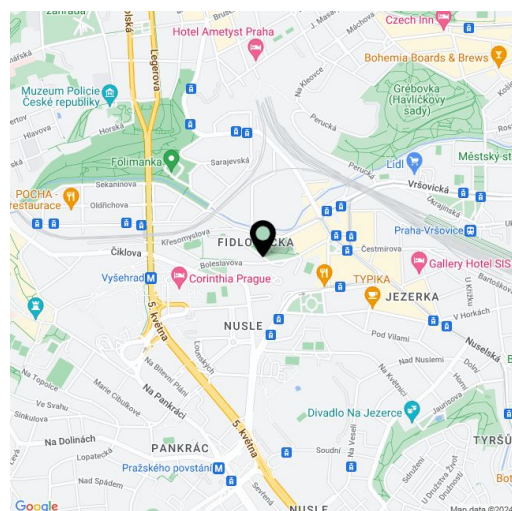
The units in the project are divided into **six collections**. This particular apartment is part of the **Josephine collection**. Facilities include **high-quality LVT floors** in a wooden decor and properties, large-format wall and floor tiles combined with **mosaic tiles in neutral earth tones**, **Laufen and Kartell by Laufen** sanitary ware, **Grohe Essence** chrome faucets including concealed ones, a designer P.M.H. Rosendahl heated towel rail, **custom-made** entry doors and **Sapeli** interior sliding doors.

This **very pleasant neighborhood** is nestled between the **Na Fidlovačce** and **Křesomyslův Hájíček** parks, and **Folimanka Park** with sports fields and the large green areas of **historic Vyšehrad** are nearby. Several cafés and **sports and wellness** centers are located on the **26th floor** of the Corinthia Hotel, only a short distance from the residence, and the range of services in the area will be further expanded by the future **Nuselský Pivovar residential project**. There is a tram stop just a few steps away, and the Vyšehrad metro station (line C) and Náměstí Bratří Synků Square (where a line D metro station will be built) are within easy walking distance.

Floor area 37.5 m².

Possibility to purchase a storage space at extra cost.

For more information, please visit the project website www.boleslavova3.cz.



* Area of the unit according to the Civil Code. The area consists of the sum total area of the entire unit bounded by perimeter walls.

Sold

37.5 m², Prague 4, Nusle, Boleslavova

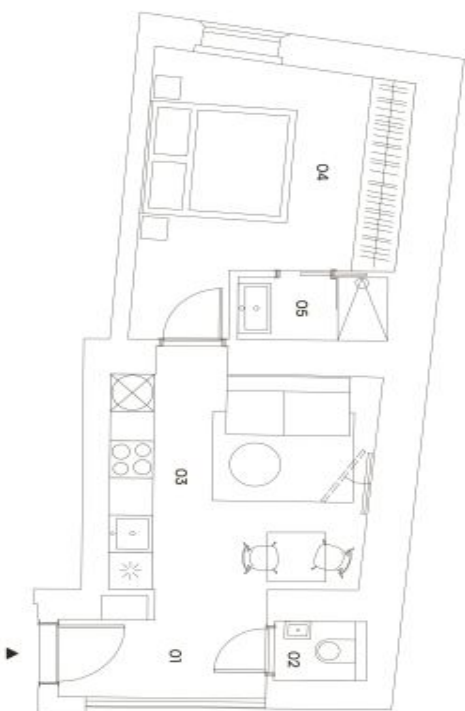


**CastleRock
Investments**

KOLEKCE BOUTIQUE LIVING

JOSEPHINE

JOSEPHINE JE CHYTŘE ŘEŠENÝ APARTMÁN S VELKÝMI FRANCOUZSKÝMI OKNY, KTERÉ DOVNITŘ PROPUSŤEJÍ PÁPRSKY SLUNCE PO CELÝ ROK.



309

 $2+k\bar{k}$

3. podlaží

37,5 m²

Umístění v budově



Prehľad ploch

01	pieteliņš	3,7 m
02	we	1 m
03	kuchytā + dāvyaci pokoj	13,6 m
04	izlīnīce	13,2 m
05	koopelma	2,1 m
	uzlīna plocha	33,6 m

Světlo konstrukce

Podlahová plocha

Celková plocha	37,5 m ²
----------------	---------------------

Technologie

Podľaňové vytlačení

Medford, NJ 08055; e-mail: gschulz@medford.edu; phone: 908/261-9114; fax: 908/261-9115.

exklusivni zastupnici
svobodawilliams | CHRISTIE'S
milano@swi.it, 02 7071