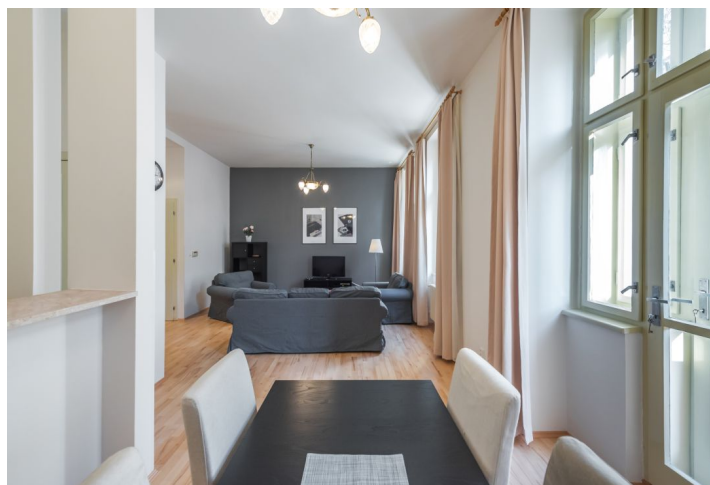




## Apartment Two-bedroom (3+1)

Rented

95 m², Prague 2, Vinohrady, Belgická





# Apartment Two-bedroom (3+1)

Rented

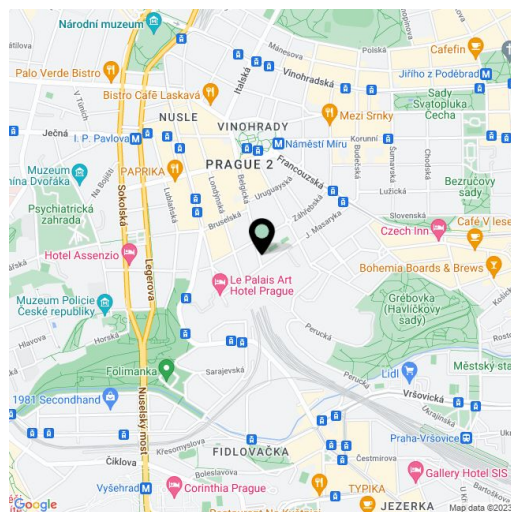
95 m², Prague 2, Vinohrady, Belgická

Total area	95 m²
Parking	Parking available.
Cellar	-
Service price	Building charges incl. Internet CZK 3,400/month. Deposit for electricity, gas, and water CZK 2,420/person/month.
PENB	G
Reference number	10463
Available from	Immediately

Completely furnished apartment with 2 balconies, on the 2nd floor of a renovated traditional building with an elevator, located on a quiet tree-lined street in an attractive residential part of Prague 2 - Vinohrady, just a minute's walk from the Náměstí Míru metro station and tram stops. A highly sought-after location within easy reach of the city center and with full amenities nearby, within walking distance of Gröbovka and Folimanka parks.

The unit has a living/dining room with a **balcony** and a fully fitted and equipped open plan kitchen, a **walk-in closet**, two bedrooms with en-suite bathrooms (one bedroom with a **balcony** and the other one with a **walk-in closet**), and a laundry/utility room. One of the bathrooms is also accessible from the hall.

High ceilings, **hardwood parquet floors**, laminate floors, recessed lighting, washer, dishwasher, microwave oven, TV, WiFi Internet, satellite TV connection, security bar on the entry door. Garage parking can be arranged at CZK 2,000/month + VAT.



\* Area of the unit according to the Civil Code. The area consists of the sum total area of the entire unit bounded by perimeter walls.