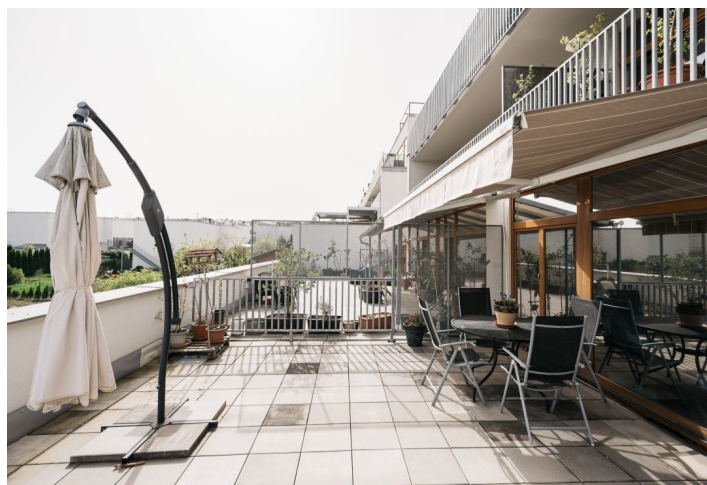
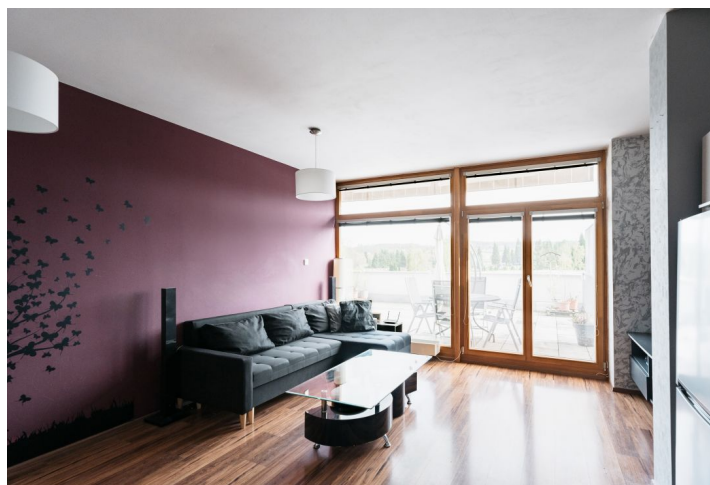
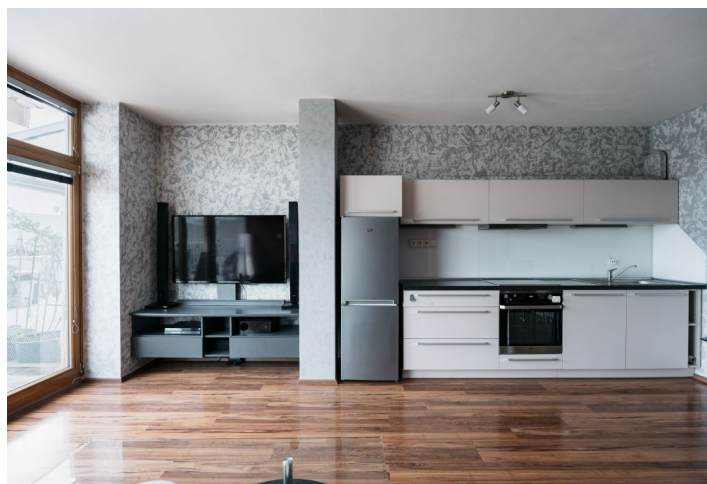




Apartment One-bedroom (2+kk)

Sold

61.8 m², Praha-západ, Mníšek pod Brdy, Ke Škole





Apartment One-bedroom (2+kk)

Sold

61.8 m², Praha-západ, Mníšek pod Brdy, Ke Škole

Total area	102 m²
Floor area*	62 m²
Terrace	41 m²
Parking	Parking in the underground garage
Garage	Yes
Cellar	Yes
PENB	C
Reference number	104534

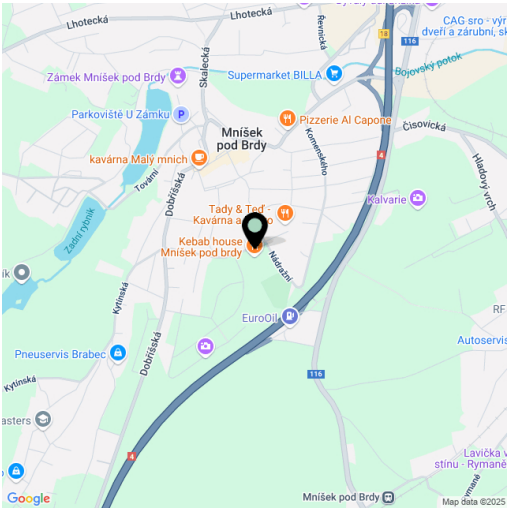
This bright apartment with a large sunny terrace and a garage is part of an apartment building near the center of Mníšek pod Brdy. The city is located in a beautiful landscape near the Hřebeny nature monument and the Brdy PLA, it provides all the infrastructure and an easy connection to Prague.

The layout of the apartment on the 1st floor consists of a living room, a spacious bedroom, a **walk-in wardrobe**, a bathroom (with a bathtub and a connection for a washing machine and dryer), a separate toilet, and an entrance hall. From both rooms, it is possible to enter the **40-meter southeast-facing terrace** offering views of the **distant surroundings**.

Floors are floating laminate and tiled, large windows are **wooden** with **shading film** and interior blinds. There is an **electrically controlled awning on the terrace**. The kitchen has an electric oven and an induction hob. In addition to the wardrobe, built-in wardrobes in the bedroom and hall also provide plenty of storage space, and the apartment also has a **storage room on the same floor**. Central heating. The purchase price includes a **garage space**, and guests can park in front of the building without any problems.

The **historic city center** is only a few minutes' walk away, and there is a kindergarten and elementary school, a cafe, and a grocery store nearby. Restaurants, a health clinic, and a shopping center are within easy walking distance. Advantages also include excellent accessibility to Prague via the D4 highway. The ride by suburban bus to the Smíchovské nádraží metro station takes 32 minutes.

Floor area 61.8 m², terrace 40.5 m², chamber 1.7 m².



* Area of the unit according to the Civil Code. The area consists of the sum total area of the entire unit bounded by perimeter walls.