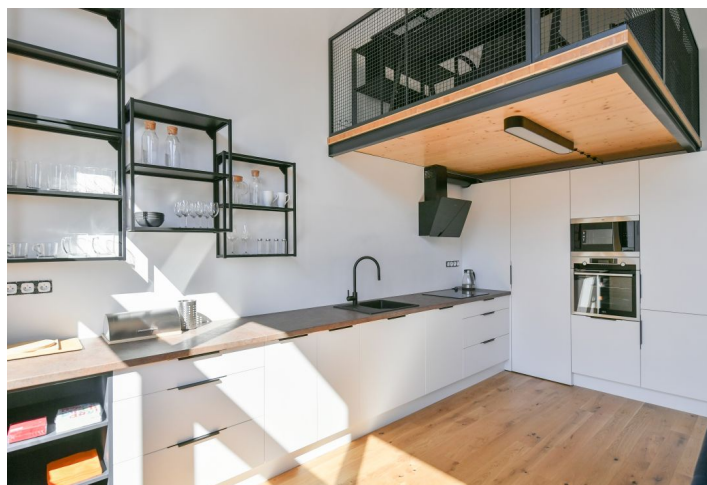




Apartment One-bedroom (2+kk)

€ 1 564 | CZK 38 000

64.1 m², Prague 5, Košíře, Naskové





Apartment One-bedroom (2+kk)

€ 1 564 | CZK 38 000

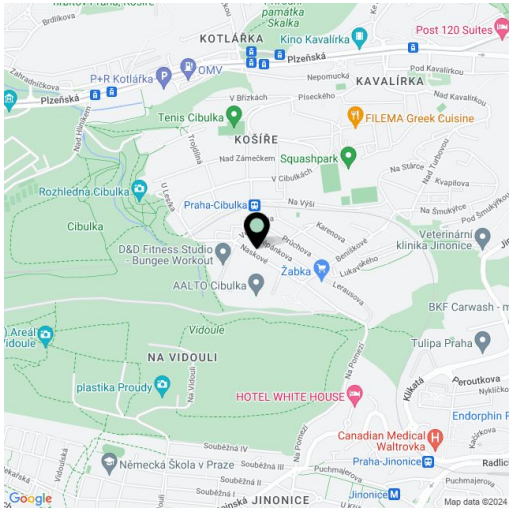
64.1 m², Prague 5, Košíře, Naskové

Total area	69 m²
Floor area*	64 m²
Loggia	5 m²
Parking	Garage parking.
Garage	Yes
Cellar	Yes
Service price	Monthly deposit for services, water, heating, and Internet: CZK 7,100. Electricity is billed separately.
PENB	B
Reference number	104528
Available from	01.03.2026

This fully furnished loft apartment designed by an architect with 2 galleries and a south-facing enclosed balcony is on the 3rd floor of the recently built PARVI Cibulka residential project on the site of a former industrial hall. Amenities include a 24/7 reception and security, a fitness center, and a green park in the courtyard. Located on the very edge of the Vidoule nature preserve, near the Cibulka forest park, in a quiet residential area within easy reach of full amenities and services. Close to the Jinonice metro station, Cibulka train station with connections to Anděl and the city center, and within quick reach of the Anděl/Nový Smíchov commercial center. Conveniently located for the German School.

The interior features a living room with a fully fitted open plan kitchen with a pantry, a bedroom and a study on the gallery floor, a bathroom (bathtub with a shower screen), a separate toilet with a bidet shower, and an entrance hall. Facing the courtyard, the enclosed balcony is accessible from the living room.

Hardwood floors, tiles, security entry door, automatic exterior blinds, central heating, washer, dryer, AEG kitchen appliances, dishwasher, induction stove top, microwave oven, video entry phone, cellar, camera system, pram storage, bike and dog wash area. A garage parking space is included.



* Area of the unit according to the Civil Code. The area consists of the sum total area of the entire unit bounded by perimeter walls.