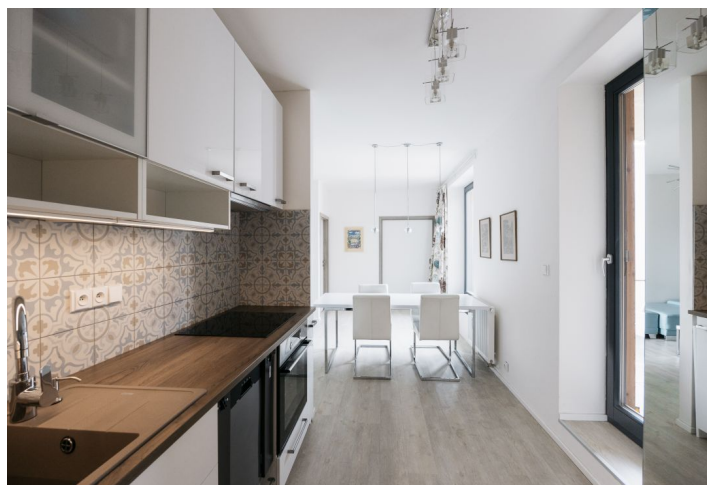
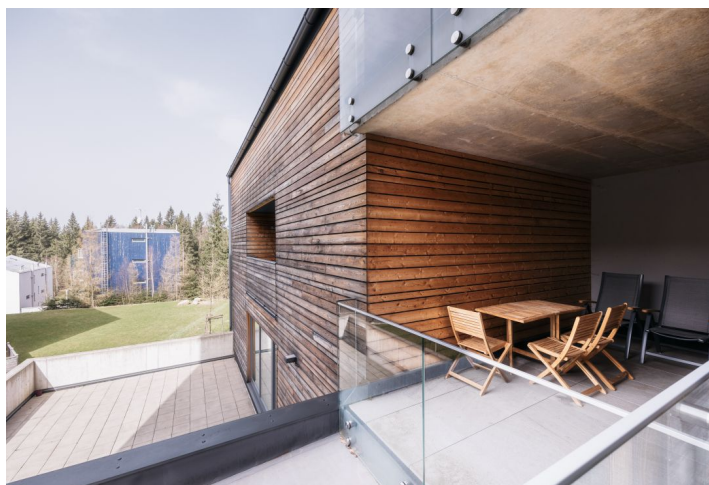




## Apartment Two-bedroom (3+kk)

59 m<sup>2</sup>, Jablonec nad Nisou, Harrachov

**Sold**





## Apartment Two-bedroom (3+kk)

**Sold**59 m<sup>2</sup>, Jablonec nad Nisou, Harrachov

Total area	72 m <sup>2</sup>
Floor area*	59 m <sup>2</sup>
Loggia	13 m <sup>2</sup>
Parking	Garage parking space
Garage	Yes
Cellar	Yes
PENB	B
Reference number	104444

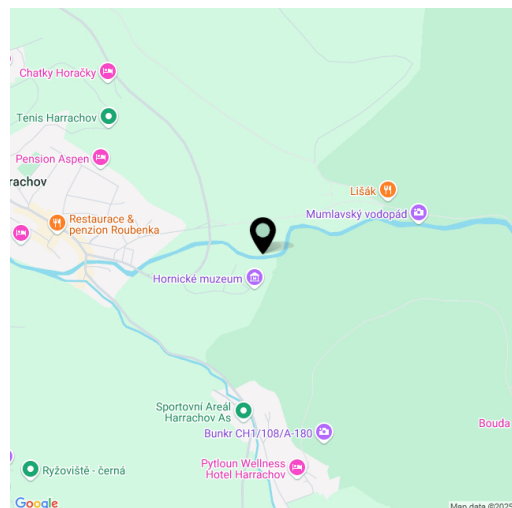
This mountain apartment, with a large loggia, plenty of storage space, and a garage, is located on the 1st floor of a modern building situated in a beautiful, quiet area on the edge of the popular resort of Harrachov. It is right next to a forest path leading to the nearby Mumlavské waterfalls and the bike paths or cross-country trails going through Krkonoše National Park.

The apartment consists of a living room with a dining area, an adjoining kitchen, smaller and larger bedrooms, a bathroom (with a shower), a separate toilet, and an entrance hall. The interior is connected by a **covered, southwest-facing loggia** with plenty of **privacy** and views of **Čertova Mountain**.

The building was approved in 2018. Floors are vinyl; large windows provide plenty of light and nice views. Heating is by a Thermona gas boiler. The purchase price includes **a garage space, a ski box, a practical storage room** on the same floor, and **a cellar cubicle**.

The convenient location allows you to go straight from the building to **hiking trails, bike trails**, and many groomed **ski trails**. A sports hall and the **Mining Museum** are nearby, and the **Ryžoviště cable car**, which is part of the **Harrachov ski area**, is also close. The place is excellently accessible all year round, the ride from the outskirts of Prague takes about an hour and a half by car. There is also a bus station not far from the apartment, with direct connections from Prague.

Floor area 59.2 m<sup>2</sup>, loggia 13.3 m<sup>2</sup>, ski box, cellar cubicle.  
Approved as a housing unit.



\* Area of the unit according to the Civil Code. The area consists of the sum total area of the entire unit bounded by perimeter walls.



## Apartment Two-bedroom (3+kk)

59 m<sup>2</sup>, Jablonec nad Nisou, Harrachov

**Sold**

