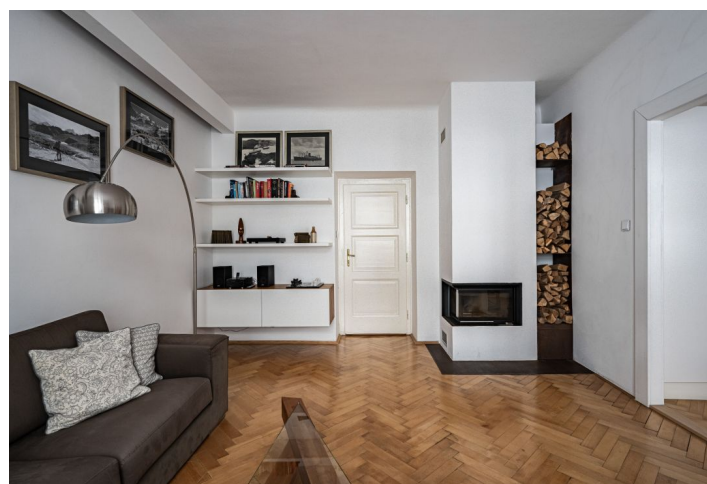
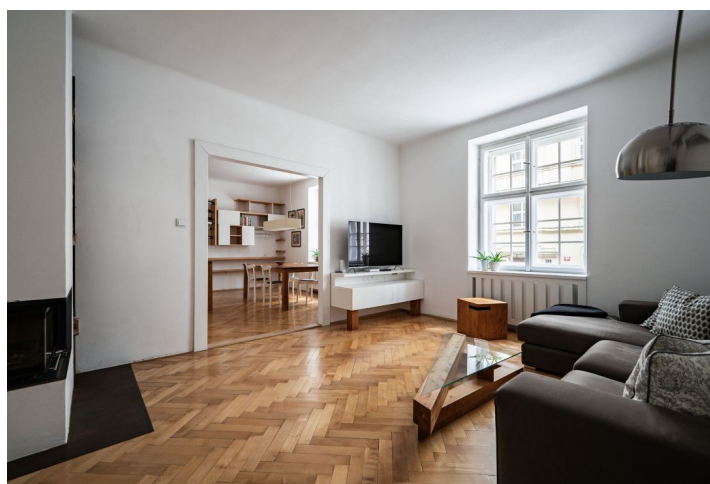




## Apartment Two-bedroom (3+1)

Rented

114 m², Prague 7, Holešovice, Letohradská





# Apartment Two-bedroom (3+1)

Rented

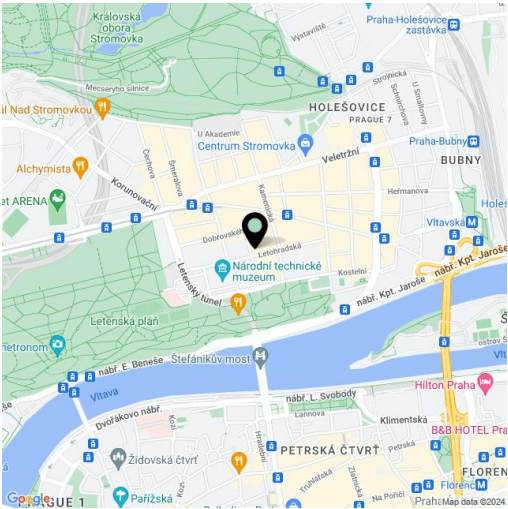
114 m², Prague 7, Holešovice, Letohradská

Total area	114 m²
Parking	-
Cellar	Yes
Service price	Monthly deposit for service charges and water: CZK 2,500 . Electricity and gas are billed separately.
PENB	Not required
Reference number	104242
Available from	Immediately

Boasting close proximity to Letná Park, this fully furnished renovated 2- bedroom apartment is situated on the ground floor of a well kept traditional building. Located on a quiet street just moments from the National Technical Museum and Letná Park, and within walking distance of Stromovka Park and the city center, a prime location with complete amenities and quick transportation connections (trams to the Vltavská and Hradčanská metro stations). The Prague Castle, international schools in Prague 6, and the airport are conveniently accessible.

The apartment includes a living room with a working wood burning **fireplace** , a fully fitted kitchen with a dining area, a bedroom with built-in wardrobes, a guest bedroom with a utility room and a small adjacent **study**, a bathroom (walk-in shower, toilet, built-in wardrobe), a separate toilet, and a spacious entrance hall with a built-in wardrobe.

**Green garden views, hardwood parquet floors**, tiles, security entry door, sofabed, gas boiler, washing machine, dishwasher, microwave oven, spacious **cellar**.



\* Size of the unit according to the Housing Act.  
The area consists of the sum total of the internal area of every room.