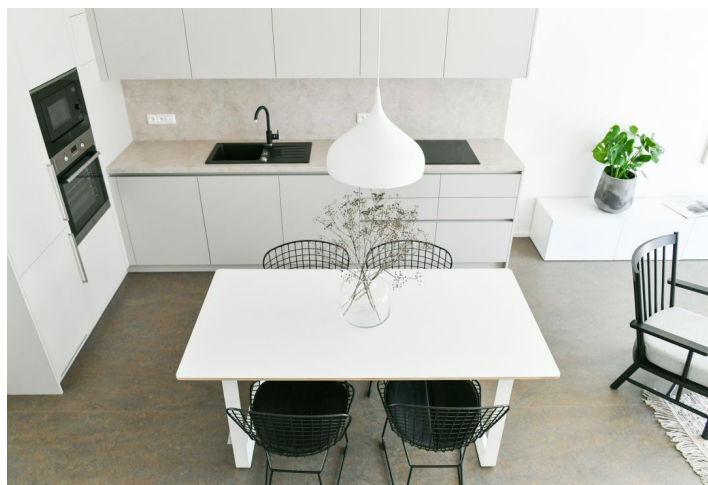
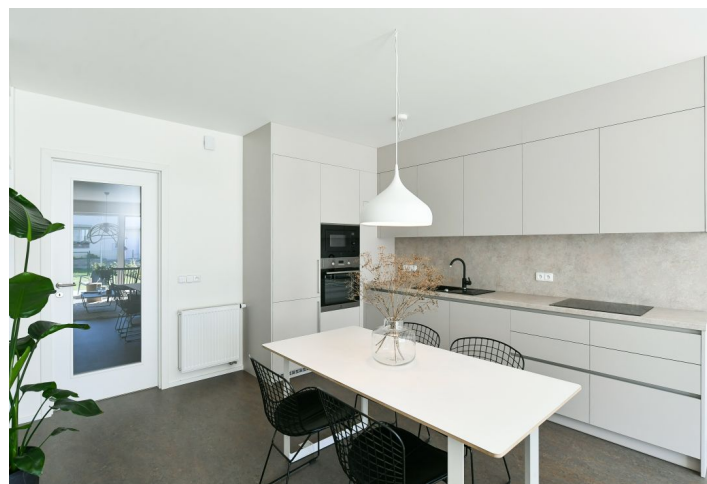
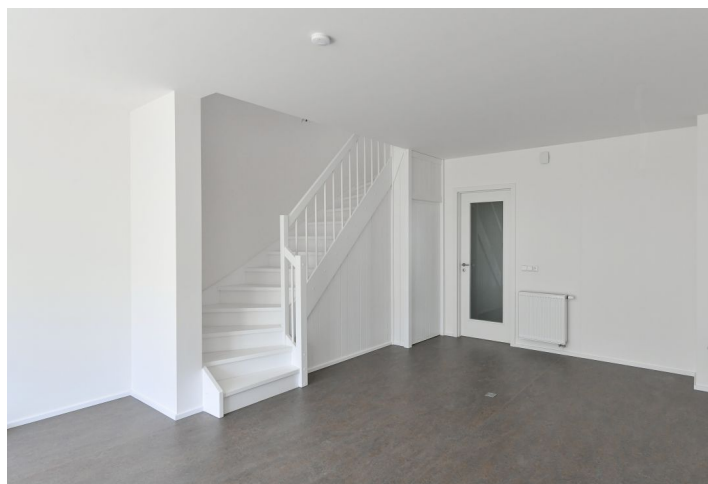




House Three-bedroom (4+kk)

Rented

108 m², Prague 8, Ďáblice, Heřmanická





House Three-bedroom (4+kk)

Rented108 m², Prague 8, Ďáblice, Heřmanická

Plot	119 m ²
Foot print	65 m ²
Garden	54 m ²
Parking	One outdoor parking space
Cellar	-
Service price	Utilities are billed separately.
PENB	G
Reference number	103960
Available from	Immediately

Brand new house in the Evergreen Ďáblice project. This is a newly built unfurnished 3-bedroom townhouse with a garden, in a quiet "garden" neighborhood north-west of Ďáblice. The residential location offers ample greenery and amenities and services within easy reach, including the Ďáblický háj forest park with many sports and relaxation opportunities incl. hiking and bike paths, plus the nearby Čimický háj, Přátelství Park, and the riding stables in Dolní Chabry. There is a bus stop moments away, with regular connections to Ládví metro station (under 10 minutes), and it takes 7 minutes to drive to the Letňany shopping mall, and 15 minutes to Holešovice.

The ground floor features a living room with a fully fitted open plan kitchen and access to the **terrace / garden**, an office or a guest room, a toilet, a storage room, and an entrance hall. The upper floor offers 3 bedrooms, a bathroom with a bathtub and a toilet, and a storage room.

Vinyl and laminated floating floors, tiles, triple glazed plastic windows, gas boiler. An outdoor **parking** space is included.

