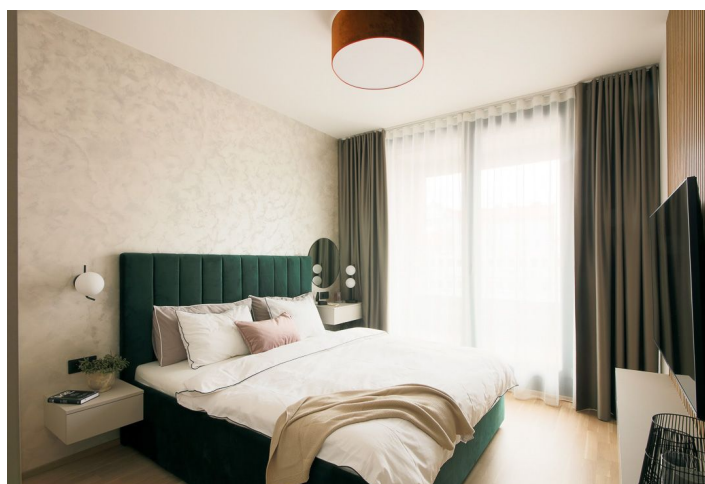




Apartment Three-bedroom (4+kk)

Rented

110 m², Prague 5, Smíchov, Šiklové





Apartment Three-bedroom (4+kk)

Rented

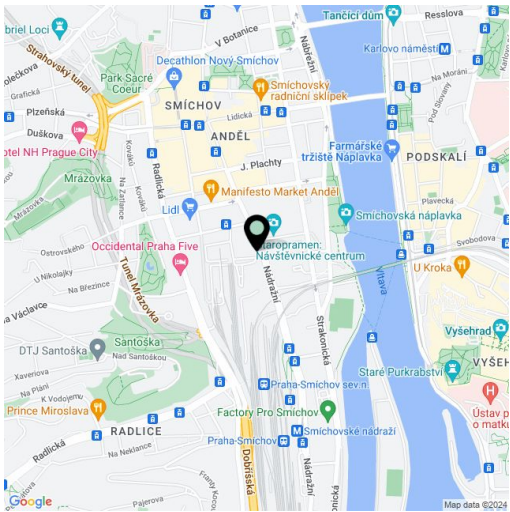
110 m², Prague 5, Smíchov, Šiklové

Total area	117 m²
Floor area*	110 m²
Loggia	8 m²
Parking	Garage parking.
Garage	Yes
Cellar	Yes
Service price	Monthly deposit for services, water, heating, Internet, and digital TV CZK 8,000. Electricity - transferred to the tenant.
PENB	B
Reference number	103933
Available from	Immediately

This fully furnished 2-bathroom apartment with 2 enclosed balconies is situated on the 2nd floor of the Smíchov City residential building with an elevator and parking. Located close to the Anděl commercial center in Smíchov and a district with a pedestrian zone, great accessibility by metro and tram, within easy reach of the French School, the Smíchov and Výtoň embankments, and several sports grounds. Within easy reach of rich amenities and services, the Anděl metro station, and the Na Knížecí bus terminal.

The interior features a living room with a fully fitted open plan kitchen, a master bedroom with an en-suite bathroom (bathtub, toilet), two bedrooms facing a quiet landscaped courtyard, a family bathroom (walk-in shower, toilet), a utility room, and an entrance hall. All main room have access to one of the **two terraces**.

Heat recovery ventilation, wooden floating floors, tiles, security entry door, built-in wardrobes in the hall and two bedrooms, central heating, washer, dryer, dishwasher, induction cooktop, microwave oven, wine fridge, two TV sets, video entry phone, Internet and cable TV, **cellar**. A **garage parking** space is included. Available from September 2025 or earlier (from July) upon agreement.



* Size of the unit according to the Housing Act.
The area consists of the sum total of the internal area of every room.