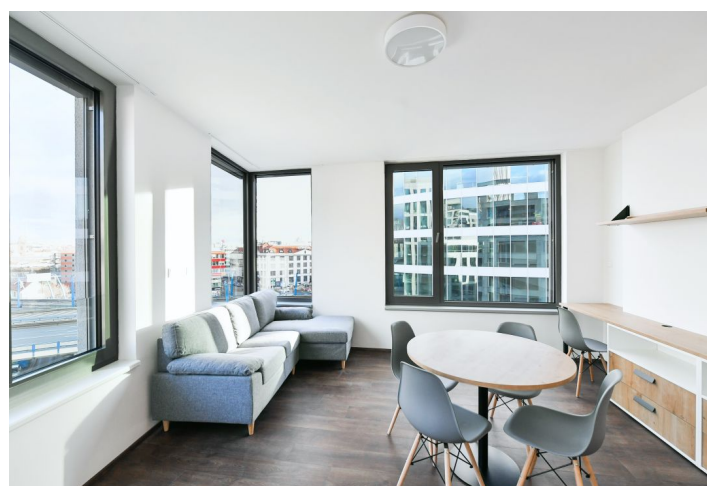
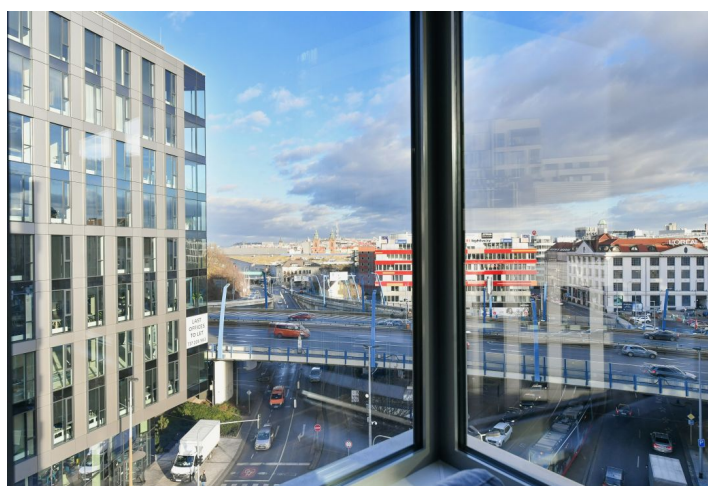
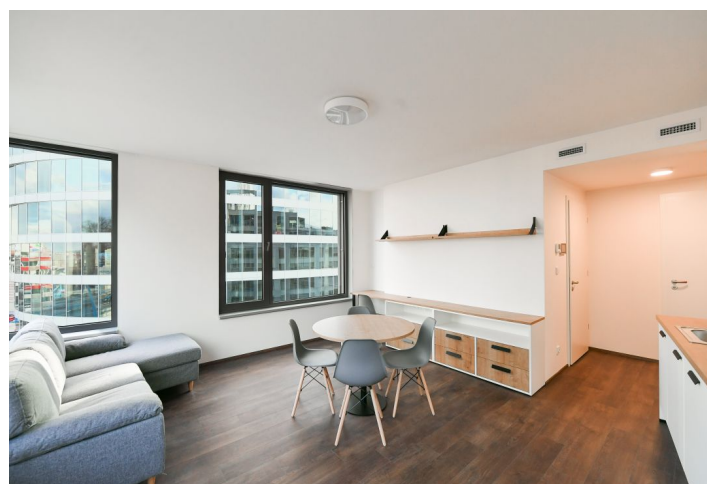




Apartment One-bedroom (2+kk)

Rented

45.9 m², Prague 5, Smíchov, Plzeňská





Apartment One-bedroom (2+kk)

Rented

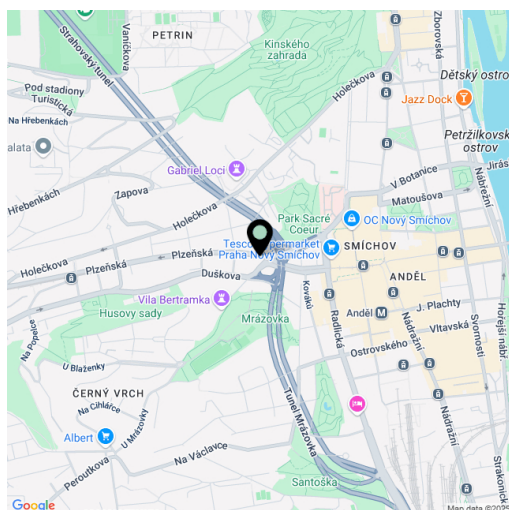
45.9 m², Prague 5, Smíchov, Plzeňská

Total area	46 m²
Parking	Garage parking available at extra cost.
Garage	Yes
Cellar	Yes
Service price	Monthly deposit for services, water, and heating: CZK 5,000. Electricity is billed separately.
PENB	B
Reference number	103926
Available from	Immediately

This furnished apartment offering views of Prague is on the 6th floor of the newly built MyMozart Residence with an elevator and underground parking. Located in Smíchov, Prague 5, within quick reach of the city center and complete amenities, just a 5 min. walk or a short tram stop from the Anděl metro station and the Nový Smíchov commercial and entertainment center. Conveniently located for the Na Knížecí bus terminal, the French School, plus the Bertramka, Sacre Coeur, Mrázovka, Kinského Sady, and Petřín Hill parks, as well as the tunnel complex including Strahovský, Mrázovka, and Blanka tunnels.

The interior features a living room with a fully fitted open plan kitchen and dining area, a bedroom with a built-in wardrobe, a bathroom (walk-in shower, toilet), and an entrance hall with built-in wardrobes.

Heat recovery ventilation, vinyl floors, tiles, double-glazed soundproofed windows, automatic exterior blinds, ceiling heating and cooling, washer, dishwasher, induction cooktop, microwave oven, electronic peephole door viewer, video entry phone, **cellar**, security cameras in the building. Janitor services are also included (help with minor repairs). A **garage parking** space is available for additional cost. A shared terrace available.



* Area of the unit according to the Civil Code. The area consists of the sum total area of the entire unit bounded by perimeter walls.