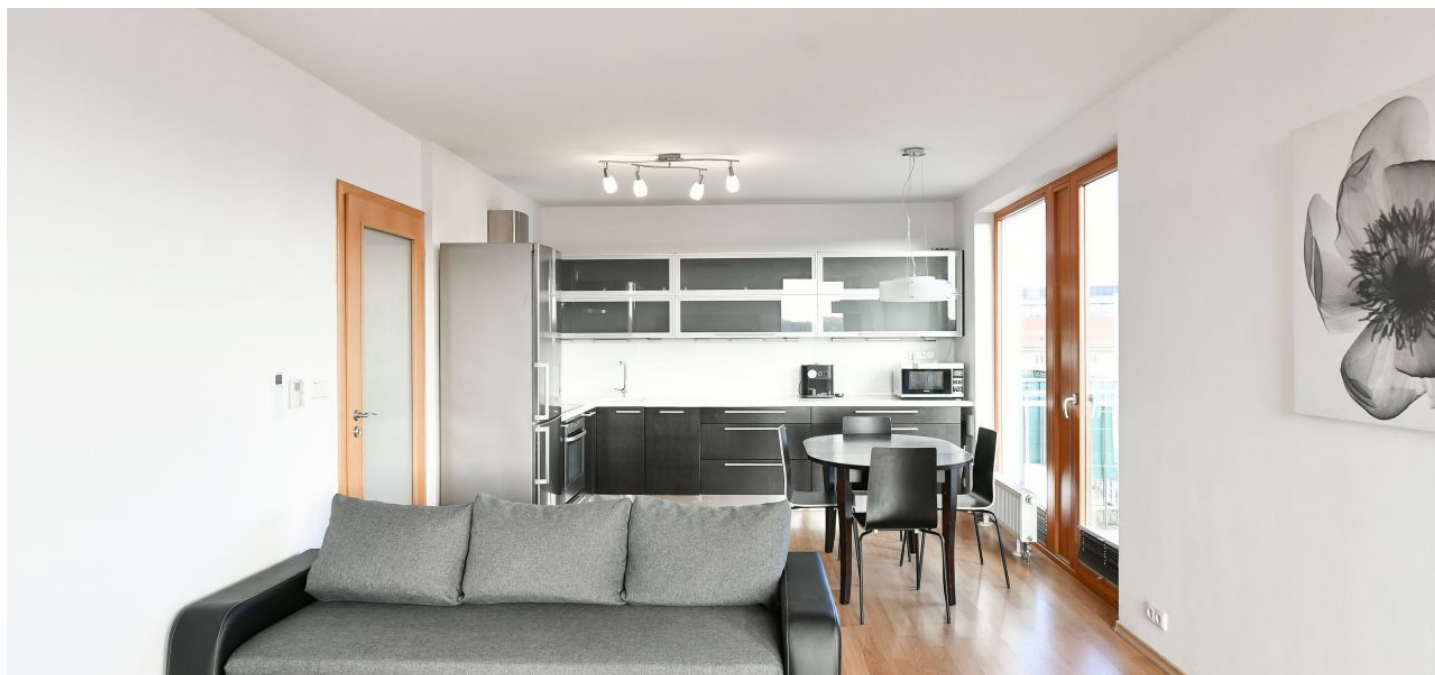




Apartment Two-bedroom (3+kk)

Rented

83 m², Prague 4, Michle, Krumlovská





Apartment Two-bedroom (3+kk)

Rented

83 m², Prague 4, Michle, Krumlovská

| | |
|-------------|-----------------|
| Total area | 95 m² |
| Floor area* | 83 m² |
| Balcony | 12 m² |
| Parking | Garage parking. |
| Garage | Yes |
| Cellar | - |

Service price Monthly deposit for services, water, and heating: CZK 6,000. Electricity is billed separately.

PENB Not required

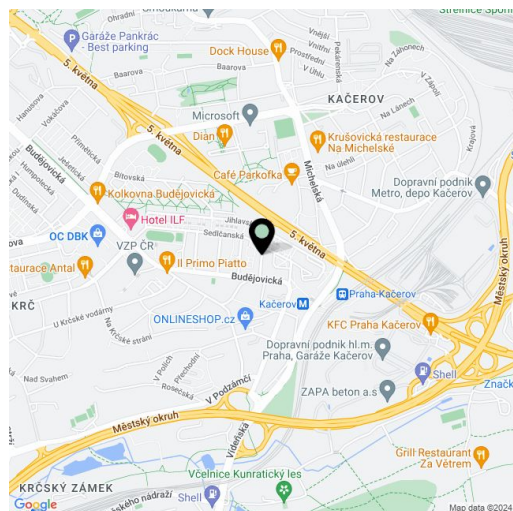
Reference number 103919

Available from Immediately

Boasting 2 balconies and lovely far-reaching views, this bright furnished air-conditioned apartment is situated on the 6th floor of a modern residential building with an elevator and security cameras. Conveniently located on a quiet street in close vicinity of the commercial and office center of Prague 4, with full amenities and services nearby and quick access to the city center, mere steps from a bus stop and a few min. walk from the Kačerov metro station.

The **south-facing** apartment features a living room with a fully fitted open plan kitchen and access to both **balconies**, 2 bedrooms, a bathroom with a bathtub and toilet, a guest toilet, a storage/utility room, and an entrance hall.

Air-conditioning, laminate floors, tiles, built-in wardrobes in one bedroom and a hall, pleated blinds, exterior roller blinds, central heating, washer, dryer, dishwasher, induction cooktop, microwave oven. A **garage parking** space is included.



* Size of the unit according to the Housing Act.

The area consists of the sum total of the internal area of every room.