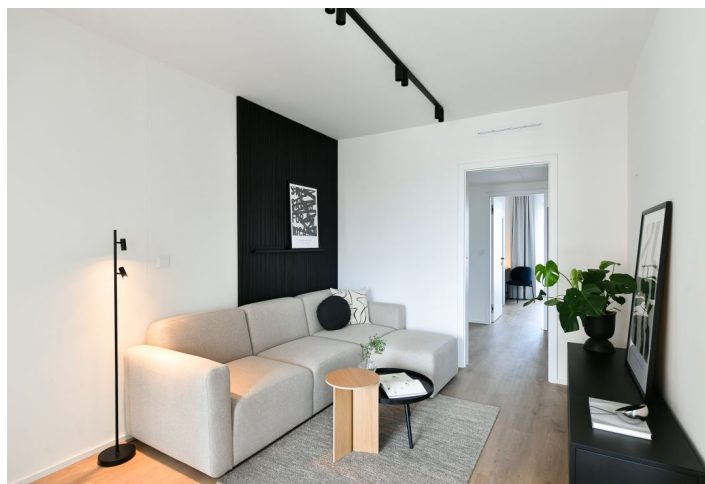
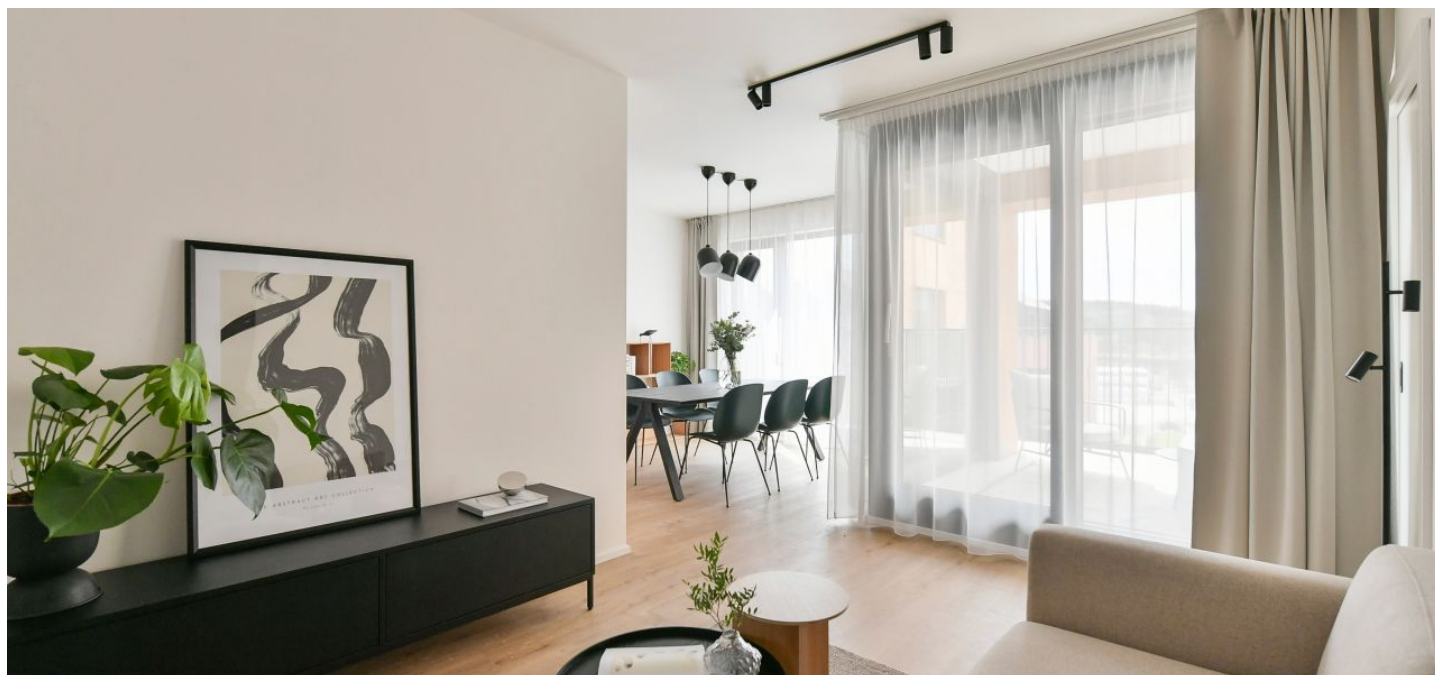




Apartment Two-bedroom (3+kk)

Rented

93.9 m², Prague 5, Smíchov, U Lihovaru



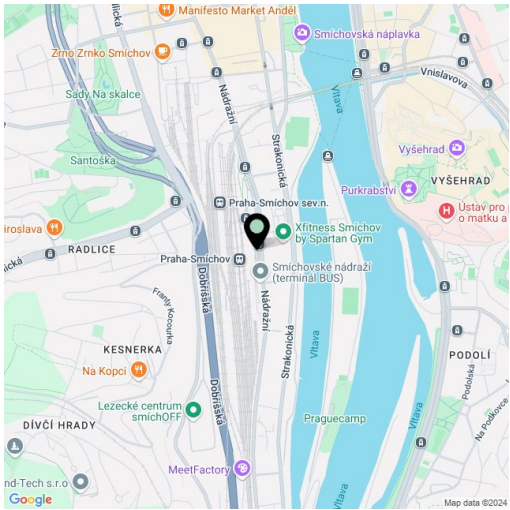


Apartment Two-bedroom (3+kk)

Rented

93.9 m², Prague 5, Smíchov, U Lihovaru

Total area	118 m²
Floor area*	94 m²
Balcony	11 m²
Loggia	13 m²
Parking	Garage parking
Garage	Yes
Cellar	Yes
Service price	Monthly deposit for service charges and utilities is billed separately.
PENB	B
Reference number	103851
Available from	Immediately



* Area of the unit according to the Civil Code. The area consists of the sum total area of the entire unit bounded by perimeter walls.

Brand new apartment in the new LIHOVAR residential district designed by the Black n'Arch atelier. This is a completely furnished 2-bedroom 2-bathroom apartment with an enclosed balcony and a balcony, situated on the 5th floor in a residential complex with underground parking and green roofs, in the new Smíchov Riverside area just steps from the left bank of the Vltava river, Císařská louka, Podolí, or the nearby Dívčí hrady and Děvín. The project is shaped by the industrial heritage of Smíchov and the original refinery boasting preserved original features such as the Erektus chimney and the Distillery. Inspirational amenities include a food market, a gym, Czech Photo Gallery, David Černý's Musoleum art gallery, street art, and Křištof Kintera's Garden of Lights. Set within easy reach of good amenities, a kindergarten, primary and grammar schools, as well as numerous sports and outdoor activities - Císařská louka Golf, Podolí tennis and swimming, bike paths along the river. With great transport accessibility, the project is located a short tram stop from the Smíchovské nádraží metro station, line B, and has easy connections to the D1 highway to Brno, the D5 motorway to Plzeň and the Václav Havel airport.

The interior features a living room with a fully fitted open plan kitchen, a dining area and access to the **enclosed balcony**, a master bedroom with a **balcony** and an en-suite bathroom with a walk-in shower and a toilet, a second bedroom, a bathroom with a bathtub and a toilet, and an entrance hall.

LOXONE smart home system, **heat recovery ventilation**, vinyl floors, tiles, built-in wardrobes, central underfloor heating, washing machine, dishwasher, video entry phone, active Internet connection, camera system, lift. A **garage parking** space is available at CZK 2,500/month + VAT. A **cellar** is available at an additional fee. Building amenities also include a **reception**, plus property managment and on-site facility managment services.



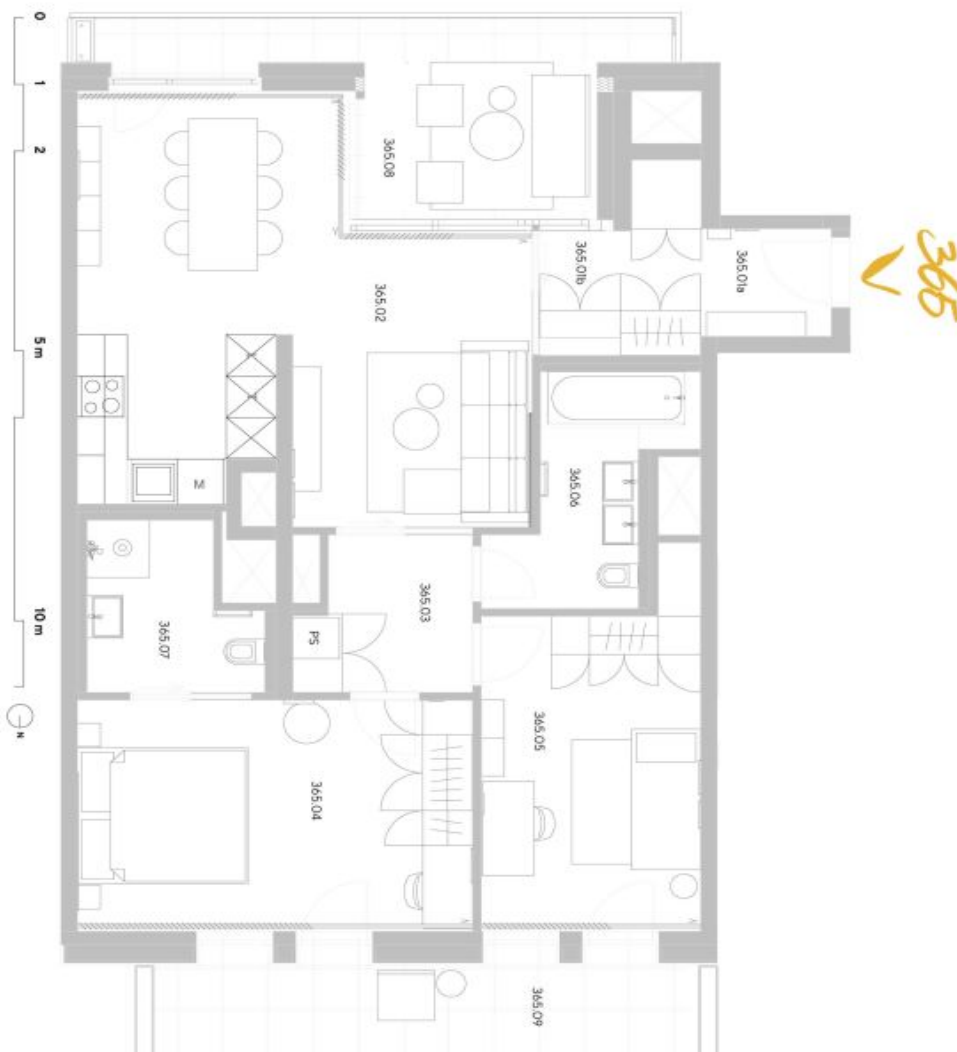
Apartment Two-bedroom (3+kk)

Rented

93.9 m², Prague 5, Smíchov, U Lihovaru

LIHOVAR
Spirit of
Smíchov

Exkluzivní zastoupení pro pronájem bytů
Eva Jilková, +420 257 328 281, +420 724 551 238, info@lihovar.cz
svoboda&williams | CHRISTIE'S
INTERNATIONAL REAL ESTATE
Všechny informace (včetně, grafická zobrazení, obšáhové popisy) uvedené na této stránce jsou pouze informativní povahy a nejsou právnou předlohou
realizace stávajícího projektu nebo bytů. Představa pouze orientační zobrazení, které může v budoucnu podléhat změnám. Závazným podkladem realizace
je prováděná výtvarná studie dokumentace. Více informací o této nabídce bytů a jednotlivých detailech na: www.lihovar.cz/development
verze 2004030



byt 3+KK
93,90 m²
6 .NP – SJ

365



umístění na podlaží



přehled ploch

Kódo	Záběr	rozloha [v m²]
365.01a	Záběr	2,60
365.01b	Chodba	4,70
365.02	Pokoje s kuchyňským koutem	31,00
365.03	Chodba	4,80
365.04	Pokoje	17,50
365.05	Pokoje	13,90
365.06	Koupelna + WC	6,10
365.07	Koupelna + WC	4,90
obytelná plocha jednotky		85,50

365 X	Srdle kornětky	8,40
podlahová plocha jednotky		93,90

Příslušenství		
365.08	Lodžie	13,00
365.09	Balkón	11,40

energetický štítek B - velmi úsporná

trigema