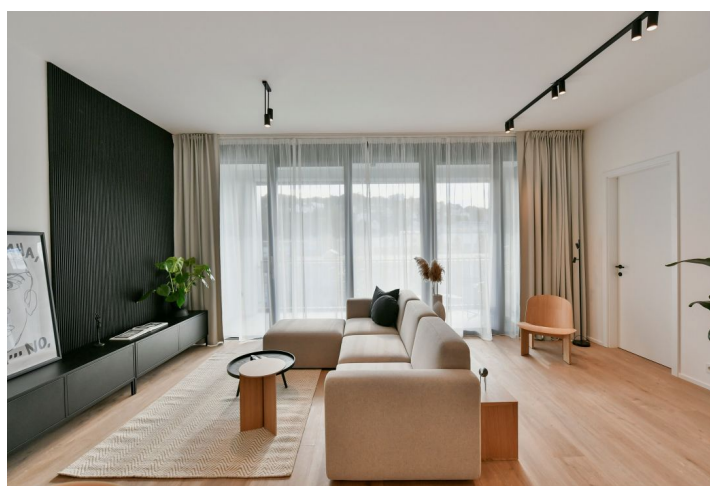




Apartment Three-bedroom (4+kk)

Rented

110.4 m², Prague 5, Smíchov, U Lihovarů



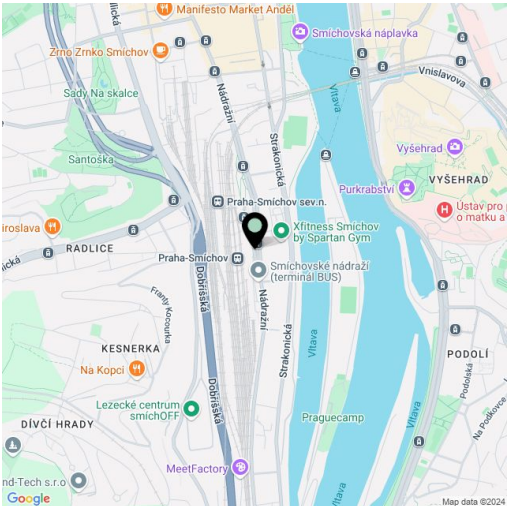


Apartment Three-bedroom (4+kk)

Rented

110.4 m², Prague 5, Smíchov, U Lihovaru

Total area	139 m²
Floor area*	110 m²
Terrace	29 m²
Parking	Garage parking
Garage	Yes
Cellar	Yes
Service price	Monthly deposit for service charges and utilities is billed separately.
PENB	B
Reference number	103846
Available from	Immediately



* Area of the unit according to the Civil Code. The area consists of the sum total area of the entire unit bounded by perimeter walls.

Brand new apartment in the new LIHOVAR residential district designed by the Black n'Arch atelier. This is a completely furnished 3-bedroom 2-bathroom apartment with 2 terraces, situated on the 5th floor in a residential complex with underground parking and green roofs, in the new Smíchov Riverside area just steps from the left bank of the Vltava river, Čísařská louka, Podolí, or the nearby Dívčí hrady and Děvín. The project is shaped by the industrial heritage of Smíchov and the original refinery boasting preserved original features such as the Erektus chimney and the Distillery. Amenities that go above and beyond will include a food market, the Czech Photo Gallery, David Černý's Musoleum art gallery and street art. Set within easy reach of good amenities, a kindergarten, primary and high schools, as well as numerous sports and outdoor activities - golf on Čísařská louka, tennis and swimming in Podolí, and bike paths along the river. With great transport accessibility, the project is located a short tram stop from the Smíchovské nádraží metro station (line B), and has easy connections to the D1 highway to Brno, the D5 highway to Plzeň, and the Václav Havel airport.

The interior features a living room with a fully fitted open plan kitchen and a dining area, a master bedroom with a walk-in closet and an en-suite bathroom with a walk-in shower and a toilet, two bedrooms, a bathroom with a bathtub, a separate toilet, a utility room, and an entrance hall. All main rooms have access to one of the terraces.

LOXONE smart home system, heat recovery ventilation, vinyl floors, tiles, built-in wardrobes, central underfloor heating, washing machine, dishwasher, video entry phone, active Internet connection, camera system, lift. A garage parking space is available at CZK 2,500/month + VAT. A cellar is available at an additional fee. Building amenities also include a reception, plus property management and on-site facility management services.



Apartment Three-bedroom (4+kk)

Rented

110.4 m², Prague 5, Smichov, U Lihovaru



Exkluzivní zastoupení pro pronájem bytů

Eva Jilková, +420 257 328 281, +420 724 551 238, info@lihovar.cz

svoboda&williams | CHRISTIE'S

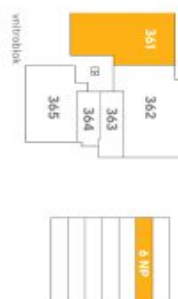
Všechny informace (včetně, grafická zobrazení, obstarání popisu) uvedené na této stránce jsou pouze informativní povahy a nejsou přesnou představou reálného stavu projektu nebo bytu. Představy pouze orientační zobrazení. Své měřítko v budovném podkladě zmapám. Zobrazení podkladem reálného je poskytována výhradně smluvní dokumentace. Více informací k této stránce bytu a jednotlivým detailům na: www.lihovar.cz/obstarani verze 20240213

lihovar.cz

byt 4+KK
110,40 m²
6 .NP – VZ

361

ul. Strakonická



umístění na podlaží



přehled ploch

číslo	název	rozloha (v m ²)
361.01	Zábrani	10,50
361.02	Pokoje s kuchyňským koutem	35,40
361.03	Pokoje	14,90
361.04	Pokoje	13,50
361.05	Pokoje	13,10
361.06	Koupelna	4,30
361.07	Koupelna + WC	4,40
361.08	WC	2,10
361.09	Koridory	4,40
361.10	obývací plocha jednotky	102,60

361.X	Svlekové korytce	7,80
podlahová plocha jednotky		110,40

příslušenství	
361.10	Terasa
361.11	Terasa
	11, Kč

energetický štítek B - velmi úsporná

trigema