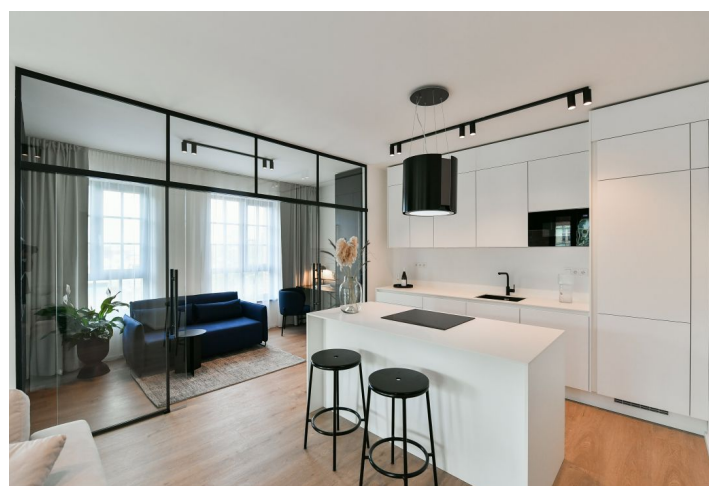
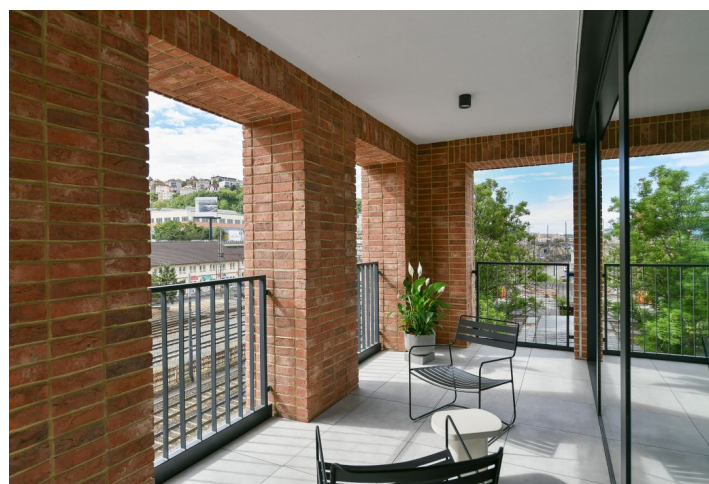




Apartment Two-bedroom (3+kk)

Rented

102.7 m², Prague 5, Smíchov, U Lihovaru



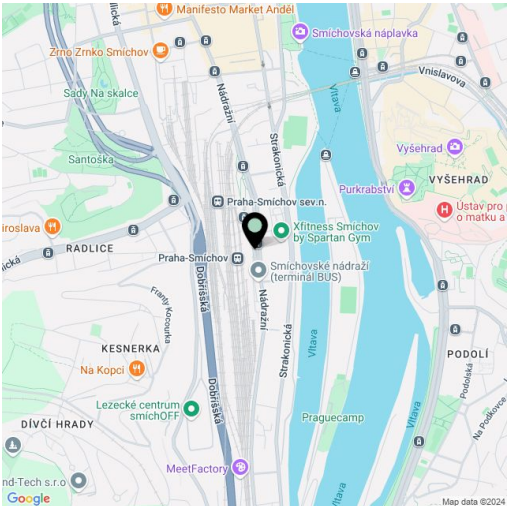


Apartment Two-bedroom (3+kk)

Rented

102.7 m², Prague 5, Smíchov, U Lihovaru

Total area	117 m²
Floor area*	103 m²
Loggia	14 m²
Parking	Garage parking
Garage	Yes
Cellar	Yes
Service price	Monthly deposit for service charges and utilities is billed separately.
PENB	B
Reference number	103830
Available from	Immediately



* Area of the unit according to the Civil Code. The area consists of the sum total area of the entire unit bounded by perimeter walls.

Brand new apartment in the new LIHOVAR residential district designed by the Black n'Arch atelier. This is a completely furnished 2-bedroom 2-bathroom apartment with an enclosed balcony, situated on the third floor in a residential complex with underground parking and green roofs, in the new Smíchov Riverside area just steps from the left bank of the Vltava river, Císařská louka, Podolí, or the nearby Dívčí hrady and Děvín. The project is shaped by the industrial heritage of Smíchov and the original refinery boasting preserved original features such as the Erektus chimney and the Distillery. Inspirational amenities include a food market, a gym, Czech Photo Gallery, David Černý's Musoleum art gallery, street art, and Křištof Kintera's Garden of Lights. Set within easy reach of good amenities, a kindergarten, primary and grammar schools, as well as numerous sports and outdoor activities - Císařská louka Golf, Podolí tennis and swimming, bike paths along the river. With great transport accessibility, the project is located a short tram stop from the Smíchovské nádraží metro station, line B, and has easy connections to the D1 highway to Brno, the D5 motorway to Plzeň and the Václav Havel airport.

The interior features a living room with a fully fitted open plan kitchen, a dining area and access to the **enclosed balcony**, an office, a master bedroom with an en-suite bathroom with a walk-in shower and a toilet, a second bedroom, a bathroom with a bathtub, a separate toilet, a utility room, and an entrance hall.

LOXONE smart home system, **heat recovery ventilation**, vinyl floors, tiles, built-in wardrobes, central underfloor heating, washing machine, dishwasher, video entry phone, active Internet connection, camera system, lift. A **garage parking** space is available at CZK 2,500/month + VAT. A **cellar** is available at an additional fee. Building amenities also include a **reception**, plus property managment and on-site facility managment services.



Apartment Two-bedroom (3+kk)

Rented

102.7 m², Prague 5, Smíchov, U Lihovaru



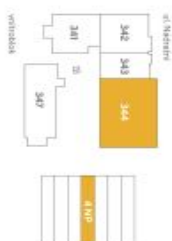
Exkluzivní zastoupení pro pronájem bytů
Eva Jilková, +420 257 328 281 +420 724 551 238, info@lihovar.cz
svoboda&williams | CHRISTIE'S
INTERNATIONAL REAL ESTATE
Všechny informace (veřejnost, grafika, zobrazení, občasné popisy) uvedené na této stránce jsou pouze informativní povahy a nelze je považovat za závazek. Představa je pouze orientační zobrazení, které může být v budoucnu podléhat změně. Závazným podkladem realitace je poskytnutá výtisková dokumentace. Více informací k této nabídce bytů a jednotlivým detailům na: www.lihovar.cz/realitace
verze 2018030



byt 3+KK
102,70 m²
4 .NP – SZ



umístění na podlaží



přehled ploch

část	rozloha (v m²)
344.01a Zábaví	4,90
344.01b Chodba	7,00
344.02 Pokoj s kuchyňským koutem	33,10
344.02b Předsípení	9,80
344.03 Pokoj	14,50
344.04 Pokoj	12,70
344.05 Koupelna	4,30
344.06 Koupelna + WC	3,90
344.07 WC	1,70
344.08 Komora	4,10
obýtná plocha jednotky	96,00
344. X Svislé konstrukce	6,70
podlahová plocha jednotky	102,70
příslušenství	
344.09 Lodžie	14,10

energetický štítek B – velmi úsporné

