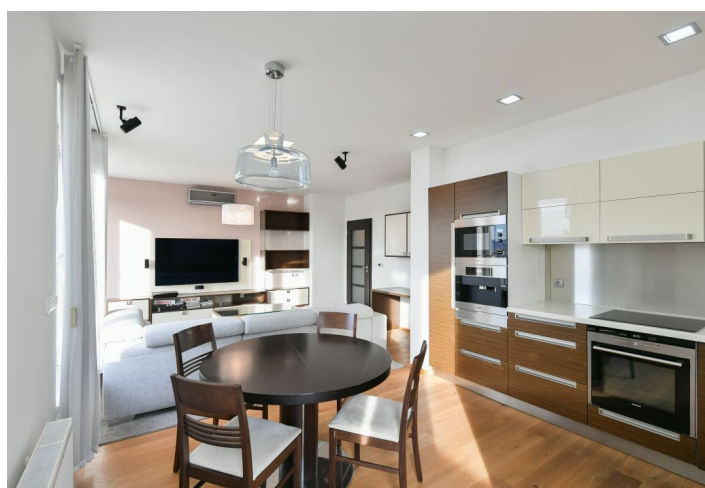
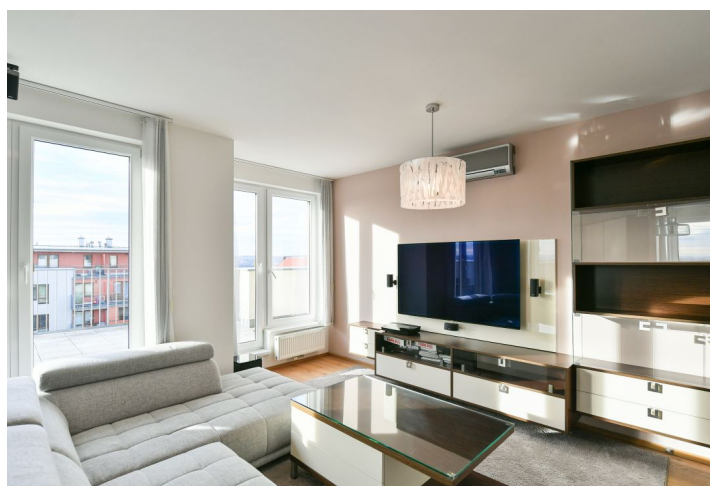




## Apartment Two-bedroom (3+kk)

Rented

79 m², Prague 8, Kobylisy, Ke Stírce





## Apartment Two-bedroom (3+kk)

**Rented**

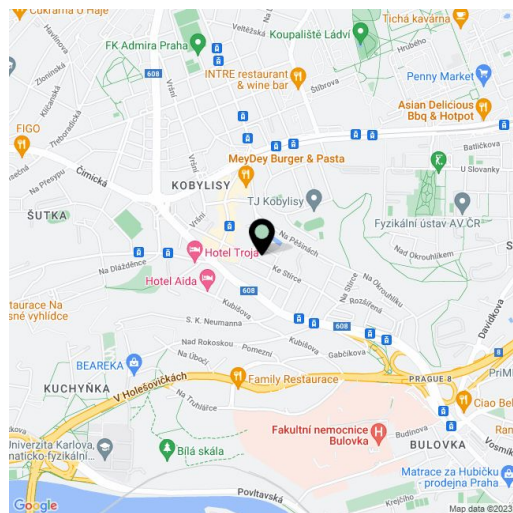
79 m², Prague 8, Kobylisy, Ke Stírce

Total area	156 m²
Floor area*	79 m²
Terrace	77 m²
Parking	Garage parking.
Garage	Yes
Cellar	Yes
Service price	Monthly deposit for services and water: CZK 3,000. Electricity and gas are billed separately (transferred to the tenant).
PENB	C
Reference number	103625
Available from	01.03.2027

Boasting 2 terraces and lovely far-reaching views of Prague, this bright fully furnished air-conditioned 2-bedroom apartment is situated on the 4th topmost floor of a modern apartment building with an elevator and on-site parking. Set in a quiet residential neighborhood in Libeň, just a few min. walk from the Kobylisy metro station (11 min. to the city center), with multiple tram and bus links. The location offers full amenities within easy reach including the Stírka outdoor swimming pool, the Okrouhlík forest park, the popular Šutka Water Park, the Havránka natural reserve, the Čimický and Ďáblický háj forests, Velká Skála Rocks, the Prague ZOO and Botanical Garden, and more.

The interior features a living room with a fully fitted open plan kitchen, 2 bedrooms with built-in wardrobes, a fitted **walk-in closet**, a bathroom (corner bathtub, walk-in shower, toilet), a utility room, a guest toilet, and an entrance hall. All main rooms and the walk-in closet have access to a **terrace**.

**Air-conditioning, hardwood parquet floors**, tiles, custom-made built-in furniture, home cinema with **Bose** built-in sound system, gas boiler, underfloor heating in the toilet, washing machine, **Miele** and **Siemens** kitchen appliances, dishwasher, induction cooktop, microwave oven, coffee maker, TV, **cellar**. A **garage parking** space is included. **An outside parking spot** behind a remote controlled gate available.



\* Size of the unit according to the Housing Act.  
The area consists of the sum total of the internal area of every room.