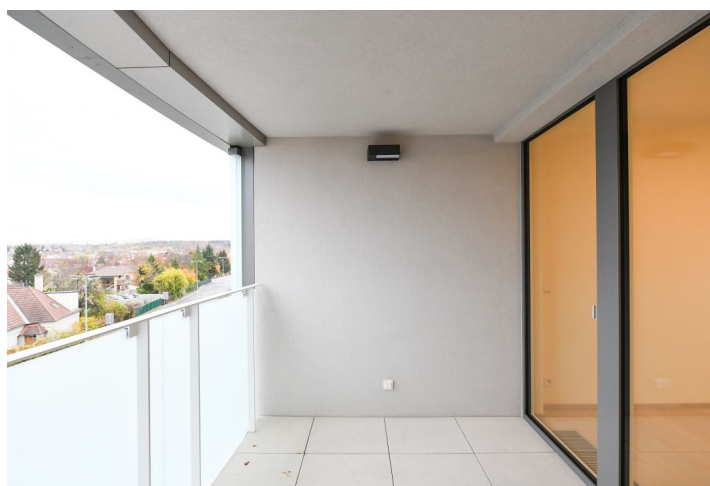




## Apartment One-bedroom (2+kk)

Rented

61 m<sup>2</sup>, Prague 4, Michle, Hodonínská





# Apartment One-bedroom (2+kk)

Rented

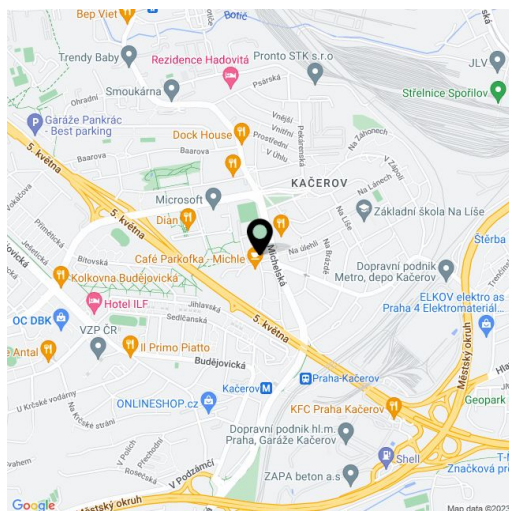
61 m², Prague 4, Michle, Hodonínská

Total area	67 m²
Floor area*	61 m²
Loggia	6 m²
Parking	Garage parking.
Garage	Yes
Cellar	Yes
Service price	Monthly deposit for services, water, and heating: CZK 5,639. Electricity is billed separately (transferred to the tenant).
PENB	B
Reference number	103382
Available from	Immediately

This brand new unfurnished apartment with an enclosed balcony is on the 4th floor of the newly built, high standard Oliva Residence with underground parking. Conveniently located on the edge of a quiet residential neighborhood in Michle, which offers a full range of amenities and services, in the vicinity of the Prague 4 commercial/office center, near the BB Centrum and Brumlovka multipurpose centers. Within easy reach of the Budějovická and Pankrác metro stations with quick access to the city center.

The interior features a living room with a fully fitted open plan kitchen, a bedroom with a built-in wardrobe, an en-suite bathroom (bathtub, toilet), and access to the **enclosed balcony**, a storage/laundry room, a guest toilet, and an entrance hall with built-in wardrobes.

**Heat recovery ventilation, hardwood floors**, tiles, security entry door, soundproof windows, automatic exterior blinds in the living room, central heating, underfloor heating in the living room, dishwasher, induction cooktop, video entry phone, **cellar**, barrier-free access, elevator. A **garage parking** space is included.



\* Area of the unit according to the Civil Code. The area consists of the sum total area of the entire unit bounded by perimeter walls.