



## House Four-bedroom (5+1)

350 m², Praha-západ, Ohrobec

**Sold**





## House Four-bedroom (5+1)

**Sold**

350 m², Praha-západ, Ohrobec

Plot	1 485 m²
Foot print	265 m²
Garden	1 220 m²
Parking	Garage and 3 outdoor parking spaces
Garage	Yes
Cellar	Yes
PENB	E
Reference number	103287

**This family house with a fireplace, large south-facing garden, and a partial basement is part of a small, peaceful village located right on the edge of the Střed Čech nature park, in the neighborhood of Dolní Břežany and Prague.**

The ground floor consists of a living room, a kitchen, a guest room, an airy bathroom (with a bathtub), an entrance hall, and a staircase hall. The living room has access to **the winter garden** and beyond to the **grassy garden**. On the 1st floor is a bathroom (with a shower), a master bedroom with **a dressing room and a sunny terrace**, and 2 other rooms with access to **a terrace or balcony**. The basement contains a laundry room, technical facilities, and extensive storage areas. After minor structural modifications, the house can be used for **multi-generational living**.

The construction was completed in 1996 and reconstructed in 2011. Windows are wooden with triple glazing; floors are **parquet**. **A wood-burning fireplace** is in the living room, where there is also hot water **underfloor heating** (in the kitchen and bathrooms, the floors are heated electrically), the other rooms have **designer radiators**, providing a pleasant atmosphere even on cloudy days. The heating has a central Danfoss control mechanism, the heat source is a heat pump. A camera system, security window film, motion sensors, and an alarm provides **a sense of security**. Drinking water is treated through a softener and 3 filters. Convenient parking is provided by **the garage and on 3 outdoor parking spaces**. The land can be used for **further construction**.

**A very quiet place right next to a forest** in the Jarovské údolí, high above the **Vltava River canyon**. In the village is a kindergarten and an elementary school, a grocery store, and a restaurant. The wider civic amenities are in nearby Dolní Břežany. In addition to the beautiful surrounding landscape, and having **easy reach to Prague** is also a big advantage, not only by car, but also by suburban bus or train from a stop about 6 minutes away by car.

Usable area 350 m², built-up area 265 m², garden 1,220 m², land 1,485 m².



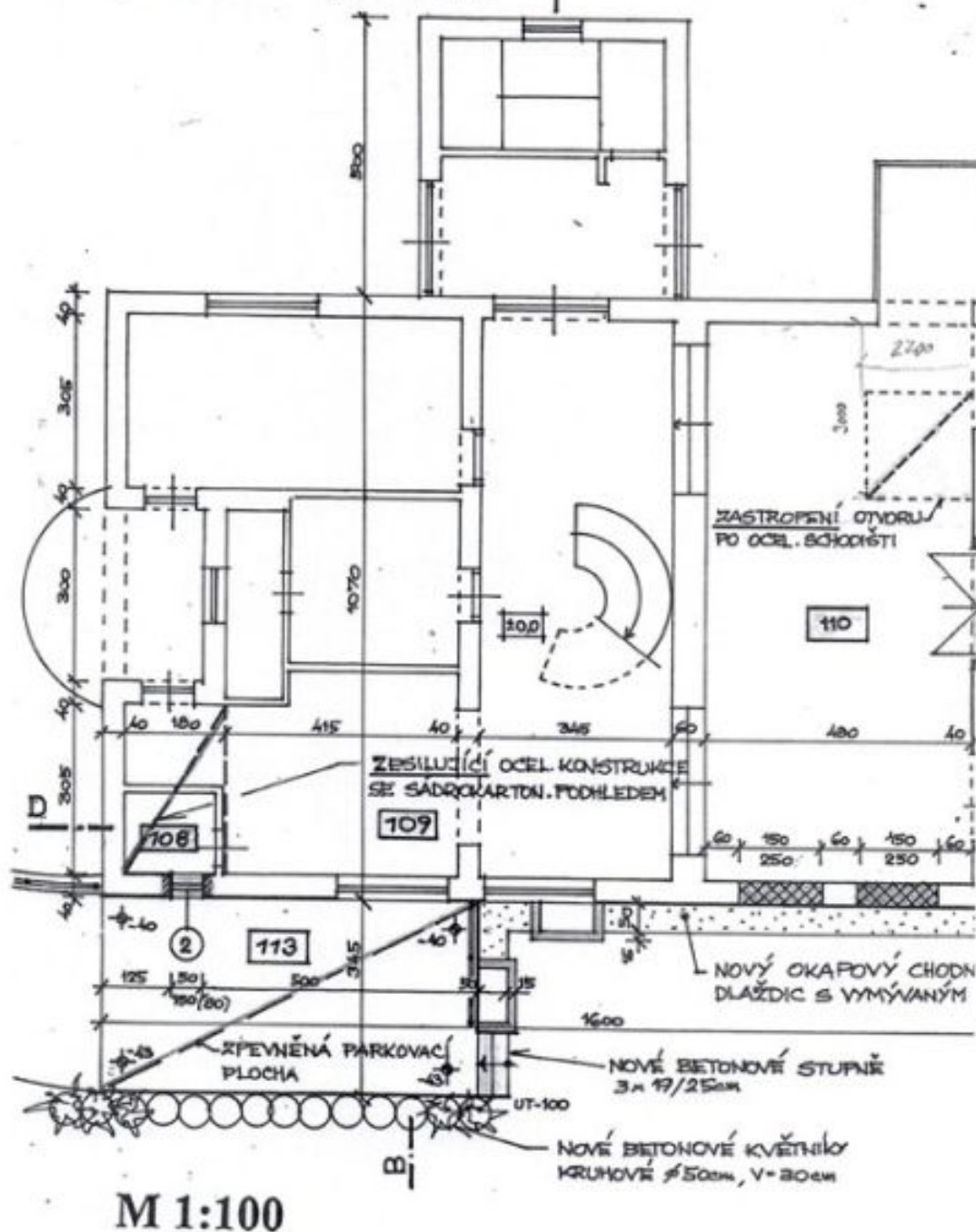


## House Four-bedroom (5+1)

350 m², Praha-západ, Ohrobec

Sold

### Půdorys 1.NP. – přízemí



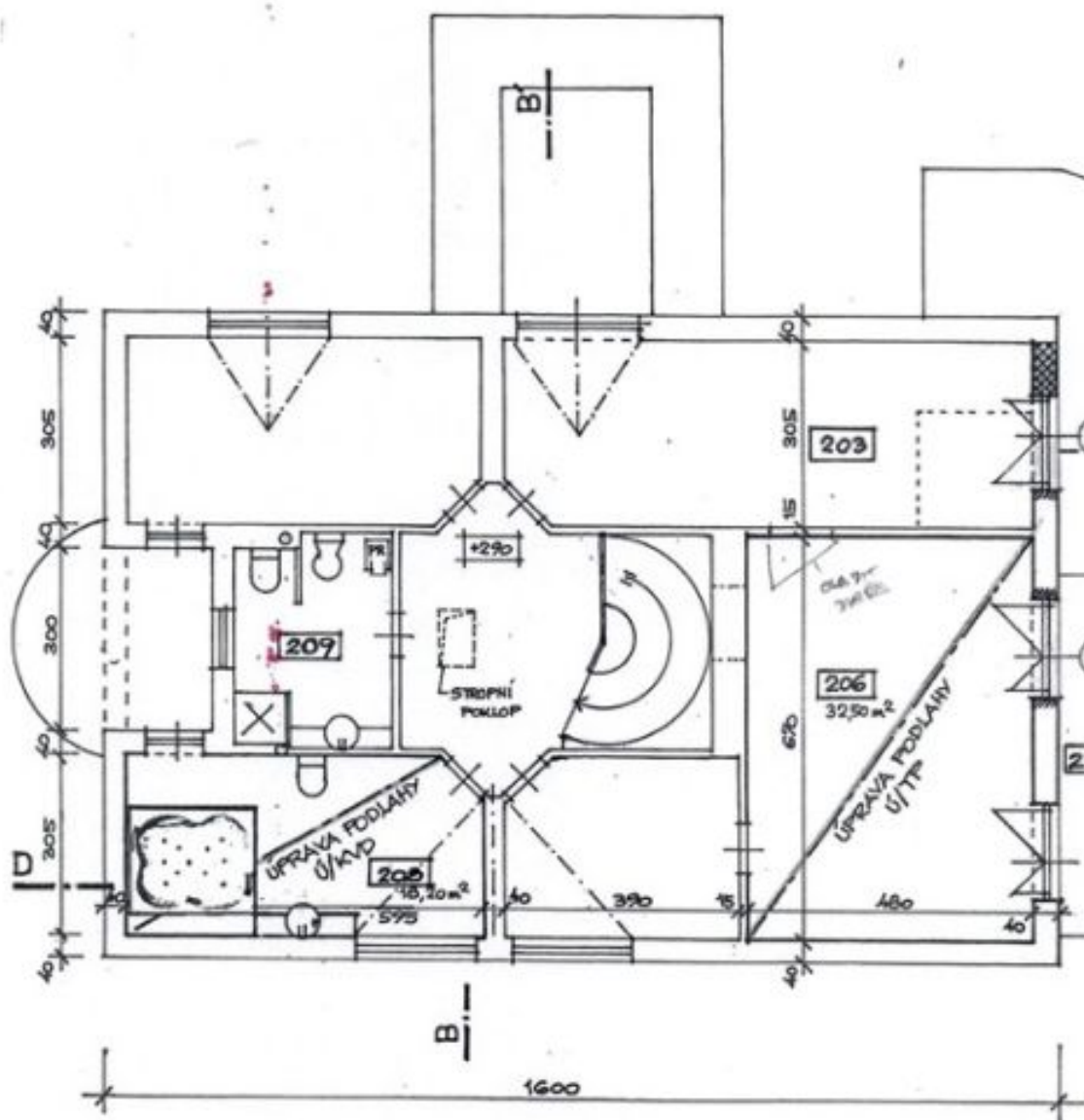


## House Four-bedroom (5+1)

350 m<sup>2</sup>, Praha-západ, Ohrobec

Sold

### Půdorys 2.NP. – podkroví



M 1:100