



## Apartment Two-bedroom (3+kk)

Sold

166 m<sup>2</sup>, Prague 1, Staré Město





## Apartment Two-bedroom (3+kk)

**Sold**166 m<sup>2</sup>, Prague 1, Staré Město

Total area	181 m <sup>2</sup>
Floor area*	166 m <sup>2</sup>
Terrace	14 m <sup>2</sup>
Parking	-
Cellar	Yes
Service price	11 900 CZK monthly
PENB	E
Reference number	103078

\* Size of the unit according to the Housing Act.  
The area consists of the sum total of the internal area of every room.

**Unique offer of a first-class, air-conditioned attic apartment with a terrace overlooking the tower of the Old Town Hall. This designer gem is hidden on the top floor of an elegant Art Nouveau building in an attractive area, on Široká Street between the churches of St. Spirit and U Salvátora and the Spanish Synagogue, in close proximity to Pařížská Street.**

The generous layout of the 5th floor apartment offers a spacious living room with a dining area and adjoining kitchen, a separate bedroom with an en-suite bathroom, a second, open bedroom with its own bathroom and separate toilet, a closet, a guest toilet, and an entrance hall. In the living room is an entrance to the **southeast-facing terrace** towards the **courtyard**.

High-quality facilities include **terrazzo, wood, laminate, and iron surfaces, Bellfires gas fireplace**, lighting by **British design icon Tom Dixon, Gaggenau** (fridge-freezer, wine cooler, induction hob), and **Miele** (washer, dryer, dishwasher) appliances, coffee machine), a Faber pull-out hood, **Tres, Boffi, and Kludi** faucets, an **MDF Italia** dining table, **Kartell** chairs and sofa set, **Bang & Olufsen TV and speaker system, air-conditioning**, security equipment, and a **pergola** on the terrace. The building has elegant common areas and an **elevator**. The apartment includes space in the basement for building a cellar.

A lucrative area in the very heart of Old Town, close to Pařížská Street, Old Town Square, the picturesque winding streets of the Haštalská quarter, and the gardens of the St. Agnes Monastery. The neighborhood is full of quality cafes, restaurants and shops, including the boutiques of global brands and Czech designers. Everything you need is within walking distance, convenient access to other parts of Prague is possible thanks to the nearby metro and tram stations.

Floor area 166.3 m<sup>2</sup>, terrace 14.3 m<sup>2</sup>.

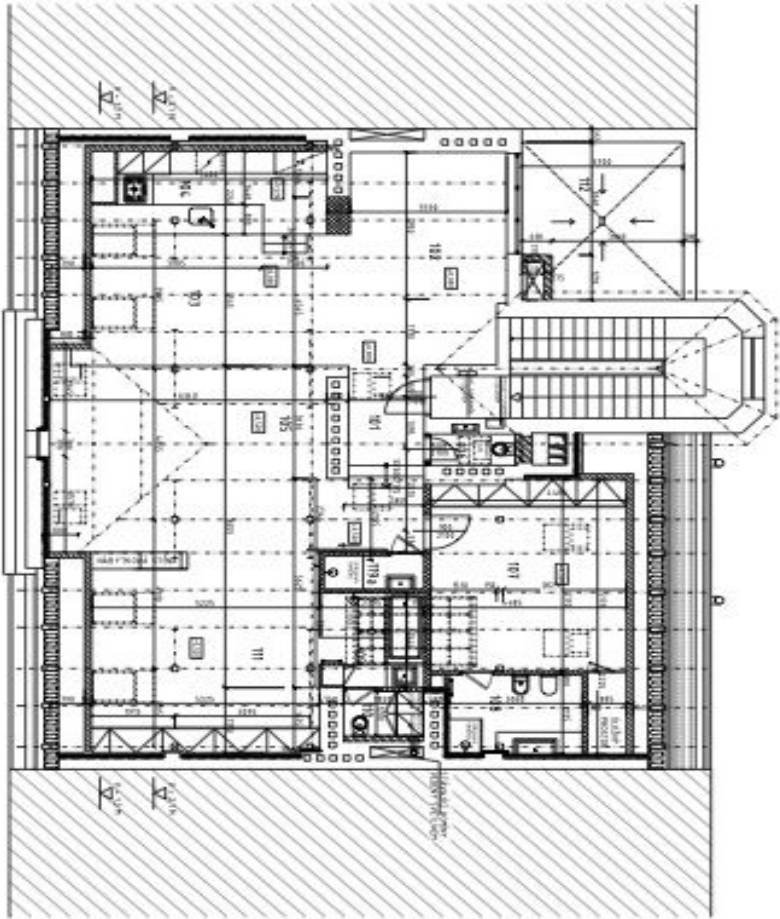




# Apartment Two-bedroom (3+kk)

166 m², Prague 1, Staré Město

Sold



- LEGENDA MATERIÁLŮ
- STAVAJÍCÍ KONSTRUKCE
  - KONSTRUKCE NOVÉ - SÁROKAMPTONOVÉ PRŮVLY
  - KONSTRUKCE NOVÉ - LTVB
  - BEZ KONSTRUKCE STŘEŠNÍHO PLÁŠTĚ
  - SÁROKAMPTONOVÉ PŘEDSTĚNY
  - BEZ KONSTRUKCE - ZATEPLENÍ STAVAJÍCÍCH STĚN

č. m.	název	plocha m <sup>2</sup>	podlaží
101	HALA	112	TERAZO
102	ODYVACÍ POKOJ	22,5	TERAZO
103	KUCHYŇA	19,3	TERAZO
104	KUCHYŇ	11,5	ODĚVŇNÁ KAPITOLYVÁNÁ
105	ODYVACÍ POKOJ	21,3	ODĚVŇNÁ KAPITOLYVÁNÁ
106	WC	1,8	TERAZO
107	LOŽNICE	14,6	ODĚVŇNÁ KAPITOLYVÁNÁ
108	KOPELNA	1,1	KER. OLADŽA
109	KOPELNA	5,0	KER. OLADŽA
109a	KOPELNA	2,0	KER. OLADŽA
110	WC	2,2	KER. OLADŽA
111	LOŽNICE	29,8	ODĚVŇNÁ ŽEPA
112	TERAZO	166,3	TERAZO