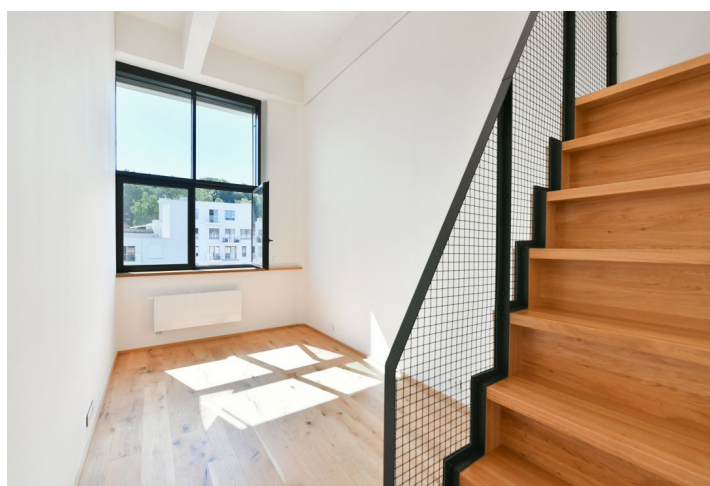
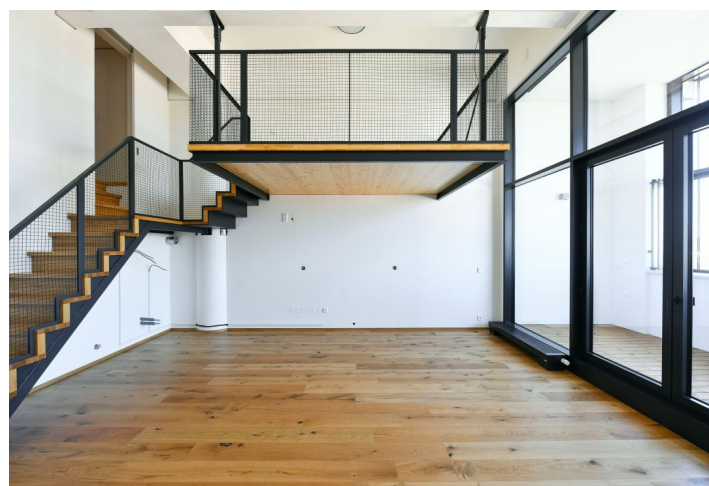
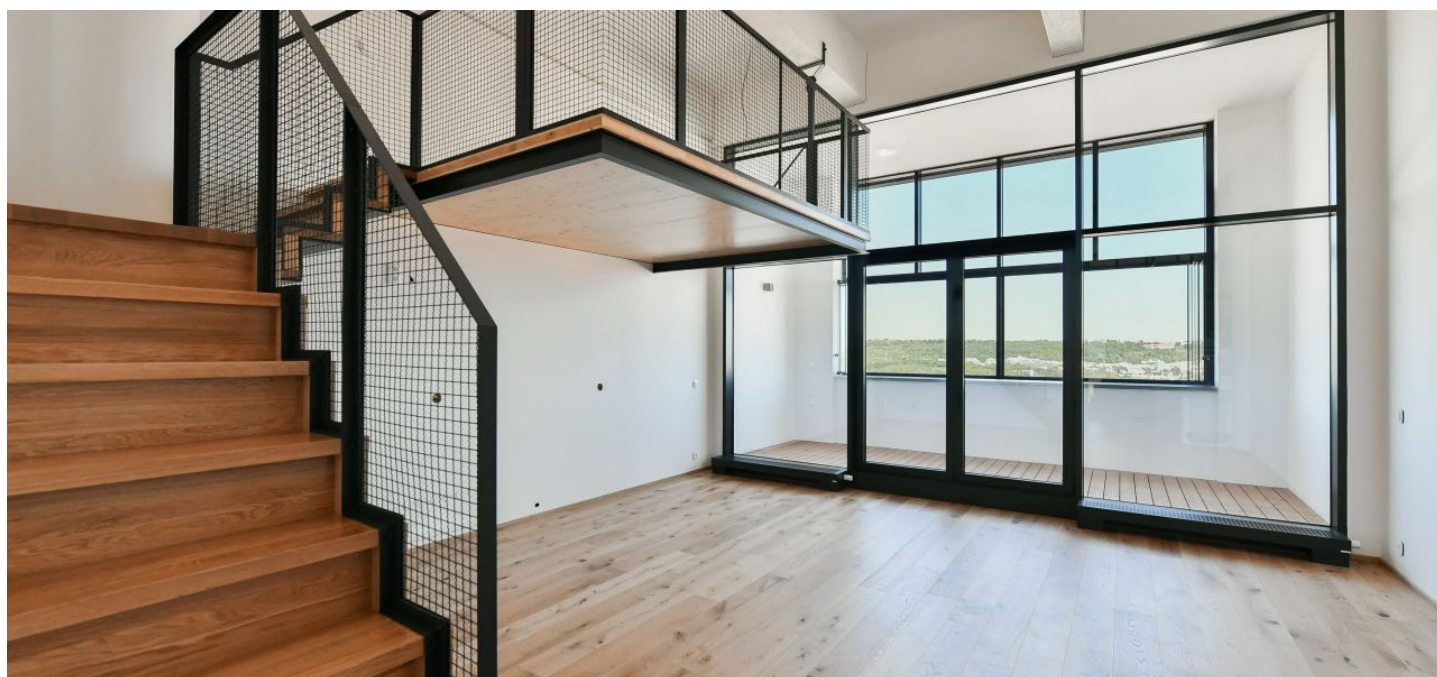




Apartment Two-bedroom (3+kk)

Rented

121.4 m², Prague 5, Košíře, Naskové





Apartment Two-bedroom (3+kk)

Rented

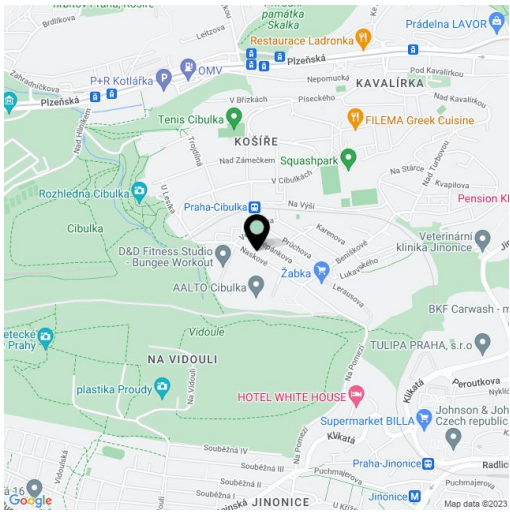
121.4 m², Prague 5, Košíře, Naskové

Total area	131 m²
Floor area*	121 m²
Loggia	10 m²
Parking	Garage parking.
Garage	Yes
Cellar	Yes
Service price	Monthly deposit for service charges, water, and heating CZK 6,000. Electricity is billed separately.
PENB	B
Reference number	102848
Available from	Immediately

This brand new unfurnished 2-bedroom apartment with 3 galleries, an enclosed balcony and beautiful views of Prague is on the 4th floor of the recently built PARVI Cibulka residential project in the site of a former industrial hall. Amenities include a shared reception and a green park in the courtyard. Located on the very edge of the Vidoule nature preserve, near the Cibulka forest park, in a quiet residential area within easy reach of full amenities and services. Close to the Jinonice metro station, Cibulka train station with connections to Anděl and the city center, and within quick reach of the Anděl/Nový Smíchov commercial center. Conveniently located for the German School.

The interior features a living room with a fully fitted open plan kitchen, a gallery and access to the enclosed balcony, 2 bedrooms with galleries and windows facing the courtyard, a bathroom including a bathtub and a toilet, a utility room, a separate toilet with a bidet shower, and an entrance hall with a built-in wardrobe.

Hardwood floors, tiles, security entry door, automatic exterior blinds, central heating, washer, dryer, dishwasher, induction cooktop, American type fridge, microwave oven, video entry phone, cellar, camera system, pram storage, bike wash area in the building. A garage parking space is included.



* Area of the unit according to the Civil Code. The area consists of the sum total area of the entire unit bounded by perimeter walls.