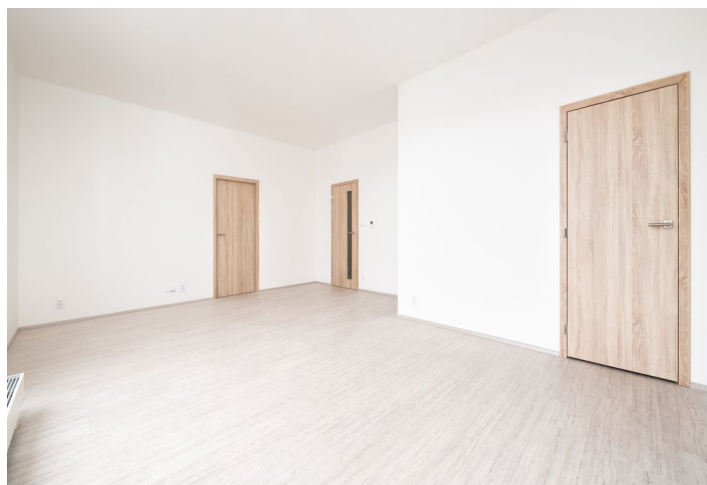




## Apartment Two-bedroom (3+kk)

Rented

85.2 m², Brno-město, Ponava, Sportovní





## Apartment Two-bedroom (3+kk)

Rented

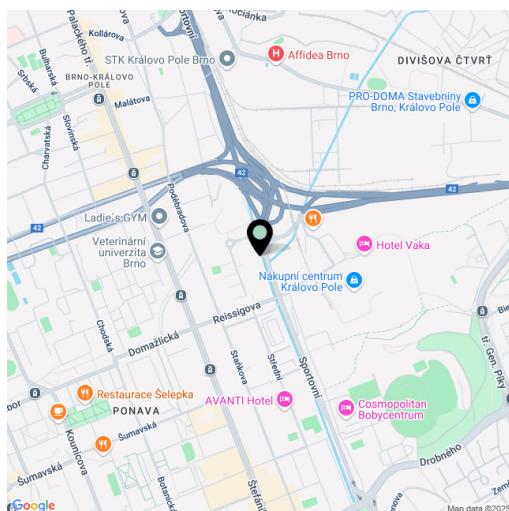
85.2 m², Brno-město, Ponava, Sportovní

|                  |  |
|------------------|--|
| Total area       | 90 m²  |
| Floor area*      | 85 m²  |
| Balcony          | 5 m²   |
| Parking          | Yes  |
| Garage           | Yes  |
| Cellar           | Yes  |
| Service price    | Monthly deposit for common building charges and utilities CZK 6,000. |
| PENB             | B  |
| Reference number | 102800   |
| Available from   | Immediately  |

This is a semi furnished 2-bedroom 2-bathroom apartment with a balcony and parking, on the 7th topmost floor in the brand new Ponava City residence. The building is set in a location with great transportation accessibility, in close vicinity of the Lužánky Park with sports / wellness facilities, within easy reach of the city center and complete amenities, near a supermarket and the Královo Pole shopping mall.

The interior features a living room with a fully fitted open plan kitchen and a pantry, 2 bedrooms, 2 bathrooms - each with a toilet, an entrance hall with storage space, and a **balcony** with beautiful views of the quiet green courtyard.

Oversized windows, **heat recovery ventilation**, built-in wardrobes, floating floors, tiles, security entry door, triple-glazed plastic windows, **cellar**, lift. A **garage parking** space is included. The apartment can be partially furnished.



\* Area of the unit according to the Civil Code. The area consists of the sum total area of the entire unit bounded by perimeter walls.