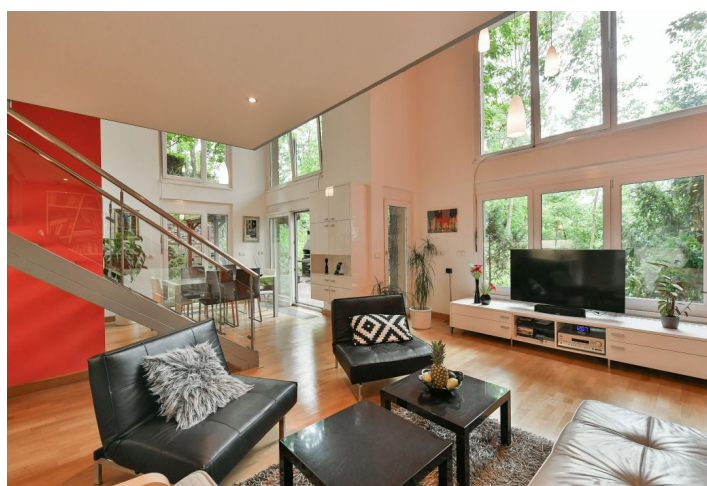
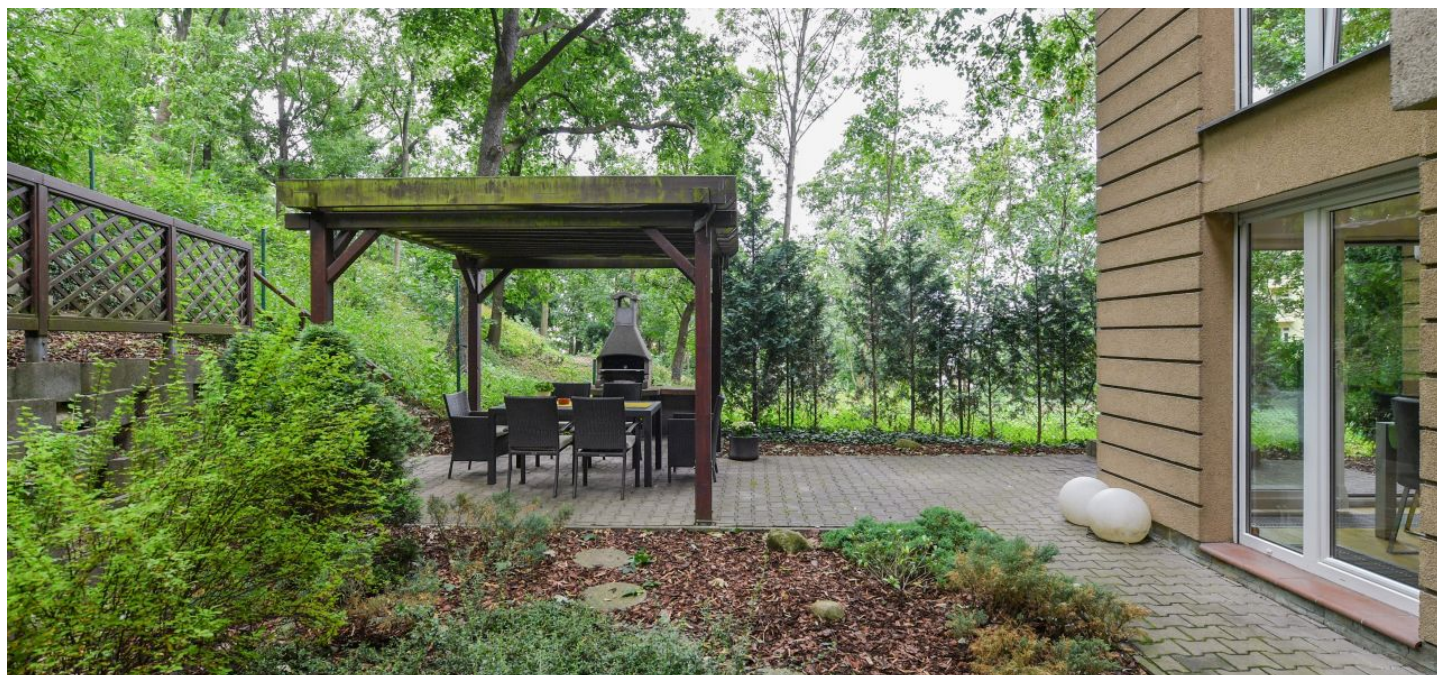




Apartment Three-bedroom (4+kk)

Sold

127 m², Prague 2, Vinohrady, Koperníkova





Apartment Three-bedroom (4+kk)

Sold

127 m², Prague 2, Vinohrady, Koperníkova

Total area	127 m²
Garden	140 m²
Parking	Parking space in a parking system
Garage	Yes
Cellar	Yes
Service price	13 000 CZK monthly
PENB	G
Reference number	102414

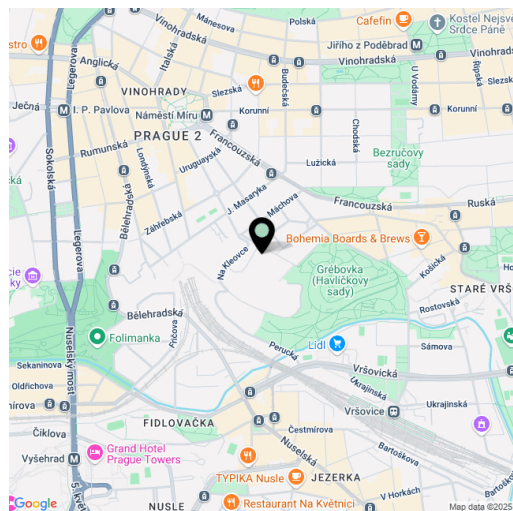
Having your own piece of greenery with absolute privacy is made possible by this spacious duplex apartment with parking facing a private garden, located in a cozy residence in Vinohrady in the immediate vicinity of Grébovka Park.

On the entrance level (1st underground floor) are 2 bedrooms, a bathroom, a landing, and a staircase leading down to the airy living and dining room. From this living space with a **double height ceiling**, **French windows** lead to the garden. There is also a kitchen and a bedroom with an en-suite bathroom.

The residential project with only 8 residential units was completed in 2001. Windows are plastic with interior blinds, interior doors are **veneered**, heating is central from a central gas boiler room. In addition to the **large landscaped garden**, the apartment also includes a **parking space in an automated parking system**.

This completely **unique place** is located on a **southern slope** immediately adjacent to **Grébovka Park** in a romantic English style. Within a short walking distance, there are state and private kindergartens and elementary schools as well as a Lauder kindergarten, elementary school, and high school, a grocery store, several cafes, and restaurants. It takes about 5 minutes to walk to a tram stop, and in 10 minutes you can walk to the Náměstí Míru metro station. It is possible to quickly connect to the highway by car.

Floor area 127 m², garden 140 m².



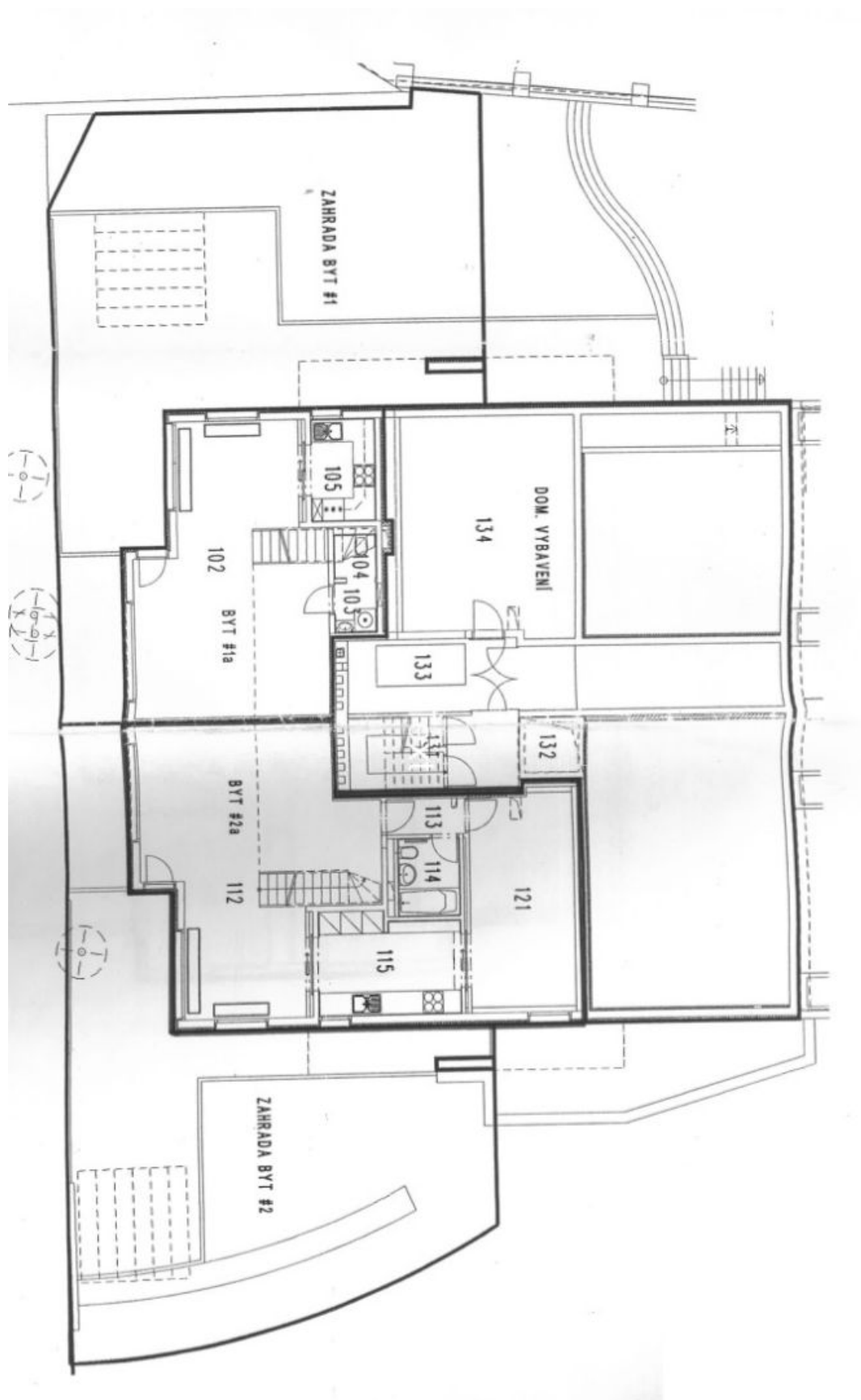
* Size of the unit according to the Housing Act.
The area consists of the sum total of the internal area of every room.



Apartment Three-bedroom (4+kk)

Sold

127 m², Prague 2, Vinohrady, Koperníkova





Apartment Three-bedroom (4+kk)

Sold

127 m², Prague 2, Vinohrady, Koperníkova

