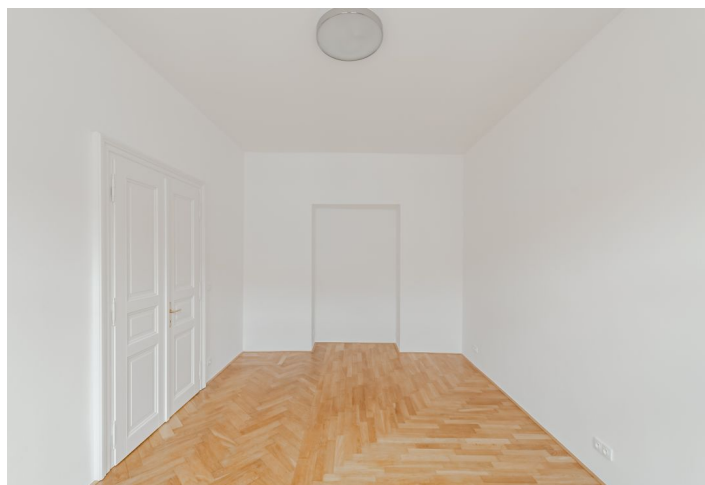
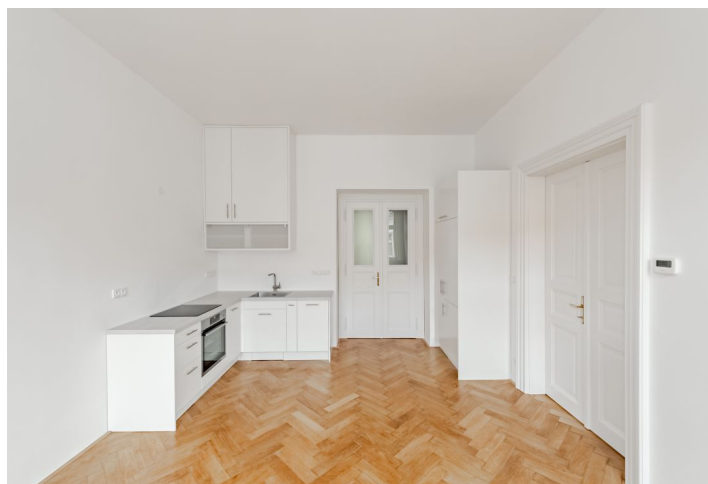




Apartment Two-bedroom (3+kk)

Rented

77.1 m², Prague 2, Vinohrady, Varšavská





Apartment Two-bedroom (3+kk)

Rented

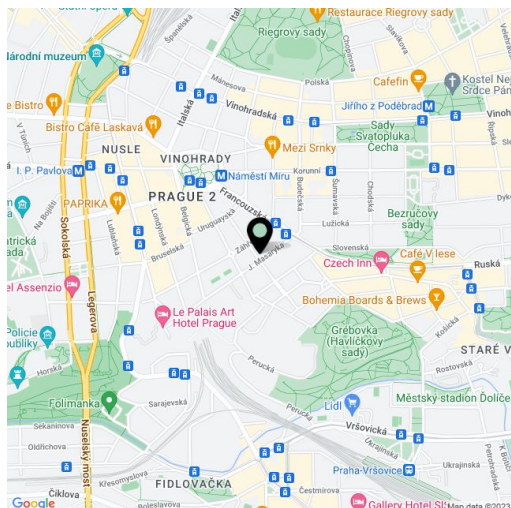
77.1 m², Prague 2, Vinohrady, Varšavská

Total area	77 m²
Parking	Garage parking near by.
Garage	Yes
Cellar	-
Service price	Monthly deposit for services and water: CZK 3,000. Electricity is billed separately.
PENB	C
Reference number	102402
Available from	Immediately

This newly refurbished unfurnished apartment is on the 4th floor of a well-maintained traditional building with an elevator. Wonderfully located on a quiet street in a residential neighborhood of tree-lined streets and parks, sidewalk cafes, restaurants, bars, etc. with a great atmosphere and Havlíčkovy Sady Park just down the street. Situated only a few min. walk from Náměstí Míru Square with a metro station and multiple tram links, only a short walk to the city center.

The interior features a living room with a fully fitted open plan kitchen, 2 bedrooms facing the courtyard (the master bedroom has a built-in wardrobe and an en-suite toilet). There is a bathroom with a walk-in shower, a separate toilet, and an entrance hall.

Hardwood parquet floors, tiles, electric boiler, dishwasher, induction cooktop, audio entry phone, security cameras in the building, **shared balcony** on the mezzanine floor, chip entry to the building. A **garage parking** space is available near by at CZK 4,000/month.



* Area of the unit according to the Civil Code. The area consists of the sum total area of the entire unit bounded by perimeter walls.