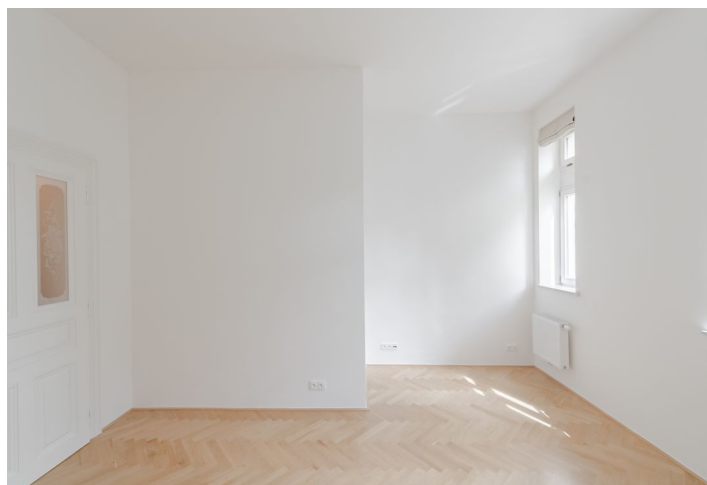
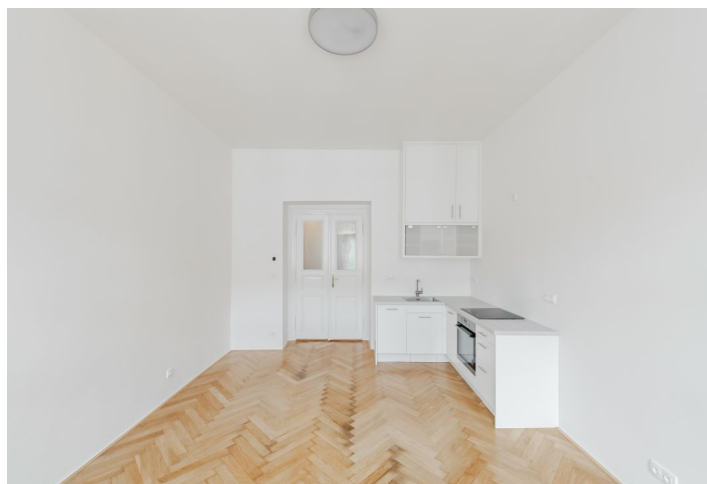




## Apartment One-bedroom (2+kk)

Rented

53.8 m<sup>2</sup>, Prague 2, Vinohrady, Varšavská





## Apartment One-bedroom (2+kk)

**Rented**

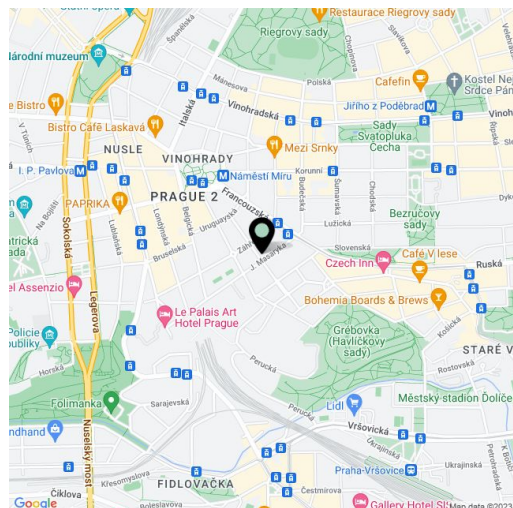
53.8 m², Prague 2, Vinohrady, Varšavská

Total area	54 m²
Parking	Garage parking nearby.
Garage	Yes
Cellar	-
Service price	Monthly deposit for services and water: CZK 2,200. Gas and electricity are billed separately.
PENB	C
Reference number	102401
Available from	Immediately

This newly refurbished unfurnished apartment is on the 4th floor of a well-maintained traditional building with an elevator. Wonderfully located on a quiet street in a residential neighborhood of tree-lined streets and parks, sidewalk cafes, restaurants, bars, etc. with a great atmosphere and Havlíčkovy Sady Park just down the street. Situated only a few min. walk from Náměstí Míru Square with a metro station and multiple tram links, only a short walk to the city center.

The interior features a living room with a fully fitted open plan kitchen, a bedroom facing the courtyard, a bathroom with a walk-in shower, a separate toilet, and an entrance hall.

**Hardwood parquet floors**, tiles, built-in wardrobe in the bedroom, gas boiler, dishwasher, induction cooktop, audio entry phone, security cameras in the building, **shared balcony** on the mezzanine floor, chip entry to the building. A **garage parking** space is available nearby at CZK 4,000/month.



\* Area of the unit according to the Civil Code. The area consists of the sum total area of the entire unit bounded by perimeter walls.