



Apartment Three-bedroom (4+kk)

Sold

95 m², Prague 9, Letňany, Hlučková

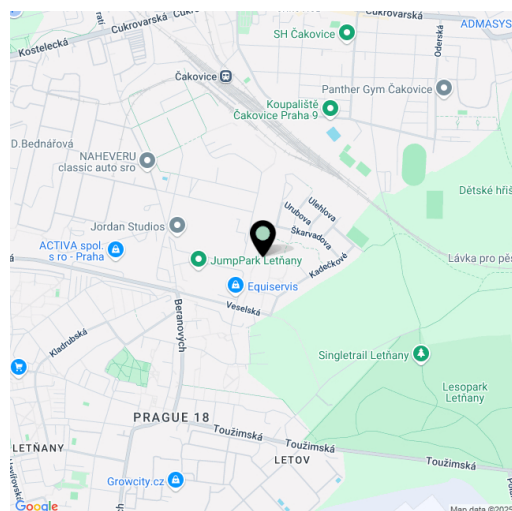




Apartment Three-bedroom (4+kk)

Sold95 m², Prague 9, Letňany, Hlučková

Total area	175 m ²
Floor area*	95 m ²
Balcony	6 m ²
Terrace	74 m ²
Parking	Lockable garage
Garage	Yes
Cellar	5 m ²
PENB	B
Reference number	102398



* Area of the unit according to the Civil Code. The area consists of the sum total area of the entire unit bounded by perimeter walls.

This modern apartment with a balcony and an over 70-meter sunny terrace is located on the top floor of an energy-efficient building on a quiet cul-de-sac in Letňany, close to forest parks and a shopping center. A lockable garage is included in the price.

The layout of the 3rd floor apartment consists of a living room with an open plan kitchen and dining room, a master bedroom with an en-suite bathroom (shower, toilet, sink), another 2 bedrooms, a central bathroom (bathtub, 2 sinks, toilet, and niche for a washing machine and dryer), and a foyer with a corridor. The living room has access to the **balcony** and **terrace**, which can also be accessed from the two bedrooms/children's rooms.

The apartment building was approved in 2018. The offered apartment is equipped to a **higher standard**, including high-quality vinyl floors and brand-name floor and wall tiles in the bathrooms. The windows are plastic with exterior **electrically controlled aluminum blinds** and interior **textile blinds**, and the terrace can be shaded with an awning. The custom-made kitchen has a **Technistone** artificial stone worktop and an **induction hob** with an **integrated hood**, and other built-in furniture is also custom-made. The living room and 1 bedroom have **air-conditioning**, the heating is central remote, and the apartment is guarded by a **security system**. The purchase price includes a **lockable garage** and **cellar**, both accessible by **elevator**.

There is a grocery store or restaurant right in the residential complex, as well as a children's playground, and a kindergarten is a few steps from the building. A full range of civic amenities, including schools and **sports fields**, are within a short walking or driving distance. It is possible to walk to **Havraňák forest park** or **Letňany forest park**, both green areas that are interspersed with **paths** for **pedestrians and cyclists**. In a short time, you can reach the **Čakovice swimming pool** by bike. The Letňany metro station is 5 minutes away by bus, and the nearby Liberecká and Kbelská streets and access to the D8 or D10 highway or the Prague Ring Road make traveling by car easier.

Floor area 94.7 m², terrace 73.5 m², balcony 6.3 m², cellar 4.9 m².



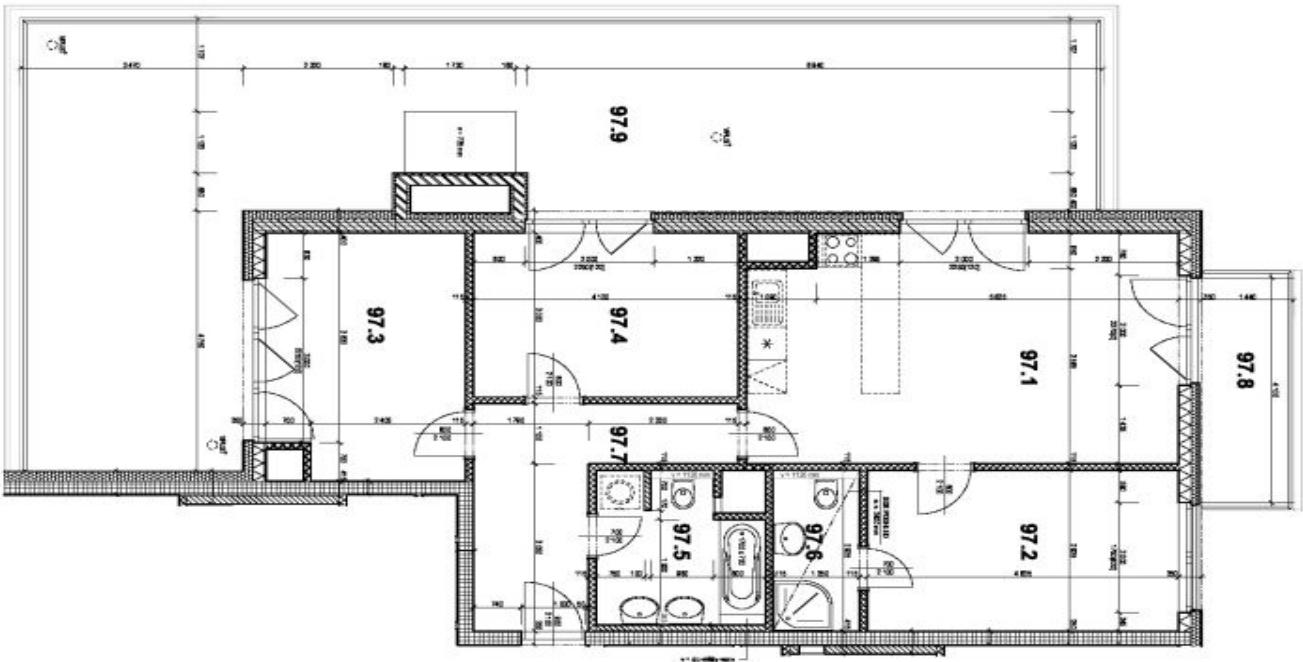
Apartment Three-bedroom (4+kk)

95 m², Prague 9, Letňany, Hlučková

Sold

PRÍLOHA 2

M 1:75



STUPEŇ:		MĚRITKO:	
OBCHODNÍ SLOŽKA 1		1:75	
VÝREŠ:		CENTRAL GROUP	
PŮDORYS			
MÍSTO STAVBY:		FORMLAT:	PODLAŽÍ:
PRAHA 9 - LETŇANY		A3	5.NP
LOKALITA:		BYTOVÝ DŮLH:	BYT Č.:
LETŇANSKÉ ZAHRADY		K	97

POZNÁMKA:

- STĚNY A PRŮČKY KOTOVÁNY NA VÝROBNÍ ROZMĚRY HLUBŠÍ STAVBY BEZ OMIKTER

- UŽITNÉ PLOCHY MÍSTNOSTI PŘEPočTENY NA STAVNO PROVOZENÍ OMKTER

- VÝŠKA PŘÍZDÍVKY BUDĚ PŘÍSLUŠENÁ DLE OBKLADOVÉHO OMKTER

- KOUPELNA NEBO WC TAK, ABY POKUD MOŽNO VYCHÁZEJ MINIMÁLNÍ DOPRŮZ

- OBKLADÁČKY Cca 50 mm POD NEBO NAD PŘÍZDÍVKOU



- LEGENDA MATERIÁLŮ:**
- ZZZZZZZZZZ ZDĚLOVÉ KONSTRUKCE, TL DLE VÝKRESU
 - XXXX KERAAMICKÉ ZDVO AKUSTICKÉ, TL 100 mm
 - XXXX KERAAMICKÉ NOSNÉ ZDVO AKUSTICKÉ, TL 250 mm
 - XXXX KERAAMICKÉ NOSNÉ ZDVO, TL 240 mm
 - XXXX KERAAMICKÉ NOSNÉ ZDVO AKUSTICKÉ, TL 100 mm
 - XXXX KERAAMICKÉ ZDVO AKUSTICKÉ, TL 250 mm
 - XXXX KERAAMICKÉ ZDVO, TL 175 mm
 - XXXX KERAAMICKÉ PRŮČKY AKUSTICKÉ, TL 115 mm
 - XXXX KERAAMICKÉ PRŮČKY, TL 115 mm
 - ZZZZZZZZZZ PLYNOSOLUKAČNÉ PŘÍZDÍVKY, TL 100, 150 mm
 - ===== PLYNOSOLUKAČNÉ PŘÍZDÍVKY, TL 100, 150 mm
 - ===== VÝŠKA DLE VÝKRESU
 - ===== TEPELNÁ IZOLACE, TL DLE VÝKRESU
 - ===== TEPELNÁ IZOLACE, TL DLE VÝKRESU

TABULKA PLOCH:

ČÍSLO MÍSTN.	NÁZEV MÍSTNOSTI	PLOCHA (m ²)
97.1	OBYVACÍ POKOJ + KK	27,9
97.2	POKOJ	14,0
97.3	POKOJ	13,7
97.4	POKOJ	12,5
97.5	KOUPELNA + WC	6,3
97.6	KOUPELNA + WC	3,7
97.7	PŘEDSÍŇ	10,1
97.8	BALKON	6,3
97.9	TERASA	73,5
ÚŽITNÁ PLOCHA		88,2
BALKON		6,3
TERASA		73,5

Celková podlahová plocha bytu, vypočtená dle platných právních předpisů (včetně výšky č. 386/2013 Sb.), činí 94,7 m²